



Park and Recreation Board Agenda
City Council Chambers, City Hall, 612 N. Main Street
April 10, 2025

1. 6:00 PM Call to Order

2. Citizen's Input

If you need to address the board on an item that was not on the agenda, excluding personnel items, please come forward to the podium and state your name and your concern. Presentations are limited to three minutes. Items will be considered but no action will be taken at this time.

3. Delegations

4. Additions or Deletions/Approval

5. Approval of Minutes

6. Approval of Financial Reports

7. Department Reports

8. Approval of Placement of Kiwanis Club Storywalk in Patton Young Park

The Mitchell Kiwanis Club has offered to donate the amount needed to purchase the storyboards, provided that the Parks Department will pay the expenses related to installation (labor, concrete, concrete forms, grass seed, etc.).

9. Approval of 2025 Lake Mitchell Campground Pontoon Rental Rates

10. Review of Park Shelter Rates

Board members are considering an adjustment of park shelter rental rates. Current rates are as follows:

Non-enclosed shelter: \$55.00/day plus sales tax = \$58.58

Enclosed shelter: \$110.00/day plus sales tax = \$117.15

Times are 9:00a.m. to 11:00p.m.

11. Discussion on Possible Re-Configure of Ice Arena Boys' Locker Rooms

Proposal by Mitchell Hockey to Re-Configure Boys' Locker Rooms at Arena

12. Discussion Regarding Timing for Creating a New Parks, Recreation, and Trails Master Plan

13. Set Next Meeting Date

14. Adjournment

Individuals with disabilities who require special assistance to take part in this meeting may contact one of the following at City Hall (605) 995-8420 at least 24 hours prior to the meeting with requests for assistance: Human Resources Officer or the City Administrator.

**Parks & Recreation Board Meeting Minutes
City Council Chambers, City Hall, 612 N. Main Street
March 11, 2025**

1. Call to Order

Meeting was called to order by Andy Jerke, President of the Board, at 6:00 PM

Present: Andy Jerke, Shaun Davis, Dennis Thompson, Luke Norden, Bryce Berletic, and Adam Schulz

Absent: Pat Skinner and council liaison Dan Sabers

Staff Present: Kevin Nelson, Kevin DeVries, Jeremy Nielsen, and Steve Roth

Others Present: Cliff Jaeger

2. Swearing in of New Park Board Appointee Bryce Berletic: Nelson had Bryce recite the oath.

3. Citizen's Input: Cliff Jaeger, who spoke and expressed opposition to the proposed policy for Use of Metal Detectors within Mitchell's parks.

4. Delegations: None

5. Additions or Deletions to Agenda: None

Motion by Norden and seconded by Davis to approve the agenda. Motion carried.

6. Minutes

Minutes of the February 13, 2025 regular meeting were reviewed. Motion by Jerke and seconded by Norden to approve as reviewed. Motion carried.

7. Approve Financial Reports

February financial were reviewed. Motion by Norden and seconded by Schulz to approve the Bills and Financial Reports as submitted. Motion carried.

8. Department Reports

Department managerial staff provided brief overviews of their written reports.

9. Approve Proposed Policy Regarding the Use of Metal Detectors in Parks

Nelson overviewed the proposed policy that had had discussed by the board at the February board meeting, as follows: *The use of metal detectors is allowed on parks properties. However, disturbing the soil in any manner for the purpose of extracting items from below the surface, be it via fingers, hands, feet, spoons, forks, hand-trowels, shovels, or any other implement or device, is not permitted.* A motion was made by Schulz to approve the proposed policy, and it was seconded by Davis. Motion carried.

10. Review Progress Toward Budgeting and Priorities Listed in the Parks and Recreation 2017 Master Plan

Nelson made reference to a document which was created in the 2017 Parks and Recreation Master Plan for Mitchell, and he highlighted the areas and equipment which the city had been able to address to date, noting that a lot of great ideas were presented in terms and facilities and equipment needs and wants but that ultimately, based upon the financial resources available, items on the list were prioritized on an annual basis. Discussion ensued. It was asked if it might be time for the board to consider developing another parks master plan. Nelson indicated that he would check administrative thoughts on such.

Outside expectations

City of Mitchell

612 North Main Street | Mitchell, SD 57301

Phone: 605-995-8143

CityOfMitchell.org



11. Parks Department Annual Report for 2024

Nelson overviewed the document.

12. Set Next Meeting Date

The board agreed that the next park board meeting date would be April 10 at 6:00p.m.

13. Adjournment

There being no further business, the board meeting adjourned at 6:43 PM.

PACKET : 07266 07267 07268

VENDOR SET: Mult

FUND : 619 CAMPGROUND

DEPARTMENT: 5220 CAMPGROUND

BANK: Multi

BUDGET TO USE: CB-CURRENT BUDGET

VENDOR	NAME	ITEM #	G/L ACCOUNT NAME	DESCRIPTION	CHECK#	AMOUNT
01-00445	CITY OF MITCHELL					
		I-04.002601.00.03.25	619-45220-42800	UTILITIES 2601 N MAIN ST-CMPGRND	205913	47.40
		I-04.002602.00.03.25	619-45220-42800	UTILITIES 2601 N MAIN ST-CAMPSITES	205913	84.25
01-01830	NORFESTERN ENERGY					
		I-3394102-2.02.25	619-45220-42800	UTILITIES 2601 N MAIN ST	205998	594.62
		I-3988458-0.02.25	619-45220-42800	UTILITIES 2601 N MAIN ST SHWR	205998	12.00
01-06750	MITCHELL TELECOM					
		I-11085200	619-45220-42800	UTILITIES ACCT #00028238-4	205991	72.95
01-08487	YAMAHA GOLF & UTILITY					
		I-01-308767	619-45220-43400	EQUIPMENT YAMAHA GOLF CART	206060	9,949.00
		I-01-308770	619-45220-42500	REPAIR & MAIN UMAX S/T ASSY	206060	475.00
DEPARTMENT 5220 CAMPGROUND					TOTAL:	11,235.22
FUND 619 CAMPGROUND					TOTAL:	11,235.22

PACKET: 07282 CREDIT CARDS 03.24.2025

VENDOR SET: 01

FUND : 619 CAMPGROUND

DEPARTMENT: 5220 CAMPGROUND

BANK: APBNK

BUDGET TO USE: CB-CURRENT BUDGET

VENDOR	NAME	ITEM #	G/L ACCOUNT NAME	DESCRIPTION	CHECK#	AMOUNT
01-07141	FIRST NATIONAL BANK OMA					
		I-03102025.7022	619-45220-42620	COMPUTER SOFT FEB 2025 PAYPAL MONTHLY FEES	206080	33.40
		I-03102025.7022	619-45220-42620	COMPUTER SOFT FEB 2025 RESERVATION FEES	206080	128.16
			DEPARTMENT 5220	CAMPGROUND	TOTAL:	161.56
			FUND	619 CAMPGROUND	TOTAL:	161.56

PACKET : 07287 07288 07289

VENDOR SET: Mult

FUND : 619 CAMPGROUND

DEPARTMENT: 5220 CAMPGROUND

BANK: Multi

BUDGET TO USE: CB-CURRENT BUDGET

VENDOR	NAME	ITEM #	G/L ACCOUNT NAME	DESCRIPTION	CHECK#	AMOUNT
01-00469	GEOTEK ENGINEERING & TE					
		I-2023-33 P.E. #1	619-45220-43200	BUILDINGS 2023-33 P.E. #1	206178	3,750.00
01-01802	L.L. JIRSA, ARCHITECT					
		I-2023-33 P.E. #2	619-45220-43200	BUILDINGS 2023-33 P.E. #2	206217	9,618.00
01-03488	FLOWBIRD AMERICA INC					
		I-AI001684	619-45220-42620	COMPUTER SOFT ALARM MONITORING	206171	69.00
01-08594	MAKE IT MINE DESIGNS					
		I-40119	619-45220-42600	SUPPLIES BROWN VINYL, REFLECTIVE SIGN	206227	30.00
DEPARTMENT 5220 CAMPGROUND					TOTAL:	13,467.00
FUND 619 CAMPGROUND					TOTAL:	13,467.00

PACKET : 07266 07267 07268

VENDOR SET: Mgt

FUND : 201 PARK FUND

DEPARTMENT: 5110 RECREATION & AQUATICS

BANK: Multi

BUDGET TO USE: CB-CURRENT BUDGET

VENDOR	NAME	ITEM #	G/L ACCOUNT NAME	DESCRIPTION	CHECK#	AMOUNT
01-00445	CITY OF MITCHELL					
		I-04.000950.00.03.25	201-45110-42850	UTILITIES-AQU HITCHCOCK POOL	205913	16.75
	PROJ: J50-WATER		OUTDOOR AQUATIC CENTER	UTILITIES-WATER		
01-06750	MITCHELL TELECOM					
		I-11083320	201-45110-42800	UTILITIES ACCT #00223662-2	205991	2.75
DEPARTMENT 5110 RECREATION & AQUATICS					TOTAL:	19.50

PACKET : 07266 07267 07268

VENDOR SET: Mult

FUND : 201 PARK FUND

DEPARTMENT: 5140 RECREATION CENTER

BANK: Multi

BUDGET TO USE: CB-CURRENT BUDGET

VENDOR	NAME	ITEM #	G/L ACCOUNT NAME	DESCRIPTION	CHECK#	AMOUNT
01-00008	ELFSTRAND'S ACE HARDWAR					
		C-2231	201-45140-42600	SUPPLIES & MA RETURNED FASTENERS	205940	6.28-
	PROJ: J06-SM-GENER	REC CTR-GENERAL BLDG		SUPPLIES/MATERIAL-GENERAL		
01-00356	QUALIFIED PRESORT SERVI					
		I-2279-1233	201-45140-42600	SUPPLIES & MA POSTAGE 02.16-28.2025	206018	0.73
01-00445	CITY OF MITCHELL					
		I-04.001300.00.03.25	201-45140-42800	UTILITIES 1300 N MAIN ST	205913	3,891.15
	PROJ: J09-WATER	REC CTR UTILITIES		UTILITIES-WATER		
01-00520	HAWKINS INC					
		I-6984069	201-45140-42602	CHEMICALS DELDRUM, HYDROCELORIC ACID	205952	4,150.98
	PROJ: J02-CHEMICAL	INDOOR AQUATIC CTR		CHEMICALS		
01-01410	MITCHELL SCHOOL DISTRIC					
		I-2701763-1.02.25	201-45140-42800	UTILITIES 1301 N KIMBALL ST-CITY SHARE	205990	1,864.45
	PROJ: J09-ELE/GAS	REC CTR UTILITIES		UTILITIES-ELECTRIC/GAS		
01-01497	GRAINGER					
		I-9397046005	201-45140-42600	SUPPLIES & MA BATTERY, NAPKIN BAGS	205950	100.83
	PROJ: J06-SM-JANIT	REC CTR-GENERAL BLDG		SUPPLIES/MATERIAL-JANITORIAL		
		I-9418734506	201-45140-42600	SUPPLIES & MA CHEMICAL RESISTANT GLOVES	205950	31.60
	PROJ: J06-SM-JANIT	REC CTR-GENERAL BLDG		SUPPLIES/MATERIAL-JANITORIAL		
		I-9420100936	201-45140-42600	SUPPLIES & MA HOT SURFACE IGNITOR	205950	126.06
	PROJ: J06-SM-ELEC	REC CTR-GENERAL BLDG		SUPPLIES/MATERIAL-ELECTRICAL		
01-01830	NORTHWESTERN ENERGY					
		I-2580493-1.02.25	201-45140-42800	UTILITIES 1300 N MAIN	205998	3,592.58
	PROJ: J09-ELE/GAS	REC CTR UTILITIES		UTILITIES-ELECTRIC/GAS		
		I-2773861-6.03.25	201-45140-42800	UTILITIES 1300 N MAIN ST UNIT 15	205998	6,937.09
	PROJ: J09-ELE/GAS	REC CTR UTILITIES		UTILITIES-ELECTRIC/GAS		
01-01964	DAKOTA SUPPLY GROUP					
		I-S104429139.001	201-45140-42600	SUPPLIES & MA STRAP, RACO BX STL	205930	21.63
	PROJ: J06-SM-GENER	REC CTR-GENERAL BLDG		SUPPLIES/MATERIAL-GENERAL		
		I-S104438731.001	201-45140-42600	SUPPLIES & MA PVC FIT	205930	28.68
	PROJ: J06-SM-GENER	REC CTR-GENERAL BLDG		SUPPLIES/MATERIAL-GENERAL		
		I-S104438731.002	201-45140-42600	SUPPLIES & MA COUPLING	205930	28.68
	PROJ: J06-SM-GENER	REC CTR-GENERAL BLDG		SUPPLIES/MATERIAL-GENERAL		
01-02567	S & M PRINTING INC					
		I-83915	201-45140-42600	SUPPLIES & MA BE HEART SMART CARDS	206026	112.00
	PROJ: J06-SM-GENER	REC CTR-GENERAL BLDG		SUPPLIES/MATERIAL-GENERAL		
		I-83985	201-45140-42600	SUPPLIES & MA APRIL COLLECTIVE FLYERS	206026	24.50
	PROJ: J06-SM-GENER	REC CTR-GENERAL BLDG		SUPPLIES/MATERIAL-GENERAL		
01-02602	PUBLIC HEALTH LABORATOR					
		I-10620027	201-45140-42602	CHEMICALS LAB TESTINGS	206017	90.00
	PROJ: J02-CHEMICAL	INDOOR AQUATIC CTR		CHEMICALS		

PACKET : 07266 07267 07268

VENDOR SET: Mult

FUND : 201 PARK FUND

DEPARTMENT: 5140 RECREATION CENTER

BANK: Multi

BUDGET TO USE: CB-CURRENT BUDGET

VENDOR	NAME	ITEM #	G/L ACCOUNT NAME	DESCRIPTION	CHECK#	AMOUNT
01-02880	TECNE TRUE VALUE & APPL					
		I-A589951	201-45140-42600	SUPPLIES & MA TILEX,STEM KEY	206047	17.48
	PROJ: J06-SM-GENER	REC CTR-GENERAL BLDG		SUPPLIES/MATERIAL-GENERAL		
		I-A590064	201-45140-42600	SUPPLIES & MA PADLOCK	206047	19.99
	PROJ: J06-SM-GENER	REC CTR-GENERAL BLDG		SUPPLIES/MATERIAL-GENERAL		
01-02995	G & R CONTROLS, INC					
		I-149596	201-45140-42500	REPAIR & MAIN MOTOR, BEARING ASSEMBLY	205946	1,637.42
	PROJ: J06-RM-HVAC	REC CTR-GENERAL BLDG		REPAIR/MAINT-HVAC		
		I-149641	201-45140-42500	REPAIR & MAIN TWO PULSE BOILER MAINTENANCE	205946	2,063.21
	PROJ: J06-RM-HVAC	REC CTR-GENERAL BLDG		REPAIR/MAINT-HVAC		
01-03267	WALMART/CAPITAL ONE					
		I-8775.03042025	201-45140-42601	CONCESSION SU BUBBLRS,MOUSE	206059	100.50
	PROJ: J05-CONC SUP	REC CTR CONCESSIONS		CONCESSION SUPPLY		
01-04293	JCL SOLUTIONS					
		I-2000220	201-45140-42600	SUPPLIES & MA CLEANERS,ICE MELT	205963	265.32
	PROJ: J06-SM-JANIT	REC CTR-GENERAL BLDG		SUPPLIES/MATERIAL-JANITORIAL		
01-06750	MITCHELL TELECOM					
		I-11085897	201-45140-42800	UTILITIES ACCT #00037690-1	205991	111.80
	PROJ: J09-TV	REC CTR UTILITIES		UTILITIES-TV		
01-07414	CINDY GERLACH					
		I-1	201-45140-42600	SUPPLIES & MA FOOD PANTRY HOURS	205949	450.00
	PROJ: J06-SM-GENER	REC CTR-GENERAL BLDG		SUPPLIES/MATERIAL-GENERAL		
01-07716	SAGA COMMUNICATIONS OF					
		I-MC-12502109794	201-45140-42300	PUBLISHING ADVERTISING	206027	729.00
	PROJ: J08-KMIT	REC CTR PUBLISHING		PUBLISHING-KMIT		
		I-MC-12502110028	201-45140-42300	PUBLISHING SILVER SNEAKERS ADVERTISING	206027	90.00
	PROJ: J08-KMIT	REC CTR PUBLISHING		PUBLISHING-KMIT		
01-08594	MAKE IT MINE DESIGNS					
		I-39543	201-45140-42650	UNIFORMS C CRANNY LOGOD SWEATSHIRT	205976	94.30
	PROJ: J10-CHRIS	REC CTR UNIFORMS		UNIFORMS-CHRIS		
01-09143	ICAN INC					
		I-123591	201-45140-42300	PUBLISHING ADVERTISING	205957	750.00
	PROJ: J08-ICAN	REC CTR PUBLISHING		PUBLISHING-ICAN		
01-09494	SANFORD HEALTH MITCHELL					
		I-130	201-45140-42600	SUPPLIES & MA MAR 2025 COMMUNITY EVENTS	206028	110.00
	PROJ: J06-SM-GENER	REC CTR-GENERAL BLDG		SUPPLIES/MATERIAL-GENERAL		
01-09633	STAPLES					
		I-6025073652	201-45140-42600	SUPPLIES & MA LINERS,TOWELS,CLEANERS	206039	442.31
	PROJ: J06-SM-JANIT	REC CTR-GENERAL BLDG		SUPPLIES/MATERIAL-JANITORIAL		

PACKET : 07266 07267 07268

VENDOR SET: Mlt

FUND : 201 PARK FUND

DEPARTMENT: 5140 RECREATION CENTER

BANK: Multi

BUDGET TO USE: CB-CURRENT BUDGET

VENDOR	NAME	ITEM #	G/L ACCOUNT NAME	DESCRIPTION	CHECK#	AMOUNT
01-09633	STAPLES			continued		
		I-6025917206	201-45140-42600	SUPPLIES & MA FOAM SKIN CLEANER	206039	49.26
	PROJ: J06-SM-JANIT		REC CTR-GENERAL BLDG	SUPPLIES/MATERIAL-JANITORIAL		
DEPARTMENT 5140 RECREATION CENTER					TOTAL:	27,925.27

PACKET : 07266 07267 07268

VENDOR SET: Mult

FUND : 201 PARK FUND

DEPARTMENT: 5160 SPORTS COMPLEXES

BANK: Multi

BUDGET TO USE: CB-CURRENT BUDGET

VENDOR	NAME	ITEM #	G/L ACCOUNT NAME	DESCRIPTION	CHECK#	AMOUNT
01-0008	ELFSTRAND'S ACE HARDWAR					
		I-2219	201-45160-42600	SUPPLIES & MA RETAIN RING, SHARPIES	205940	10.37
	PROJ: H13-42600		ARENA-SOUTH RINK	SUPPLIES-MAINTENANCE		
		I-2229	201-45160-42600	SUPPLIES & MA MISC FASTENERS	205940	7.78
	PROJ: H13-42600		ARENA-SOUTH RINK	SUPPLIES-MAINTENANCE		
01-00428	CARQUEST AUTO PARTS INC					
		I-4977-330057	201-45160-42600	SUPPLIES & MA GEAR OIL	205906	24.98
	PROJ: H01-42600		SPORTS COMPLEX EQUIPMENT	SUPPLIES/MAINTENANCE		
01-00436	CES FARMERS ALLIANCE					
		I-IG3911	201-45160-42610	GAS & FUEL HOCKEY PROPANE BOTTLE FILL	205911	26.00
	PROJ: H01-42610		SPORTS COMPLEX EQUIPMENT	GAS-FUEL		
		I-IG3970	201-45160-42610	GAS & FUEL HOCKEY PROPANE BOTTLE FILL	205911	78.00
	PROJ: H01-42610		SPORTS COMPLEX EQUIPMENT	GAS-FUEL		
01-00445	CITY OF MITCHELL					
		I-04.000300.00.03.25	201-45160-42800	UTILITIES CADWELL PARK BTHRM	205913	84.25
	PROJ: H04-42800		BASEBALL	UTILITIES		
		I-04.001000.00.03.25	201-45160-42800	UTILITIES 1001 N MINNESOTA ST	205913	143.00
	PROJ: H06-42800		ARENA-NORTH RINK	UTILITIES		
		I-04.001001.00.03.25	201-45160-42800	UTILITIES ICE ARENA-SOUTH BLDG	205913	2,704.40
	PROJ: H13-42800		ARENA-SOUTH RINK	UTILITIES		
		I-04.001150.00.03.25	201-45160-42800	UTILITIES 5951 AIRPORT RD	205913	47.40
	PROJ: H07-42800		PEPSI COMPLEX	UTILITIES		
		I-04.001550.00.03.25	201-45160-42800	UTILITIES SOCCER COMPLEX	205913	84.25
	PROJ: H07-42800		PEPSI COMPLEX	UTILITIES		
01-00712	NAPA CENTRAL					
		I-811794	201-45160-42600	SUPPLIES & MA OIL	205995	6.28
	PROJ: H01-42600		SPORTS COMPLEX EQUIPMENT	SUPPLIES/MAINTENANCE		
01-01075	JOHNSON CONTROLS					
		I-1-135254263699	201-45160-42500	REPAIR & MAIN MAC BACK SEOP HEATER REPAIR	205965	894.48
	PROJ: H06-42500		ARENA-NORTH RINK	REPAIR-MAINTENANCE		
01-01199	STURDEVANTS AUTO VALUE					
		I-815052019	201-45160-42600	SUPPLIES & MA AIR FARM	206041	24.20
	PROJ: H01-42600		SPORTS COMPLEX EQUIPMENT	SUPPLIES/MAINTENANCE		
		I-815052179	201-45160-42600	SUPPLIES & MA HYDRAULIC, AIR CONSTRN, OIL FARM	206041	152.60
	PROJ: H01-42600		SPORTS COMPLEX EQUIPMENT	SUPPLIES/MAINTENANCE		
		I-815052486	201-45160-42600	SUPPLIES & MA HIGH CAPACITY V-BELT	206041	20.99
	PROJ: H01-42600		SPORTS COMPLEX EQUIPMENT	SUPPLIES/MAINTENANCE		
		I-815052567	201-45160-42600	SUPPLIES & MA OIL FILTERS	206041	7.93
	PROJ: H01-42600		SPORTS COMPLEX EQUIPMENT	SUPPLIES/MAINTENANCE		
01-01404	MITCHELL IRON & SUPPLY					
		I-85054	201-45160-42500	REPAIR & MAIN LABOR	205988	120.00
	PROJ: H01-42500		SPORTS COMPLEX EQUIPMENT	REPAIR/MAINTENANCE		

PACKET : 07266 07267 07268

VENDOR SET: Mult

FUND : 201 PARK FUND

DEPARTMENT: 5160 SPORTS COMPLEXES

BANK: Multi

BUDGET TO USE: CB-CURRENT BUDGET

VENDOR	NAME	ITEM #	G/L ACCOUNT NAME	DESCRIPTION	CHECK#	AMOUNT
01-01518	VERIZON WIRELESS					
		I-6107215243	201-45160-42800	UTILITIES ACCT #886931646-00001	206057	47.74
01-01830	NORFESTERN ENERGY					
		I-2585121-3.02.25	201-45160-42800	UTILITIES 313 N HARMON DR	205998	95.53
PROJ: H07-42800		PEPSI COMPLEX		UTILITIES		
		I-2586408-3.02.25	201-45160-42800	UTILITIES TOURNEY HDQT	205998	18.30
PROJ: H04-42800		BASEBALL		UTILITIES		
		I-2586410-9.02.25	201-45160-42800	UTILITIES 1301 N MINNESOTA LIFT	205998	30.04
PROJ: H04-42800		BASEBALL		UTILITIES		
		I-2718054-6.02.25	201-45160-42800	UTILITIES 5825 TOWER RD	205998	957.04
PROJ: H07-42800		PEPSI COMPLEX		UTILITIES		
		I-2787244-9.02.25	201-45160-42800	UTILITIES D E CONCESSION	205998	28.98
PROJ: H05-42800		SOFTBALL		UTILITIES		
		I-2787247-2.02.25	201-45160-42800	UTILITIES WEST ELEC D E	205998	30.39
PROJ: H05-42800		SOFTBALL		UTILITIES		
		I-2787248-0.02.25	201-45160-42800	UTILITIES WEST ELEC F G	205998	81.08
PROJ: H05-42800		SOFTBALL		UTILITIES		
		I-2787249-8.02.25	201-45160-42800	UTILITIES H I J K SHOP	205998	40.01
PROJ: H05-42800		SOFTBALL		UTILITIES		
		I-2787283-7.02.25	201-45160-42800	UTILITIES SOCCER FIELD	205998	89.63
PROJ: H07-42800		PEPSI COMPLEX		UTILITIES		
		I-2787285-2.02.25	201-45160-42800	UTILITIES CADWELL PARK CONCESSION	205998	12.34
PROJ: H04-42800		BASEBALL		UTILITIES		
		I-2825237-7.02.25	201-45160-42800	UTILITIES 1301 N MINNESOTA	205998	227.56
PROJ: H04-42800		BASEBALL		UTILITIES		
		I-2920373-4.02.25	201-45160-42800	UTILITIES STAD SCOREBOARD 23	205998	181.15
PROJ: H04-42800		BASEBALL		UTILITIES		
		I-2991007-2.02.25	201-45160-42800	UTILITIES 1001 N MINNESOTA GWTR	205998	1,661.49
PROJ: H13-42800		ARENA-SOUTH RINK		UTILITIES		
01-03107	BBB'S OF SOUTH DAKOTA					
		I-7238	201-45160-42600	SUPPLIES & MA ZAMBONI SKID SHEET	205901	540.00
PROJ: H06-42600		ARENA-NORTH RINK		SUPPLIES-MATERIALS		
01-03490	VAK WALL EQUIPMENT INC					
		I-6488218	201-45160-42500	REPAIR & MAIN SCREW, BEARING, NUTS, RINGS, BUSHI	206056	4,669.92
PROJ: H01-42500		SPORTS COMPLEX EQUIPMENT		REPAIR/MAINTENANCE		
01-06290	DUREWERKS					
		I-0157720	201-45160-42500	REPAIR & MAIN CABLE, CONDUIT, BEARING, SEAL, BEL	206053	515.03
PROJ: H01-42500		SPORTS COMPLEX EQUIPMENT		REPAIR/MAINTENANCE		
01-08010	NETTLER IMPLEMENT INC-M					
		I-80389	201-45160-42500	REPAIR & MAIN SHIFTER CABLE	205982	179.99
PROJ: H01-42500		SPORTS COMPLEX EQUIPMENT		REPAIR/MAINTENANCE		
		I-80520	201-45160-42500	REPAIR & MAIN K-CLUTCH, BELT-DRIVE	205982	646.48
PROJ: H01-42500		SPORTS COMPLEX EQUIPMENT		REPAIR/MAINTENANCE		

PACKET : 07266 07267 07268

VENDOR SET: Mult

FUND : 201 PARK FUND

DEPARTMENT: 5160 SPORTS COMPLEXES

BANK: Multi

BUDGET TO USE: CB-CURRENT BUDGET

VENDOR	NAME	ITEM #	G/L ACCOUNT NAME	DESCRIPTION	CHECK#	AMOUNT
01-08130	C & B OPERATIONS LLC					
		I-13118252	201-45160-42600	SUPPLIES & MA HY-GARD,FUEL FILTER	205905	263.25
	PROJ: E01-42600		SPORTS COMPLEX EQUIPMENT	SUPPLIES/MAINTENANCE		
01-08901	CTM SERVICES INC					
		I-7754	201-45160-42500	REPAIR & MAIN STEERING UNIT	205925	2,084.73
	PROJ: E01-42500		SPORTS COMPLEX EQUIPMENT	REPAIR/MAINTENANCE		
01-09703	AMAZON CAPITAL SERVICES					
		I-14QQ-6CVC-GPH3	201-45160-42600	SUPPLIES & MA BELTS HARNESS KIT	205891	35.85
	PROJ: E01-42600		SPORTS COMPLEX EQUIPMENT	SUPPLIES/MAINTENANCE		
		I-1LKX-JHIG-7JQX	201-45160-42600	SUPPLIES & MA STEERING WHEEL COVER	205891	26.78
	PROJ: E01-42600		SPORTS COMPLEX EQUIPMENT	SUPPLIES/MAINTENANCE		
01-10154	SCHOENFELDER PORTABLES					
		I-4305	201-45160-42500	REPAIR & MAIN TOILET RENTAL	206031	300.00
	PROJ: E04-42500		BASEBALL	REPAIR/MAINTENANCE		
01-10356	CK BICYCLES & LOCKS LLC					
		I-18671	201-45160-42600	SUPPLIES & MA KEYS,PROGRAMMING KEYS	205917	155.00
	PROJ: E01-42600		SPORTS COMPLEX EQUIPMENT	SUPPLIES/MAINTENANCE		
01-10414	MIDWAY SERVICE dba VOLL					
		I-77664	201-45160-42610	GAS & FUEL OFF ROAD DIESEL FUEL #1	205983	35.85
		I-77664	201-45160-42610	GAS & FUEL OFF ROAD DIESEL FUEL #2	205983	31.90
DEPARTMENT 5160 SPORTS COMPLEXES					TOTAL:	17,422.97

PACKET : 07266 07267 07268

VENDOR SET: Mlt

FUND : 201 PARK FUND

DEPARTMENT: 5165 CADWELL CONCESSIONS

BANK: Multi

BUDGET TO USE: CB-CURRENT BUDGET

VENDOR	NAME	ITEM #	G/L ACCOUNT NAME	DESCRIPTION	CHECK#	AMOUNT
01-03700	CORE-MARK US LLC					
		I-1967744	201-45165-42610	COST OF GOODS CANDY	205921	209.19
DEPARTMENT 5165 CADWELL CONCESSIONS					TOTAL:	209.19

PACKET : 07266 07267 07268

VENDOR SET: Mult

FUND : 201 PARK FUND

DEPARTMENT: 5210 PARKS

BANK: Multi

BUDGET TO USE: CB-CURRENT BUDGET

VENDOR	NAME	ITEM #	G/L ACCOUNT NAME	DESCRIPTION	CHECK#	AMOUNT
01-00424	RUNNINGS SUPPLY INC					
		I-2007400	201-45210-42600	SUPPLIES & MA TRAILER CONNECTOR	206024	3.99
PROJ: H50-42600	PARKS EQUIPMENT			SUPPLIES/MATERIALS		
		I-2009967	201-45210-42500	REPAIR & MAIN GENERIC FARM SUPPLIES	206024	767.79
PROJ: H50-42500	PARKS EQUIPMENT			REPAIR/MAINTENANCE		
		I-2010676	201-45210-42600	SUPPLIES & MA STROKE CONTROL,PARTS	206024	64.96
PROJ: H51-42600	PARK SHOP			SUPPLIES/MATERIALS		
		I-2010742	201-45210-42600	SUPPLIES & MA ELECTRICAL TAPE,CLAMPS	206024	9.17
PROJ: H51-42600	PARK SHOP			SUPPLIES/MATERIALS		
01-00428	CARQUEST AUTO PARTS INC					
		I-4977-330234	201-45210-42500	REPAIR & MAIN WINDSHIELD WIPER BLADES	205906	45.22
PROJ: H50-42500	PARKS EQUIPMENT			REPAIR/MAINTENANCE		
01-00436	CHS FARMERS ALLIANCE					
		I-IG1647	201-45210-42610	GAS & FUEL P&R RUBY FIELDMASTER	205911	382.21
PROJ: H50-42610	PARKS EQUIPMENT			GAS/FUEL		
		I-IG1648	201-45210-42610	GAS & FUEL P&R RUBY FIELDMASTER	205911	448.60
PROJ: H50-42610	PARKS EQUIPMENT			GAS/FUEL		
		I-IG1649	201-45210-42610	GAS & FUEL P&R UNLEADED GAS	205911	936.07
PROJ: H50-42610	PARKS EQUIPMENT			GAS/FUEL		
01-00445	CITY OF MITCHELL					
		I-04.000050.00.03.25	201-45210-42800	UTILITIES 5TH/N MAIN ST	205913	16.75
PROJ: H82-42800	DOWNTOWN BEAUTIFCATION			UTILITIES		
		I-04.000900.00.03.25	201-45210-42800	UTILITIES HITCHCOCK PARK	205913	399.15
PROJ: H56-42800	HITCHCOCK PARK			UTILITIES		
		I-04.000960.00.03.25	201-45210-42800	UTILITIES HITCHCOCK PARK OFFICE	205913	106.15
PROJ: H51-42800	PARK SHOP			UTILITIES		
		I-04.001010.00.03.25	201-45210-42850	UTILITIES-VET 101 N MAIN ST	205913	53.60
PROJ: H63-42850	VETERANS PARK			UTILITIES/VETERANS PARK		
		I-04.002000.00.03.25	201-45210-42800	UTILITIES BELLA'S GARDEN	205913	167.50
PROJ: H60-42800	NORTHRIDGE PARK			UTILITIES		
		I-04.002100.00.03.25	201-45210-42800	UTILITIES PIONEER PARK	205913	53.60
PROJ: H61-42800	PIONEER PARK			UTILITIES		
		I-04.002200.00.03.25	201-45210-42800	UTILITIES PUBLIC BEACH	205913	53.60
PROJ: H74-42800	PUBLIC BEACH			UTILITIES		
		I-04.002300.00.03.25	201-45210-42800	UTILITIES 800 E 11TH AVE	205913	64.15
PROJ: H60-42800	NORTERIDGE PARK			UTILITIES		
		I-04.002400.00.03.25	201-45210-42800	UTILITIES 745 N HARMON DR	205913	64.15
PROJ: H76-42800	SANDY BEACH			UTILITIES		
		I-04.003111.00.03.25	201-45210-42800	UTILITIES 311 1/2 N HARMON DR	205913	47.40
PROJ: H66-42800	CAMP ARROYA			UTILITIES		
		I-04.003600.00.03.25	201-45210-42800	UTILITIES KIWANIS WOODLOT PARK	205913	16.75
PROJ: H71-42800	KIWANIS WOODLOT			UTILITIES		
		I-04.003950.00.03.25	201-45210-42800	UTILITIES 950 INDIAN VILLAGE RD	205913	47.40
PROJ: H77-42800	SPORTSMANS CLUB			UTILITIES		
		I-04.009700.00.03.25	201-45210-42800	UTILITIES HITCHCOCK WOOD SHOP	205913	59.15
PROJ: H51-42800	PARK SHOP			UTILITIES		

PACKET : 07266 07267 07268

VENDOR SET: Mult

FUND : 201 PARK FUND

DEPARTMENT: 5210 PARKS

BANK: Multi

BUDGET TO USE: CB-CURRENT BUDGET

VENDOR	NAME	ITEM #	G/L ACCOUNT NAME	DESCRIPTION	CHECK#	AMOUNT
01-00532	A-OX WELDING SUPPLY CO					
		I-0000321252	201-45210-42600	SUPPLIES & MA CO2 CYLINDER FILL	205889	102.97
	PROJ: H51-42600	PARK SHOP		SUPPLIES/MATERIALS		
		I-0001425460	201-45210-42600	SUPPLIES & MA SERVICE CHARGE	205889	12.50
	PROJ: H51-42600	PARK SHOP		SUPPLIES/MATERIALS		
01-01050	IVERSON					
		I-5029617	201-45210-42500	REPAIR & MAIN REAR HARNESS	205962	157.95
	PROJ: H50-42500	PARKS EQUIPMENT		REPAIR/MAINTENANCE		
01-01117	FLEETPRIDE					
		I-123609067	201-45210-42500	REPAIR & MAIN GROMMET,LED MINIBAR	205945	373.58
	PROJ: H50-42500	PARKS EQUIPMENT		REPAIR/MAINTENANCE		
		I-123982409	201-45210-42500	REPAIR & MAIN COMBINATION BOX LAMP	205945	55.99
	PROJ: H50-42500	PARKS EQUIPMENT		REPAIR/MAINTENANCE		
01-01199	STURDEVANTS AUTO VALUE					
		I-815052702	201-45210-42500	REPAIR & MAIN OIL FILTER	206041	7.93
	PROJ: H50-42500	PARKS EQUIPMENT		REPAIR/MAINTENANCE		
01-01518	VERIZON WIRELESS					
		I-6107215243	201-45210-42800	UTILITIES ACCT #886931646-00001	206057	42.74
01-01830	NORTHWESTERN ENERGY					
		I-2573053-2.03.25	201-45210-42800	UTILITIES 421 S FOSTER ST SHOP	205998	722.61
	PROJ: H51-42800	PARK SHOP		UTILITIES		
		I-2573054-0.03.25	201-45210-42800	UTILITIES 401 S FOSTER TNCT	205998	12.00
	PROJ: H56-42800	HITCHCOCK PARK		UTILITIES		
		I-2573055-7.03.25	201-45210-42800	UTILITIES 1001 E BIRCH AVE SW PWSP SELTR	205998	12.00
	PROJ: H56-42800	HITCHCOCK PARK		UTILITIES		
		I-2573056-5.03.25	201-45210-42800	UTILITIES 1001 E BIRCH AVE PWSP CONC 5	205998	8.49
	PROJ: H56-42800	HITCHCOCK PARK		UTILITIES		
		I-2573203-3.03.25	201-45210-42800	UTILITIES 1001 E HANSON AVE UNIT 91013	205998	24.70
	PROJ: H56-42800	HITCHCOCK PARK		UTILITIES		
		I-2580826-2.02.25	201-45210-42800	UTILITIES 800 E 11TH AVE	205998	8.40
	PROJ: H60-42800	NORTHRIDGE PARK		UTILITIES		
		I-2581610-9.02.25	201-45210-42800	UTILITIES PUBLIC BEACH	205998	54.87
	PROJ: H74-42800	PUBLIC BEACH		UTILITIES		
		I-2581644-8.03.25	201-45210-42800	UTILITIES KIWANIS WOODLOT	205998	41.04
	PROJ: H71-42800	KIWANIS WOODLOT		UTILITIES		
		I-2581647-1.02.25	201-45210-42800	UTILITIES 950 INDIAN VILLAGE RD	205998	26.89
	PROJ: H77-42800	SPORTSMANS CLUB		UTILITIES		
		I-2581648-9.02.25	201-45210-42800	UTILITIES ACCESS LOT LIFE	205998	9.90
	PROJ: H79-42800	LAKE PARK ACCESS AREAS		UTILITIES		
		I-2581649-7.02.25	201-45210-42800	UTILITIES DAY CAMP	205998	54.02
	PROJ: H67-42800	DAY CAMP		UTILITIES		
		I-2582639-7.02.25	201-45210-42800	UTILITIES PATTON YOUNG	205998	172.18
	PROJ: H87-42800	PATTON YOUNG		UTILITIES		
		I-2583204-9.02.25	201-45210-42800	UTILITIES 1201 S MINNESOTA PARK JENNEWEI	205998	16.00
	PROJ: H58-42800	JENNEWEIN PARK		UTILITIES		

PACKET : 07266 07267 07268

VENDOR SET: Mult

FUND : 201 PARK FUND

DEPARTMENT: 5210 PARKS

BANK: Multi

BUDGET TO USE: CB-CURRENT BUDGET

VENDOR	NAME	ITEM #	G/L ACCOUNT NAME	DESCRIPTION	CHECK#	AMOUNT
01-01830	NORWESTERN ENERGY		continued			
		I-2584325-1.02.25	201-45210-42800	UTILITIES 1300 S ROWLEY ST PARK PIONEER	205998	13.58
PROJ:	H61-42800	PIONEER PARK		UTILITIES		
		I-2584526-4.02.25	201-45210-42800	UTILITIES DRY RUN RESTROOM 20	205998	12.00
PROJ:	H55-42800	DRY RUN CREEK PARK		UTILITIES		
		I-270736-6.03.25	201-45210-42800	UTILITIES W TENNIS COURT 11	205998	12.00
PROJ:	H56-42800	HITCHECOCK PARK		UTILITIES		
		I-2748483-1.02.25	201-45210-42800	UTILITIES ACCESS LOT METER	205998	12.00
PROJ:	H79-42800	LAKE PARK ACCESS AREAS		UTILITIES		
		I-2787841-2.03.25	201-45210-42800	UTILITIES 421 S FOSTER SHOP	205998	337.85
PROJ:	H51-42800	PARK SHOP		UTILITIES		
		I-2787842-0.03.25	201-45210-42800	UTILITIES 1001 E BIRCH AVE LT SB	205998	12.00
PROJ:	H56-42800	HITCHECOCK PARK		UTILITIES		
		I-2810876-9.03.25	201-45210-42800	UTILITIES 1001 E HANSON AVE PWSP SHLTR	205998	15.36
PROJ:	H56-42800	HITCHECOCK PARK		UTILITIES		
		I-2967874-5.02.25	201-45210-42800	UTILITIES 3100 INDIAN VILLAGE RD	205998	49.63
PROJ:	H65-42800	AMPHITHEATER		UTILITIES		
		I-2973566-9.02.25	201-45210-42800	UTILITIES 621 N MAIN ST	205998	15.50
PROJ:	H62-42800	ROTARY PARK		UTILITIES		
		I-3045799-8.02.25	201-45210-42800	UTILITIES 311 1/2 N HARMON	205998	108.40
PROJ:	H66-42800	CAMP ARROYA		UTILITIES		
		I-3328555-2.02.25	201-45210-42800	UTILITIES 425 S BURR	205998	72.82
PROJ:	H55-42800	DRY RUN CREEK PARK		UTILITIES		
		I-3449572-1.02.25	201-45210-42850	UTILITIES-VET 101 N MAIN ST	205998	86.02
PROJ:	H63-42850	VETERANS PARK		UTILITIES/VETERANS PARK		
		I-3600484-4.02.25	201-45210-42800	UTILITIES 745 N HARMON DR RSTA	205998	22.68
PROJ:	H76-42800	SANDY BEACH		UTILITIES		
		I-3975325-6.02.25	201-45210-42800	UTILITIES 612 W ASH AVE	205998	54.10
PROJ:	H55-42800	DRY RUN CREEK PARK		UTILITIES		
01-01944	PFEIFER IMPLEMENT CO IN					
		I-01-191357	201-45210-42500	REPAIR & MAIN KIT BEACON LIGHT	206014	233.35
PROJ:	H50-42500	PARKS EQUIPMENT		REPAIR/MAINTENANCE		
01-02679	MENARD'S INC					
		I-83356	201-45210-42600	SUPPLIES & MA LIGHTWT TYPE X	205979	31.58
PROJ:	H51-42600	PARK SHOP		SUPPLIES/MATERIALS		
		I-83594	201-45210-42600	SUPPLIES & MA RAIL END CAP, SCREWDRIVER SET	205979	15.52
PROJ:	H56-42600	HITCHECOCK PARK		SUPPLIES/MATERIALS		
		I-83684	201-45210-42600	SUPPLIES & MA BRICK MOULDING	205979	47.82
PROJ:	H72-42600	LIONS POINT PARK		SUPPLIES/MATERIALS		
		I-83691	201-45210-42600	SUPPLIES & MA ELBOW, DOWNSPOUT	205979	21.46
PROJ:	H51-42600	PARK SHOP		SUPPLIES/MATERIALS		
		I-83744	201-45210-42600	SUPPLIES & MA WASHER, SPLIT LOCK, POOL INSERT	205979	44.94
PROJ:	H51-42600	PARK SHOP		SUPPLIES/MATERIALS		
		I-83757A	201-45210-42600	SUPPLIES & MA DOWNSPOUTS	205979	50.07
PROJ:	H56-42600	HITCHECOCK PARK		SUPPLIES/MATERIALS		
		I-83913	201-45210-42600	SUPPLIES & MA CONVENTIONAL BLADE	205979	13.98
PROJ:	H51-42600	PARK SHOP		SUPPLIES/MATERIALS		

PACKET : 07266 07267 07268

VENDOR SET: Mult

FUND : 201 PARK FUND

DEPARTMENT: 5210 PARKS

BANK: Multi

BUDGET TO USE: CB-CURRENT BUDGET

VENDOR	NAME	ITEM #	G/L ACCOUNT NAME	DESCRIPTION	CHECK#	AMOUNT
01-02679	MENARD'S INC		continued			
		I-83927	201-45210-42600	SUPPLIES & MA #2 & BTR SPF	205979	22.24
	PROJ: E68-42600		FRANKS BAY	SUPPLIES/MAINTENANCE		
		I-84004	201-45210-42600	SUPPLIES & MA POLYCARBONATE SHEET	205979	29.99
	PROJ: E56-42600		FITCHECOCK PARK	SUPPLIES/MATERIALS		
01-03107	BBB'S OF SOUTH DAKOTA					
		I-44880	201-45210-42600	SUPPLIES & MA FLANGE POST CAP	205901	14.70
	PROJ: E56-42600		FITCHECOCK PARK	SUPPLIES/MATERIALS		
01-03549	DOOSAN BOBCAT NORTH AME					
		I-4298530	201-45210-43400	CAPITAL EQUIP TOOLCAT UTILITY MACHINE	205937	63,033.83
	PROJ: E50-43400		PARKS EQUIPMENT	CAPITAL EQUIPMENT		
01-07205	BARCO PRODUCTS LLC					
		I-1KVR030893	201-45210-42600	SUPPLIES & MA TRASH CONTAINER PLASTIC LINER	205900	431.34
	PROJ: E71-42600		KIWANIS WOODLOT	SUPPLIES/MATERIALS		
01-07526	O'REILLY AUTOMOTIVE INC					
		I-2090-169490	201-45210-42500	REPAIR & MAIN MIRROR ASSEMBLY, REAR VIEW	206010	26.98
	PROJ: E50-42500		PARKS EQUIPMENT	REPAIR/MAINTENANCE		
		I-2090-169574	201-45210-42500	REPAIR & MAIN WARNING LIGHT	206010	41.79
	PROJ: E50-42500		PARKS EQUIPMENT	REPAIR/MAINTENANCE		
01-08594	MAKE IT MINE DESIGNS					
		I-39345	201-45210-42500	REPAIR & MAIN BLACK MUD FLAPS	205976	65.00
	PROJ: E50-42500		PARKS EQUIPMENT	REPAIR/MAINTENANCE		
		I-39347	201-45210-42500	REPAIR & MAIN BLACK MUD FLAPS	205976	65.00
	PROJ: E50-42500		PARKS EQUIPMENT	REPAIR/MAINTENANCE		
		I-39741	201-45210-42500	REPAIR & MAIN FORD EXPLORER DECALS	205976	163.50
	PROJ: E50-42500		PARKS EQUIPMENT	REPAIR/MAINTENANCE		
01-10154	SCHOENFELDER PORTABLES					
		I-4305	201-45210-42600	SUPPLIES & MA TOILET RENTAL	206031	170.00
	PROJ: E77-42600		SPORTSMANS CLUB	SUPPLIES/MATERIALS		
DEPARTMENT 5210 PARKS					TOTAL:	71,071.15

PACKET : 07266 07267 07268

VENDOR SET: Mult

FUND : 201 PARK FUND

DEPARTMENT: 5220 SUPERVISION

BANK: Multi

BUDGET TO USE: CB-CURRENT BUDGET

VENDOR	NAME	ITEM #	G/L ACCOUNT NAME	DESCRIPTION	CHECK#	AMOUNT
01-01518	VERIZON WIRELESS					
		I-6107215243	201-45220-42800	UTILITIES ACCT #886931646-00001	206057	47.74
01-02624	SD PUBLIC ASSURANCE ALL					
		I-31196-4221	201-45220-42100	INSURANCE BOBCAT COVERAGE CHANGE	206034	115.62
01-06750	MITCHELL TELECOM					
		I-11083320	201-45220-42800	UTILITIES ACCT #00223662-2	205991	2.40
DEPARTMENT 5220 SUPERVISION					TOTAL:	165.76
FUND 201 PARK FUND					TOTAL:	116,813.84

PACKET: 07282 CREDIT CARDS 03.24.2025

VENDOR SET: 01

FUND : 201 PARK FUND

DEPARTMENT: N/A NON-DEPARTMENTAL

BANK: APBNK

BUDGET TO USE: CB-CURRENT BUDGET

VENDOR	NAME	ITEM #	G/L ACCOUNT NAME	DESCRIPTION	CHECK#	AMOUNT
01-07141	FIRST NATIONAL BANK OMA	C-02132025A	201-346369	REFUNDS AND R CASE BACK REDEMPTION-PARK	206080	25.00-
			DEPARTMENT	NON-DEPARTMENTAL	TOTAL:	25.00-

PACKET: 07282 CREDIT CARDS 03.24.2025

VENDOR SET: 01

FUND : 201 PARK FUND

DEPARTMENT: 5110 RECREATION & AQUATICS

BANK: APBNK

BUDGET TO USE: CB-CURRENT BUDGET

VENDOR	NAME	ITEM #	G/L ACCOUNT NAME	DESCRIPTION	CHECK#	AMOUNT
01-01830	NORTEWESTERN ENERGY					
		I-2868739-0.03.25	201-45110-42850	UTILITIES-AQU 1201 E HANSON ST POOL	206084	485.63
	PROJ: J50-ELE/GAS		OUTDOOR AQUATIC CENTER	UTILITIES-ELECTRIC/GAS		
DEPARTMENT 5110 RECREATION & AQUATICS					TOTAL:	485.63

PACKET: 07282 CREDIT CARDS 03.24.2025

VENDOR SET: 01

FUND : 201 PARK FUND

DEPARTMENT: 5140 RECREATION CENTER

BANK: APBNK

BUDGET TO USE: CB-CURRENT BUDGET

VENDOR	NAME	ITEM #	G/L ACCOUNT NAME	DESCRIPTION	CHECK#	AMOUNT
01-01830	NORTHWESTERN ENERGY					
		I-3510842-2.03.25	201-45140-42800	UTILITIES 1300 N MAIN BLDG AQUATICS	206084	5,092.07
	PROJ: J02-ELE/GAS	INDOOR AQUATIC CTR		UTILITIES-ELECTRIC/GAS		
01-07141	FIRST NATIONAL BANK OMA					
		I-03102025.3199	201-45140-42600	SUPPLIES & MA QUICKEN RENEWAL	206080	76.34
	PROJ: J06-SM-OFFIC	REC CTR-GENERAL BLDG		SUPPLIES/MATERIAL-OFFICE		
		I-03102025.7726	201-45140-42700	TRAVEL, CONF NSCA MEMBERSHIP RENEWAL	206080	130.00
	PROJ: J03-DCES	REC CTR-WELLNESS/FITNESS		TRAVEL/CONF/DUE-CERTIFICATIONS		
DEPARTMENT 5140 RECREATION CENTER					TOTAL:	5,298.41

PACKET: 07282 CREDIT CARDS 03.24.2025

VENDOR SET: 01

FUND : 201 PARK FUND

DEPARTMENT: 5160 SPORTS COMPLEXES

BANK: APBNK

BUDGET TO USE: CB-CURRENT BUDGET

VENDOR	NAME	ITEM #	G/L ACCOUNT NAME	DESCRIPTION	CHECK#	AMOUNT	
01-01830	NORTHWESTERN ENERGY						
		I-2579265-6.02.25	201-45160-42800	UTILITIES	1101 N EDMUND PWSP SELTR	206084	60.22
	PROJ: H10-42800	MUNROE PARK		UTILITIES			
DEPARTMENT 5160 SPORTS COMPLEXES					TOTAL:	60.22	

PACKET: 07282 CREDIT CARDS 03.24.2025

VENDOR SET: 01

FUND : 201 PARK FUND

DEPARTMENT: 5210 PARKS

BANK: APBNK

BUDGET TO USE: CB-CURRENT BUDGET

VENDOR	NAME	ITEM #	G/L ACCOUNT NAME	DESCRIPTION	CHECK#	AMOUNT
01-01830	NORTHWESTERN ENERGY					
		I-3975323-1.03.25	201-45210-42800	UTILITIES 502 S LAWLER ST	206084	72.50
	PROJ: E55-42800	DRY RUN CREEK PARK		UTILITIES		
01-07141	FIRST NATIONAL BANK OMA					
		I-03102025.0796	201-45210-42600	SUPPLIES & MA DOG WASTE BAGGIES	206080	239.48
	PROJ: E51-42600	PARK SHOP		SUPPLIES/MATERIALS		
DEPARTMENT 5210 PARKS					TOTAL:	311.98
FUND 201 PARK FUND					TOTAL:	6,131.24

PACKET : 07287 07288 07289

VENDOR SET: Mult

FUND : 201 PARK FUND

DEPARTMENT: N/A NON-DEPARTMENTAL

BANK: Multi

BUDGET TO USE: CB-CURRENT BUDGET

VENDOR	NAME	ITEM #	G/L ACCOUNT NAME	DESCRIPTION	CHECK#	AMOUNT
01-08707	CITY OF MITCHELL	I-33125	201-346369	REFUNDS AND R SOFTBALL CONCESSION STARTUP	206129	2,000.00
				DEPARTMENT	NON-DEPARTMENTAL	TOTAL: 2,000.00

PACKET : 07287 07288 07289

VENDOR SET: Mult

FUND : 201 PARK FUND

DEPARTMENT: 5110 RECREATION & AQUATICS

BANK: Multi

BUDGET TO USE: CB-CURRENT BUDGET

VENDOR	NAME	ITEM #	G/L ACCOUNT NAME	DESCRIPTION	CHECK#	AMOUNT
01-00539	KEVIN DEVRIES					
		I-03312025	201-45110-42800	UTILITIES 2025 1ST QTR CELL PHONE	206157	45.00
01-08101	JAMIE HENKEL					
		I-03312025	201-45110-42800	UTILITIES 2025 1ST QTR CELL PHONE	206190	45.00
DEPARTMENT 5110 RECREATION & AQUATICS					TOTAL:	90.00

PACKET : 07287 07288 07289

VENDOR SET: Mult

FUND : 201 PARK FUND

DEPARTMENT: 5140 RECREATION CENTER

BANK: Multi

BUDGET TO USE: CB-CURRENT BUDGET

VENDOR	NAME	ITEM #	G/L ACCOUNT NAME	DESCRIPTION	CHECK#	AMOUNT
01-01843	PREVENTION MAGAZINE					
		I-2564	201-45140-42300	PUBLISHING SUBSCRIPTION	206271	150.00
	PROJ: J08-GENERAL		REC CTR PUBLISHING	PUBLISHING-GENERAL		
01-02560	PEPSI COLA COMPANY					
		I-97814788	201-45140-42601	CONCESSION SU SODAS,GATORADES,WATER	206261	390.92
	PROJ: J05-CONC SUP		REC CTR CONCESSIONS	CONCESSION SUPPLY		
01-02567	S & M PRINTING INC					
		I-84045	201-45140-42600	SUPPLIES & MA HEALTHY PLATE MAGNETS	206280	197.00
	PROJ: J06-SM-GENER		REC CTR-GENERAL BLDG	SUPPLIES/MATERIAL-GENERAL		
01-02679	MENARD'S INC					
		I-84274	201-45140-42600	SUPPLIES & MA RODS,SCREWS,COMPOUND,LOCKNUTS	206230	40.33
	PROJ: J06-SM-GENER		REC CTR-GENERAL BLDG	SUPPLIES/MATERIAL-GENERAL		
		I-84319	201-45140-42600	SUPPLIES & MA TAPCON.DRILL BITS	206230	48.64
	PROJ: J06-SM-GENER		REC CTR-GENERAL BLDG	SUPPLIES/MATERIAL-GENERAL		
		I-84369	201-45140-42600	SUPPLIES & MA DRILL BIT,TAPCON	206230	33.97
	PROJ: J06-SM-GENER		REC CTR-GENERAL BLDG	SUPPLIES/MATERIAL-GENERAL		
		I-84480	201-45140-42600	SUPPLIES & MA DRILL BITS	206230	38.96
	PROJ: J06-SM-BLDG		REC CTR-GENERAL BLDG	SUPPLIES/MATERIAL-BLDG		
01-02880	THUNE TRUE VALUE & APPL					
		I-A590853	201-45140-42600	SUPPLIES & MA COBALT	206311	18.99
	PROJ: J06-SM-GENER		REC CTR-GENERAL BLDG	SUPPLIES/MATERIAL-GENERAL		
		I-A590889	201-45140-42600	SUPPLIES & MA WRENCH,PROTECT/SEALER	206311	13.98
	PROJ: J06-SM-GENER		REC CTR-GENERAL BLDG	SUPPLIES/MATERIAL-GENERAL		
		I-A591268	201-45140-42600	SUPPLIES & MA NUTS, BOLTS	206311	1.15
	PROJ: J06-SM-BLDG		REC CTR-GENERAL BLDG	SUPPLIES/MATERIAL-BLDG		
01-03267	WALMART/CAPITAL ONE					
		I-8775.03122025	201-45140-42601	CONCESSION SU BUBBLRS	206326	77.64
	PROJ: J05-CONC SUP		REC CTR CONCESSIONS	CONCESSION SUPPLY		
01-03700	CORE-MARK US LLC					
		I-2043826	201-45140-42601	CONCESSION SU CANDY,TAFFY,CHIPS	206134	1,212.93
	PROJ: J05-CONC SUP		REC CTR CONCESSIONS	CONCESSION SUPPLY		
01-04821	SHAWN LACHNIT					
		I-03312025	201-45140-42800	UTILITIES 2025 1ST QTR CELL PHONE	206218	30.00
01-06627	THOMAS GULLEDGE					
		I-03312025	201-45140-42800	UTILITIES 2025 1ST QTR CELL PHONE	206181	45.00
01-09126	IDENTISYS INC					
		I-701921	201-45140-42600	SUPPLIES & MA COMPATIBLE KEY TAG	206200	375.00
	PROJ: J06-SM-GENER		REC CTR-GENERAL BLDG	SUPPLIES/MATERIAL-GENERAL		
01-09633	STAPLES					

PACKET : 07287 07288 07289

VENDOR SET: Mult

FUND : 201 PARK FUND

DEPARTMENT: 5140 RECREATION CENTER

BANK: Multi

BUDGET TO USE: CB-CURRENT BUDGET

VENDOR	NAME	ITEM #	G/L ACCOUNT NAME	DESCRIPTION	CHECK#	AMOUNT
01-09633	STAPLES		continued			
		I-6026559126	201-45140-42600	SUPPLIES & MA PORTABLE FILE STORAGE	206303	35.69
	PROJ: J06-SM-OFFIC		REC CTR-GENERAL BLDG	SUPPLIES/MATERIAL-OFFICE		
		I-6027475609	201-45140-42600	SUPPLIES & MA TERRY BAR TOWELS	206303	127.86
	PROJ: J06-SM-GENER		REC CTR-GENERAL BLDG	SUPPLIES/MATERIAL-GENERAL		
01-09703	AMAZON CAPITAL SERVICES					
		I-1NRJ-3CVN-GT17	201-45140-42601	CONCESSION SU M&MS,GUMBALLS,AIRHEADS	206100	156.85
	PROJ: J05-CONC SUP		REC CTR CONCESSIONS	CONCESSION SUPPLY		
		I-1P47-YWDD-4TRT	201-45140-42601	CONCESSION SU CANDY DISKS	206100	53.85
	PROJ: J05-CONC SUP		REC CTR CONCESSIONS	CONCESSION SUPPLY		
01-10356	CK BICYCLES & LOCKS LLC					
		I-18607	201-45140-42600	SUPPLIES & MA KEY	206130	5.00
	PROJ: J06-SM-GENER		REC CTR-GENERAL BLDG	SUPPLIES/MATERIAL-GENERAL		
DEPARTMENT 5140 RECREATION CENTER					TOTAL:	3,053.76

PACKET : 07287 07288 07289

VENDOR SET: Mult

FUND : 201 PARK FUND

DEPARTMENT: 5160 SPORTS COMPLEXES

BANK: Multi

BUDGET TO USE: CB-CURRENT BUDGET

VENDOR	NAME	ITEM #	G/L ACCOUNT NAME	DESCRIPTION	CHECK#	AMOUNT
01-00008	ELFSTRAND'S ACE HARDWAR					
		I-3198	201-45160-42600	SUPPLIES & MA MISC FASTENERS	206162	9.50
	PROJ: E01-42600		SPORTS COMPLEX EQUIPMENT	SUPPLIES/MAINTENANCE		
		I-4412	201-45160-42600	SUPPLIES & MA HARNESS	206162	13.99
	PROJ: E01-42600		SPORTS COMPLEX EQUIPMENT	SUPPLIES/MAINTENANCE		
		I-4860	201-45160-42600	SUPPLIES & MA FASTENERS	206162	5.54
	PROJ: E07-42600		PEPSI COMPLEX	SUPPLIES/MATERIALS		
01-00145	AMERICAN GARAGE DOOR CO					
		I-M43634	201-45160-42500	REPAIR & MAIN ICE ARENA DOOR REPAIR	206102	120.00
	PROJ: E13-42500		ARENA-SOUTH RINK	REPAIR-MAINTENANCE		
01-00404	NOLAN TEGELS					
		I-03312025	201-45160-42800	UTILITIES 2025 1ST QTR CELL PHONE	206309	45.00
01-00424	RUNNINGS SUPPLY INC					
		I-2023894	201-45160-42600	SUPPLIES & MA WINCH HAND	206278	89.98
	PROJ: E01-42600		SPORTS COMPLEX EQUIPMENT	SUPPLIES/MAINTENANCE		
01-00428	CARQUEST AUTO PARTS INC					
		I-4977-330623	201-45160-42600	SUPPLIES & MA BRAKE CLEAN NON-CHLR	206125	41.23
	PROJ: E01-42600		SPORTS COMPLEX EQUIPMENT	SUPPLIES/MAINTENANCE		
		I-4977-330788	201-45160-42600	SUPPLIES & MA LIGHT BAR	206125	110.00
	PROJ: E01-42600		SPORTS COMPLEX EQUIPMENT	SUPPLIES/MAINTENANCE		
01-00436	CHS FARMERS ALLIANCE					
		I-IG4060	201-45160-42610	GAS & FUEL HOCKEY PROPANE FILL	206127	26.00
	PROJ: E01-42610		SPORTS COMPLEX EQUIPMENT	GAS-FUEL		
		I-IG4097	201-45160-42610	GAS & FUEL HOCKEY PROPANE FILL	206127	26.00
	PROJ: E01-42610		SPORTS COMPLEX EQUIPMENT	GAS-FUEL		
		I-IG4140	201-45160-42610	GAS & FUEL HOCKEY PROPANE BOTTLE FILL	206127	52.00
	PROJ: E01-42610		SPORTS COMPLEX EQUIPMENT	GAS-FUEL		
01-00752	MITCHELL PLUMBING & HEA					
		I-36643	201-45160-42500	REPAIR & MAIN REPLACE STORAGE TANK PUMP	206241	1,718.77
	PROJ: E13-42500		ARENA-SOUTH RINK	REPAIR-MAINTENANCE		
01-00839	PIONEER MANUFACTURING C					
		I-INV-241467	201-45160-42600	SUPPLIES & MA BRITE STRIPE WHITE	206267	1,176.85
	PROJ: E07-42600		PEPSI COMPLEX	SUPPLIES/MATERIALS		
01-01199	STURDEVANTS AUTO VALUE					
		I-815052703	201-45160-42600	SUPPLIES & MA OIL FILTER	206306	7.93
	PROJ: E01-42600		SPORTS COMPLEX EQUIPMENT	SUPPLIES/MAINTENANCE		
		I-815053110	201-45160-42600	SUPPLIES & MA AIR CONST,FARM,SUPER FUNNEL	206306	47.49
	PROJ: E01-42600		SPORTS COMPLEX EQUIPMENT	SUPPLIES/MAINTENANCE		
		I-815053408	201-45160-42600	SUPPLIES & MA OIL FILTER	206306	5.73
	PROJ: E01-42600		SPORTS COMPLEX EQUIPMENT	SUPPLIES/MAINTENANCE		
		I-815053435	201-45160-42600	SUPPLIES & MA GEAR OIL	206306	12.53
	PROJ: E01-42600		SPORTS COMPLEX EQUIPMENT	SUPPLIES/MAINTENANCE		

PACKET : 07287 07288 07289

VENDOR SET: Mult

FUND : 201 PARK FUND

DEPARTMENT: 5160 SPORTS COMPLEXES

BANK: Multi

BUDGET TO USE: CB-CURRENT BUDGET

VENDOR	NAME	ITEM #	G/L ACCOUNT NAME	DESCRIPTION	CHECK#	AMOUNT
01-01199	STURDEVANTS AUTO VALVE	continued				
		I-815053577	201-45160-42600	SUPPLIES & MA OIL FILTER	206306	11.97
	PROJ: H01-42600		SPORTS COMPLEX EQUIPMENT	SUPPLIES/MAINTENANCE		
01-01497	GRAINGER					
		I-9453467590	201-45160-42600	SUPPLIES & MA CABLE TIES	206179	232.54
	PROJ: H07-42600		PEPSI COMPLEX	SUPPLIES/MATERIALS		
01-01830	NORTEWESTERN ENERGY					
		I-2579141-9.03.25	201-45160-42800	UTILITIES 1001 N MINNESOTA EMTR	206252	9,809.90
	PROJ: H06-42800		ARENA-NORTE RINK	UTILITIES		
		I-2991007-2.03.25	201-45160-42800	UTILITIES 1001 N MINNESOTA GMTR	206252	1,391.30
	PROJ: H06-42800		ARENA-NORTE RINK	UTILITIES		
01-02480	SPK & ASSOCIATES					
		I-2025-23 P.E. #1	201-45160-43300	CAPITAL IMPRO 2025-23 P.E. #1	206300	4,032.99
01-02804	TMA STORES					
		I-108321	201-45160-42500	REPAIR & MAIN IRONHEAD TIRES	206314	671.83
	PROJ: H01-42500		SPORTS COMPLEX EQUIPMENT	REPAIR/MAINTENANCE		
01-03490	VAN WALL EQUIPMENT INC					
		I-6498685	201-45160-42500	REPAIR & MAIN BUSHING,NUTS,WHEEL,ROLLER,PIN	206321	489.45
	PROJ: H01-42500		SPORTS COMPLEX EQUIPMENT	REPAIR/MAINTENANCE		
01-06290	TURFWERKS					
		I-OI57734	201-45160-42500	REPAIR & MAIN TILT STEERING	206320	877.05
	PROJ: H01-42500		SPORTS COMPLEX EQUIPMENT	REPAIR/MAINTENANCE		
		I-OI57751	201-45160-42500	REPAIR & MAIN BRAKE DISC,LOW HEAD CA	206320	69.72
	PROJ: H01-42500		SPORTS COMPLEX EQUIPMENT	REPAIR/MAINTENANCE		
01-06698	BEACON ATHLETICS LLC					
		I-0607262-IN	201-45160-42600	SUPPLIES & MA DOUBLE SIDED HOME PLATE	206119	3,337.00
	PROJ: H05-42600		SOFTBALL	SUPPLIES/MATERIALS		
01-08130	C & B OPERATIONS LLC					
		I-13130364	201-45160-42600	SUPPLIES & MA MOWER WHEEL BOLT	206124	9.84
	PROJ: H01-42600		SPORTS COMPLEX EQUIPMENT	SUPPLIES/MAINTENANCE		
		I-13141333	201-45160-42500	REPAIR & MAIN BLADE	206124	116.23
	PROJ: H01-42500		SPORTS COMPLEX EQUIPMENT	REPAIR/MAINTENANCE		
01-08281	VESTIS					
		I-6380270130	201-45160-42600	SUPPLIES & MA MAT CLEANING	206324	59.73
	PROJ: H06-42600		ARENA-NORTH RINK	SUPPLIES-MATERIALS		
01-09035	TYLER VETCH					
		I-03312025	201-45160-42800	UTILITIES 2025 1ST QTR CELL PHONE	206325	45.00
01-09076	ROGER PREWETT II					

PACKET : 07287 07288 07289

VENDOR SET: Mult

FUND : 201 PARK FUND

DEPARTMENT: 5160 SPORTS COMPLEXES

BANK: Multi

BUDGET TO USE: CB-CURRENT BUDGET

VENDOR	NAME	ITEM #	G/L ACCOUNT NAME	DESCRIPTION	CHECK#	AMOUNT
01-09076	ROGER PREWETT II		continued			
		I-03312025	201-45160-42800	UTILITIES 2025 1ST QTR CELL PHONE	206272	45.00
01-09349	HOWES OIL CO					
		I-354230	201-45160-42610	GAS & FUEL UNLEADED GAS	206198	294.38
01-09633	STAPLES					
		I-6027013057	201-45160-42600	SUPPLIES & MA PAPER TOWELS	206303	119.98
	PROJ: H06-42600		ARENA-NORTH RINK	SUPPLIES-MATERIALS		
01-10356	CK BICYCLES & LOCKS LLC					
		I-18625	201-45160-42600	SUPPLIES & MA KEYS CUT	206130	24.00
	PROJ: H05-42600		SOFTBALL	SUPPLIES/MATERIALS		
01-10446	JESSE SCHLIMGEN					
		I-03312025	201-45160-42800	UTILITIES 2025 1ST QTR CELL PHONE	206284	45.00
DEPARTMENT 5160 SPORTS COMPLEXES					TOTAL:	25,190.59

PACKET : 07287 07288 07289

VENDOR SET: Mult

FUND : 201 PARK FUND

DEPARTMENT: 5210 PARKS

BANK: Multi

BUDGET TO USE: CB-CURRENT BUDGET

VENDOR	NAME	ITEM #	G/L ACCOUNT NAME	DESCRIPTION	CHECK#	AMOUNT
01-00177	RON'S SAW SALES					
		I-221689	201-45210-42600	SUPPLIES & MA CHAIN,CARBURETOR COVER BOX	206276	132.48
	PROJ: H51-42600		PARK SHOP	SUPPLIES/MATERIALS		
01-00424	RUNNINGS SUPPLY INC					
		I-2020440	201-45210-42600	SUPPLIES & MA OIL ABSORBENT	206278	37.96
	PROJ: H51-42600		PARK SHOP	SUPPLIES/MATERIALS		
		I-2023066	201-45210-42650	UNIFORMS BRUSKE PANTS	206278	139.96
		I-2023655	201-45210-42600	SUPPLIES & MA HILLMAN BULK PRODUCTS	206278	10.68
	PROJ: H51-42600		PARK SHOP	SUPPLIES/MATERIALS		
		I-2024317	201-45210-42600	SUPPLIES & MA BULK BIN PRODUCTS	206278	4.49
	PROJ: H51-42600		PARK SHOP	SUPPLIES/MATERIALS		
01-00436	CES FARMERS ALLIANCE					
		I-IG1887	201-45210-42610	GAS & FUEL P&R RUBY FIELDMASTER	206127	192.89
	PROJ: H50-42610		PARKS EQUIPMENT	GAS/FUEL		
		I-IG1888	201-45210-42610	GAS & FUEL P&R RUBY FIELDMASTER	206127	211.28
	PROJ: H50-42610		PARKS EQUIPMENT	GAS/FUEL		
		I-IG1889	201-45210-42610	GAS & FUEL P&R UNLEADED GAS	206127	691.53
	PROJ: H50-42610		PARKS EQUIPMENT	GAS/FUEL		
01-00734	PRAIRIELAND AWNING CANV					
		I-936164	201-45210-42500	REPAIR & MAIN REPAIR MOWER BAGS	206269	86.50
	PROJ: H50-42500		PARKS EQUIPMENT	REPAIR/MAINTENANCE		
01-01117	FLEETPRIDE					
		I-124195213	201-45210-42500	REPAIR & MAIN RED LAMP COMBINATION BOX	206170	57.99
	PROJ: H50-42500		PARKS EQUIPMENT	REPAIR/MAINTENANCE		
01-01199	STURDEVANTS AUTO VALUE					
		I-815053254	201-45210-42500	REPAIR & MAIN BATTERY	206306	129.73
	PROJ: H50-42500		PARKS EQUIPMENT	REPAIR/MAINTENANCE		
01-01830	NORTEWESTERN ENERGY					
		I-2581647-1.03.25	201-45210-42800	UTILITIES 950 INDIAN VILLAGE RD	206252	26.84
	PROJ: H77-42800		SPORTSMANS CLUB	UTILITIES		
		I-2582639-7.03.25	201-45210-42800	UTILITIES PATTON YOUNG	206252	158.91
	PROJ: H87-42800		PATTON YOUNG	UTILITIES		
		I-2698971-5.03.25	201-45210-42800	UTILITIES CHRISTMAS LIGHTS	206252	2,420.50
	PROJ: H82-42800		DOWNTOWN BEAUTIFCATION	UTILITIES		
		I-2748483-1.03.25	201-45210-42800	UTILITIES ACCESS LOT METER	206252	12.00
	PROJ: H79-42800		LAKE PARK ACCESS AREAS	UTILITIES		
		I-2967874-5.03.25	201-45210-42800	UTILITIES 3100 INDIAN VILLAGE RD	206252	49.92
	PROJ: H65-42800		AMPHITHEATER	UTILITIES		
		I-2997129-8.03.25	201-45210-42800	UTILITIES 800 E 11TH AVE	206252	17.30
	PROJ: H60-42800		NORTHRIDGE PARK	UTILITIES		
		I-3975325-6.03.25	201-45210-42800	UTILITIES 612 W ASH AVE	206252	47.35
	PROJ: H55-42800		DRY RUN CREEK PARK	UTILITIES		

PACKET : 07287 07288 07289

VENDOR SET: Mult

FUND : 201 PARK FUND

DEPARTMENT: 5210 PARKS

BANK: Multi

BUDGET TO USE: CB-CURRENT BUDGET

VENDOR	NAME	ITEM #	G/L ACCOUNT NAME	DESCRIPTION	CHECK#	AMOUNT
01-01944	PFEIFER IMPLEMENT CO IN					
		I-01-191784	201-45210-42500	REPAIR & MAIN VALVE,FLUID HYDRAULIC,CLAMP,FL	206265	3,065.92
	PROJ: H50-42500	PARKS EQUIPMENT		REPAIR/MAINTENANCE		
01-01964	DAKOTA SUPPLY GROUP					
		I-S104537900.001	201-45210-42600	SUPPLIES & MA PVC PIPES,ELBOWS,COUPLINGS	206150	1,401.20
	PROJ: H56-42600	HITCHCOCK PARK		SUPPLIES/MATERIALS		
		I-S104550303.001	201-45210-42600	SUPPLIES & MA CAP PVCS	206150	21.56
	PROJ: H56-42600	HITCHCOCK PARK		SUPPLIES/MATERIALS		
		I-S104550303.002	201-45210-42600	SUPPLIES & MA CAP PVC	206150	7.62
	PROJ: H56-42600	HITCHCOCK PARK		SUPPLIES/MATERIALS		
		I-S104553138.001	201-45210-42600	SUPPLIES & MA PVC CAP	206150	2.90
	PROJ: H56-42600	HITCHCOCK PARK		SUPPLIES/MATERIALS		
01-02480	SPK & ASSOCIATES					
		I-2023-14 P.E. #10	201-45210-43300	CAPITAL IMPRO 2023-14 P.E. #10	206300	378.75
		I-2023-14 P.E. #11	201-45210-43300	CAPITAL IMPRO 2023-14 P.E. #11	206300	4,182.27
01-02650	STAN HOUSTON EQUIP CO I					
		I-2607848	201-45210-42600	SUPPLIES & MA LAWN RAKE	206302	147.80
	PROJ: H51-42600	PARK SHOP		SUPPLIES/MATERIALS		
01-02679	MENARD'S INC					
		I-84180	201-45210-42600	SUPPLIES & MA WHITE PVC TRIM	206230	126.84
	PROJ: H72-42600	LIONS POINT PARK		SUPPLIES/MATERIALS		
		I-84540	201-45210-42600	SUPPLIES & MA PVC CAP	206230	7.56
	PROJ: H56-42600	HITCHCOCK PARK		SUPPLIES/MATERIALS		
		I-84683	201-45210-42600	SUPPLIES & MA FIR,HEX NUT,FLAT WASHER,BOLT	206230	33.37
	PROJ: H78-42600	WEST END BOAT LAUNCE		SUPPLIES/MATERIALS		
01-07205	BARCO PRODUCTS LLC					
		I-INVRCO31015	201-45210-42600	SUPPLIES & MA HOOD TOP RECEPTACLES	206116	1,844.32
	PROJ: H56-42600	HITCHCOCK PARK		SUPPLIES/MATERIALS		
01-08371	BRAD GATES					
		I-03312025	201-45210-42800	UTILITIES 2025 1ST QTR CELL PHONE	206177	45.00
01-09349	HOWES OIL CO					
		I-354230	201-45210-42610	GAS & FUEL UNLEADED GAS	206198	22.29
01-09703	AMAZON CAPITAL SERVICES					
		I-1LN9-9QDN-1P7N	201-45210-42600	SUPPLIES & MA TENNIS NETS,BLUETOOTH EARPIECE	206100	1,396.93
	PROJ: H56-42600	HITCHCOCK PARK		SUPPLIES/MATERIALS		
		I-1M1G-MH40-CMYX	201-45210-42600	SUPPLIES & MA SCREEN PROTECTOR	206100	33.89
	PROJ: H51-42600	PARK SHOP		SUPPLIES/MATERIALS		
01-10356	CK BICYCLES & LOCKS LLC					
		I-18963	201-45210-42600	SUPPLIES & MA KEY	206130	7.00
	PROJ: H51-42600	PARK SHOP		SUPPLIES/MATERIALS		

PACKET : 07287 07288 07289

VENDOR SET: Mult

FUND : 201 PARK FUND

DEPARTMENT: 5210 PARKS

BANK: Multi

BUDGET TO USE: CB-CURRENT BUDGET

VENDOR	NAME	ITEM #	G/L ACCOUNT NAME	DESCRIPTION	CHECK#	AMOUNT
01-10453	BRADY ANDERA	I-03312025	201-45210-42800	UTILITIES 2025 1ST QTR CELL PHONE	206104	45.00
DEPARTMENT 5210 PARKS					TOTAL:	17,198.53

PACKET : 07287 07288 07289

VENDOR SET: Mult

FUND : 201 PARK FUND

DEPARTMENT: 5220 SUPERVISION

BANK: Multi

BUDGET TO USE: CB-CURRENT BUDGET

VENDOR	NAME	ITEM #	G/L ACCOUNT NAME	DESCRIPTION	CHECK#	AMOUNT
01-00356	QUALIFIED PRESORT SERVI					
		I-2279-1618	201-45220-42300	PUBLISHING POSTAGE 03.01-14.2025	206273	0.73
01-03363	N R P A					
		I-438603.2025	201-45220-42700	TRAVEL, CONF. NELSON 2025 DUES	206248	180.00
DEPARTMENT 5220 SUPERVISION					TOTAL:	180.73
FUND 201 PARK FUND					TOTAL:	47,713.61

CITY OF MITCHELL
 REVENUE & EXPENSE REPORT (UNAUDITED)
 AS OF: MARCH 31ST, 2025

619-CAMPGROUND
 FINANCIAL SUMMARY

	CURRENT BUDGET	CURRENT PERIOD	PRIOR YEAR YTD ACTUAL	CURRENT YTD ACTUAL	BUDGET BALANCE	% YTD BUDGET
<u>REVENUE SUMMARY</u>						
INTERGOVERNMENTAL REV	0	0.00	0.00	0.00	0.00	0.00
MISCELLANEOUS REVENUE	(3,100)	(122.43)	(304.25)	(294.00)	(2,806.00)	9.48
CHARGES-GOODS & SERVICES	<u>118,100</u>	<u>7,681.81</u>	<u>22,082.21</u>	<u>16,270.39</u>	<u>101,829.61</u>	<u>13.78</u>
TOTAL REVENUES	115,000	7,559.38	21,777.96	15,976.39	99,023.61	86.11
<u>EXPENDITURE SUMMARY</u>						
<u>CAMPGROUND</u>						
OTHER	0	0.00	0.00	0.00	0.00	0.00
SALARIES	32,450	0.00	0.00	0.00	32,450.00	0.00
CURRENT EXPENSES	42,394	1,500.37	4,047.71	3,979.98	38,414.02	9.39
CAPITAL OUTLAY	<u>10,000</u>	<u>9,949.00</u>	<u>0.00</u>	<u>9,949.00</u>	<u>51.00</u>	<u>99.49</u>
TOTAL CAMPGROUND	<u>84,844</u>	<u>11,449.37</u>	<u>4,047.71</u>	<u>13,928.98</u>	<u>70,915.02</u>	<u>83.58</u>
TOTAL EXPENDITURES	84,844	11,449.37	4,047.71	13,928.98	70,915.02	83.58
REVENUE OVER/(UNDER) EXPENDITURES	30,156 (3,889.99)	17,730.25	2,047.41	28,108.59	93.21
OTHER SOURCES	0	0.00	120,000.00	0.00	0.00	0.00
REVENUES & OTHER SOURCES OVER (UNDER) EXPENDITURES & OTHER (USES)	30,156 (3,889.99)	137,730.25	2,047.41	28,108.59	0.00

CITY OF MITCHELL
 REVENUE & EXPENSE REPORT (UNAUDITED)
 AS OF: MARCH 31ST, 2025

619-CAMPGROUND

REVENUES	CURRENT BUDGET	CURRENT PERIOD	PRIOR YEAR YDT ACTUAL	CURRENT YTD ACTUAL	BUDGET BALANCE	% YTD BUDGET
<u>INTERGOVERNMENTAL REV</u>						
619-3310 FEMA GRANT-EMERGENCY SHELTER	0	0.00	0.00	0.00	0.00	0.00
TOTAL INTERGOVERNMENTAL REV	0	0.00	0.00	0.00	0.00	0.00
<u>MISCELLANEOUS REVENUE</u>						
619-369 REFUNDS & REIMBURSEMENTS	0	0.00	0.00	0.00	0.00	0.00
619-3692 CREDIT CARD FEES	(3,100)	(122.43)	(304.25)	(294.00)	(2,806.00)	9.48
TOTAL MISCELLANEOUS REVENUE	(3,100)	(122.43)	(304.25)	(294.00)	(2,806.00)	90.52
<u>CHARGES-GOODS & SERVICES</u>						
619-3771 FEES	110,000	7,168.26	21,753.23	15,239.72	94,760.28	13.85
619-3773 CONCESSIONS	1,100	0.00	0.00	0.00	1,100.00	0.00
619-3774 LAUNDRY/CLEANING/DAMAGES	500	0.00	0.00	0.00	500.00	0.00
619-3775 RENTALS	5,000	0.00	0.00	0.00	5,000.00	0.00
619-37790 SALES TAX-TOURISM	1,500	107.55	328.98	224.75	1,275.25	14.98
619-37795 BID #4 TAX	0	406.00	0.00	805.92	(805.92)	0.00
TOTAL CHARGES-GOODS & SERVICES	118,100	7,681.81	22,082.21	16,270.39	101,829.61	86.22
TOTAL REVENUE	115,000	7,559.38	21,777.96	15,976.39	99,023.61	86.11

CITY OF MITCHELL
REVENUE & EXPENSE REPORT (UNAUDITED)
AS OF: MARCH 31ST, 2025

619-CAMPGROUND
CAMPGROUND

DEPARTMENTAL EXPENDITURES	CURRENT BUDGET	CURRENT PERIOD	PRIOR YEAR YDT ACTUAL	CURRENT YTD ACTUAL	BUDGET BALANCE	% YTD BUDGET
<u>OTHER</u>						
619-45220-21670 DEPRECIATION EXPENSE	0	0.00	0.00	0.00	0.00	0.00
TOTAL OTHER	0	0.00	0.00	0.00	0.00	0.00
<u>SALARIES</u>						
619-45220-41100 SALARIES	0	0.00	0.00	0.00	0.00	0.00
619-45220-41120 PART TIME	30,144	0.00	0.00	0.00	30,144.00	0.00
619-45220-41200 SOCIAL SECURITY/MEDICARE	2,306	0.00	0.00	0.00	2,306.00	0.00
619-45220-41300 RETIREMENT	0	0.00	0.00	0.00	0.00	0.00
619-45220-41500 GROUP INSURANCE	0	0.00	0.00	0.00	0.00	0.00
TOTAL SALARIES	32,450	0.00	0.00	0.00	32,450.00	100.00
<u>CURRENT EXPENSES</u>						
619-45220-42100 INSURANCE	0	0.00	0.00	0.00	0.00	0.00
619-45220-42200 PROFESSIONAL SERVICES	0	0.00	0.00	0.00	0.00	0.00
619-45220-42300 ADVERTISING/PROMOTION	1,200	0.00	0.00	0.00	1,200.00	0.00
619-45220-42500 REPAIR & MAINTENANCE	8,000	475.00	95.83	475.00	7,525.00	5.94
619-45220-42600 SUPPLIES	2,500	0.00	281.00	30.00	2,470.00	1.20
619-45220-42610 COST OF GOODS SOLD	0	0.00	0.00	0.00	0.00	0.00
619-45220-42620 COMPUTER SOFTWARE	4,144	161.56	1,766.19	1,755.93	2,388.07	42.37
619-45220-42650 MINOR EQUIPMENT	0	0.00	0.00	0.00	0.00	0.00
619-45220-42800 UTILITIES	21,150	811.22	1,740.86	1,572.24	19,577.76	7.43
619-45220-42931 TOURISM TAX-1.5%	1,600	52.59	163.83	146.81	1,453.19	9.18
619-45220-42935 BID TAX	3,800	0.00	0.00	0.00	3,800.00	0.00
TOTAL CURRENT EXPENSES	42,394	1,500.37	4,047.71	3,979.98	38,414.02	90.61
<u>CAPITAL OUTLAY</u>						
619-45220-43200 BUILDINGS	10,000	0.00	0.00	0.00	10,000.00	0.00
619-45220-43400 EQUIPMENT	0	9,949.00	0.00	9,949.00	(9,949.00)	0.00
TOTAL CAPITAL OUTLAY	10,000	9,949.00	0.00	9,949.00	51.00	0.51
TOTAL CAMPGROUND	84,844	11,449.37	4,047.71	13,928.98	70,915.02	83.58
=====						
TOTAL EXPENDITURES	84,844	11,449.37	4,047.71	13,928.98	70,915.02	83.58
=====						
REVENUE OVER/(UNDER) EXPENDITURES	30,156 (3,889.99)	17,730.25	2,047.41	28,108.59	93.21

CITY OF MITCHELL
 REVENUE & EXPENSE REPORT (UNAUDITED)
 AS OF: MARCH 31ST, 2025

619-CAMPGROUND
 CAMPGROUND

DEPARTMENTAL EXPENDITURES	CURRENT BUDGET	CURRENT PERIOD	PRIOR YEAR YTD ACTUAL	CURRENT YTD ACTUAL	BUDGET BALANCE	% YTD BUDGET
<u>OTHER FINANCING SOURCES</u>						
619-3900 FROM GENERAL FUND	0	0.00	120,000.00	0.00	0.00	0.00
619-39104 DAMAGE/LOSS REIMB-CAP ASSETS	<u>0</u>	<u>0.00</u>	<u>0.00</u>	<u>0.00</u>	<u>0.00</u>	<u>0.00</u>
TOTAL OTHER FINANCING SOURCES	0	0.00	120,000.00	0.00	0.00	0.00
<hr/>						
REVENUES & OTHER SOURCES OVER (UNDER) EXPENDITURES & OTHER (USES)	30,156 (3,889.99)	137,730.25	2,047.41	28,108.59	93.21

CITY OF MITCHELL
REVENUE & EXPENSE REPORT (UNAUDITED)
AS OF: MARCH 31ST, 2025

201-PARK FUND
FINANCIAL SUMMARY

	CURRENT BUDGET	CURRENT PERIOD	PRIOR YEAR YDT ACTUAL	CURRENT YTD ACTUAL	BUDGET BALANCE	% YTD BUDGET
<u>REVENUE SUMMARY</u>						
INTERGOVERNMENTAL REV	152,500	2,270.58	12,564.04	5,886.95	146,613.05	3.86
CHARGES-GOODS & SERVICES	1,066,973	72,799.33	208,552.12	220,969.35	846,003.65	20.71
MISCELLANEOUS REVENUE	<u>16,532</u>	<u>156.49</u>	<u>(646.68)</u>	<u>(1,266.46)</u>	<u>17,798.46</u>	<u>7.66-</u>
TOTAL REVENUES	1,236,005	75,226.40	220,469.48	225,589.84	1,010,415.16	81.75
<u>EXPENDITURE SUMMARY</u>						
<u>RECREATION & AQUATICS</u>						
SALARIES	453,400	19,446.62	57,912.81	58,268.46	395,131.54	12.85
CURRENT EXPENSES	212,750	1,024.94	12,087.25	9,012.80	203,737.20	4.24
CAPITAL OUTLAY	<u>0</u>	<u>0.00</u>	<u>0.00</u>	<u>0.00</u>	<u>0.00</u>	<u>0.00</u>
TOTAL RECREATION & AQUATICS	666,150	20,471.56	70,000.06	67,281.26	598,868.74	89.90
<u>RECREATION CENTER</u>						
SALARIES	726,977	50,953.21	166,720.35	168,500.51	558,476.49	23.18
CURRENT EXPENSES	316,217	44,213.56	69,668.45	83,612.73	232,604.27	26.44
CAPITAL OUTLAY	<u>120,000</u>	<u>0.00</u>	<u>87,440.90</u>	<u>20,143.20</u>	<u>99,856.80</u>	<u>16.79</u>
TOTAL RECREATION CENTER	1,163,194	95,166.77	323,829.70	272,256.44	890,937.56	76.59
<u>SPORTS COMPLEXES</u>						
SALARIES	497,857	29,358.88	88,300.19	90,530.06	407,326.94	18.18
CURRENT EXPENSES	552,604	32,888.10	40,130.08	56,128.98	496,475.22	10.16
CAPITAL OUTLAY	<u>278,000</u>	<u>0.00</u>	<u>66,171.13</u>	<u>0.00</u>	<u>278,000.00</u>	<u>0.00</u>
TOTAL SPORTS COMPLEXES	1,328,461	62,246.98	194,601.40	146,659.04	1,181,802.16	88.96
<u>CADWELL CONCESSIONS</u>						
SALARIES	14,300	0.00	0.00	0.00	14,300.00	0.00
CURRENT EXPENSES	35,500	209.19	234.94	209.19	35,290.81	0.59
CAPITAL OUTLAY	<u>0</u>	<u>0.00</u>	<u>0.00</u>	<u>0.00</u>	<u>0.00</u>	<u>0.00</u>
TOTAL CADWELL CONCESSIONS	49,800	209.19	234.94	209.19	49,590.81	99.58
<u>PARKS</u>						
SALARIES	740,197	41,873.98	131,431.86	125,905.73	614,291.27	17.01
CURRENT EXPENSES	327,105	12,038.74	26,676.68	20,995.04	306,109.96	6.42
CAPITAL OUTLAY	<u>457,000</u>	<u>69,641.33</u>	<u>97,813.20</u>	<u>74,620.08</u>	<u>382,379.92</u>	<u>16.33</u>
TOTAL PARKS	1,524,302	123,554.05	255,921.74	221,520.85	1,302,781.15	85.47

CITY OF MITCHELL
 REVENUE & EXPENSE REPORT (UNAUDITED)
 AS OF: MARCH 31ST, 2025

201-PARK FUND
 FINANCIAL SUMMARY

	CURRENT BUDGET	CURRENT PERIOD	PRIOR YEAR YTD ACTUAL	CURRENT YTD ACTUAL	BUDGET BALANCE	% YTD BUDGET
<u>SUPERVISION</u>						
SALARIES	233,484	12,683.71	55,056.98	38,069.33	195,414.67	16.30
CURRENT EXPENSES	108,343	170.76	114,167.00	19,456.32	88,886.68	17.96
CAPITAL OUTLAY	<u>0</u>	<u>0.00</u>	<u>0.00</u>	<u>0.00</u>	<u>0.00</u>	<u>0.00</u>
TOTAL SUPERVISION	<u>341,827</u>	<u>12,854.47</u>	<u>169,223.98</u>	<u>57,525.65</u>	<u>284,301.35</u>	<u>83.17</u>
TOTAL EXPENDITURES	5,073,734	314,503.02	1,013,811.82	765,452.43	4,308,281.77	84.91
REVENUE OVER/(UNDER) EXPENDITURES	(3,837,729)	(239,276.62)	(793,342.34)	(539,862.59)	(3,297,866.61)	85.93
OTHER SOURCES	3,735,493	0.00	2,930,000.00	0.00	3,735,493.00	0.00
OTHER USES	0	0.00	0.00	0.00	0.00	0.00
REVENUES & OTHER SOURCES OVER (UNDER) EXPENDITURES & OTHER (USES)	(102,236)	(239,276.62)	2,136,657.66	(539,862.59)	437,626.39	0.00

CITY OF MITCHELL
REVENUE & EXPENSE REPORT (UNAUDITED)

AS OF: MARCH 31ST, 2025

201-PARK FUND

REVENUES	CURRENT BUDGET	CURRENT PERIOD	PRIOR YEAR YDT ACTUAL	CURRENT YTD ACTUAL	BUDGET BALANCE	% YTD BUDGET
<u>INTERGOVERNMENTAL REV</u>						
201-33105 FEMA CFDA #97.036	0	1,073.08	0.00	1,252.92 (1,252.92)	0.00
201-33115 HOMELAND SECURITY-CFDA #97.067	0	0.00	0.00	0.00	0.00	0.00
201-33120 LWCF GRANT-CFDA #	98,500	0.00	0.00	0.00	98,500.00	0.00
201-33410 STATE OF SD-DOH (PREV&HEALTH)	40,000	1,197.50	12,564.04	4,634.03	35,365.97	11.59
201-33931 STATE OF SD-DISASTER ASSIST	0	0.00	0.00	0.00	0.00	0.00
201-33932 STATE OF SD-DOH (WEST NILE)	<u>14,000</u>	<u>0.00</u>	<u>0.00</u>	<u>0.00</u>	<u>14,000.00</u>	<u>0.00</u>
TOTAL INTERGOVERNMENTAL REV	152,500	2,270.58	12,564.04	5,886.95	146,613.05	96.14
<u>CHARGES-GOODS & SERVICES</u>						
201-34602 SWIMMING POOL	107,833	341.44	626.87	730.47	107,102.53	0.68
201-34603 RECREATION CENTER	562,100	64,770.80	172,587.64	190,970.63	371,129.37	33.97
201-34604 SWIM POOL-OTHER SALES	37,461	0.00	0.00	0.00	37,461.00	0.00
201-34605 REC CENTER-POOL	23,000	1,096.08	9,340.01	9,041.55	13,958.45	39.31
201-3462 CAPITAL IMPROVEMENT FEE	6,630	0.00	0.00	0.00	6,630.00	0.00
201-34622 MISC NON-TAXABLE FUNDS	0	0.00	0.00	0.00	0.00	0.00
201-3463 PLAYGROUNDS & ATHLETICS	73,300	0.00	2,011.96	0.00	73,300.00	0.00
201-34631 ADVERTISING REVENUE	0	0.00	0.00	0.00	0.00	0.00
201-346369REFUNDS AND REIMBURSEMENTS	6,249	25.00	5,671.64	86.00	6,163.00	1.38
201-3464 PARKS AND BOULEVARDS	25,000	3,324.92	8,872.60	8,570.24	16,429.76	34.28
201-3467 CADWELL SPORTS COMPLEX	50,400	0.00	0.00	841.03	49,558.97	1.67
201-3468 CADWELL CONCESSIONS	55,000	59.32	435.46	347.43	54,652.57	0.63
201-34690 ICE ARENA	<u>120,000</u>	<u>3,181.77</u>	<u>9,005.94</u>	<u>10,382.00</u>	<u>109,618.00</u>	<u>8.65</u>
TOTAL CHARGES-GOODS & SERVICES	1,066,973	72,799.33	208,552.12	220,969.35	846,003.65	79.29
<u>MISCELLANEOUS REVENUE</u>						
201-362 RENTALS-CAMP ARROYA	0	0.00	0.00	0.00	0.00	0.00
201-3622 RENTALS	0	0.00	0.00	0.00	0.00	0.00
201-3666 SDDOT-DRY RUN	0	0.00	0.00	0.00	0.00	0.00
201-367 P&A-CONTRIB FR/PRIVATE SOURCE	0	1,100.00	1,425.00	1,100.00 (1,100.00)	0.00
201-3671 PARK-CONTRIB FR/PRIVATE SOURCE	0	0.00	0.00	0.00	0.00	0.00
201-3672 REC-CONTRIB FROM PRIVATE SOURC	0	0.00	0.00	0.00	0.00	0.00
201-3673 CONT FR/PRIV SOURCE-UN WAY	3,000	0.00	0.00	0.00	3,000.00	0.00
201-3674 CONTR PRIV SRC-SANFORD	15,000	0.00	0.00	0.00	15,000.00	0.00
201-3675 CONTR PRIV SRC-CADWELL	0	0.00	0.00	0.00	0.00	0.00
201-3676 CITY CONTRIBUTION	9,000	0.00	0.00	0.00	9,000.00	0.00
201-3692 CREDIT CARD FEES	(12,200)	(943.51)	(2,071.68)	(2,366.46)	(9,833.54)	19.40
201-3698 HAYLAND LEASE	<u>1,732</u>	<u>0.00</u>	<u>0.00</u>	<u>0.00</u>	<u>1,732.00</u>	<u>0.00</u>
TOTAL MISCELLANEOUS REVENUE	16,532	156.49 (646.68)	(1,266.46)	17,798.46	107.66
TOTAL REVENUE	1,236,005	75,226.40	220,469.48	225,589.84	1,010,415.16	81.75

CITY OF MITCHELL
REVENUE & EXPENSE REPORT (UNAUDITED)

AS OF: MARCH 31ST, 2025

201-PARK FUND
RECREATION & AQUATICS

DEPARTMENTAL EXPENDITURES	CURRENT BUDGET	CURRENT PERIOD	PRIOR YEAR YDT ACTUAL	CURRENT YTD ACTUAL	BUDGET BALANCE	% YTD BUDGET
<u>SALARIES</u>						
201-45110-41100 SALARIES	179,378	13,502.30	38,555.82	40,506.91	138,871.09	22.58
201-45110-41110 OVERTIME	1,000	0.00	0.00	0.00	1,000.00	0.00
201-45110-41120 PART TIME-REC	35,671	341.45	2,697.61	958.26	34,712.74	2.69
201-45110-41125 PART TIME-AQUATICS	150,862	0.00	0.00	0.00	150,862.00	0.00
201-45110-41200 SOCIAL SECURITY/MEDICARE	28,069	995.75	2,966.48	2,981.93	25,087.07	10.62
201-45110-41300 RETIREMENT	10,823	810.14	2,313.36	2,430.42	8,392.58	22.46
201-45110-41500 GROUP INSURANCE	47,597	3,796.98	11,379.54	11,390.94	36,206.06	23.93
201-45110-41700 COMPENSATED ABSENCES	<u>0</u>	<u>0.00</u>	<u>0.00</u>	<u>0.00</u>	<u>0.00</u>	<u>0.00</u>
TOTAL SALARIES	453,400	19,446.62	57,912.81	58,268.46	395,131.54	87.15
<u>CURRENT EXPENSES</u>						
201-45110-42200 PROFESSIONAL FEES & SERV	2,600	0.00	650.00	520.00	2,080.00	20.00
201-45110-42250 PROGRAMMING SERVICES	16,000	0.00	0.00	0.00	16,000.00	0.00
201-45110-42300 PUBLISHING	4,500	0.00	0.00	0.00	4,500.00	0.00
201-45110-42350 PUBLISHING-AQUATICS	500	0.00	160.00	0.00	500.00	0.00
201-45110-42500 REPAIR & MAINTENANCE	9,000	0.00	0.00	0.00	9,000.00	0.00
201-45110-42550 REPAIR & MAINT-AQUATICS	0	0.00	0.00	0.00	0.00	0.00
201-45110-42600 SUPPLIES & MATERIALS	10,000	0.00	1,481.33	171.88	9,828.12	1.72
201-45110-42601 CONCESSION SUPPLIES	25,000	0.00	0.00	0.00	25,000.00	0.00
201-45110-42602 POOL CHEMICALS	45,000	0.00	0.00	0.00	45,000.00	0.00
201-45110-42605 SUPPLIES & MAT-AQUATICS	6,750	0.00	1,782.06	0.00	6,750.00	0.00
201-45110-42610 GAS & FUEL	0	0.00	0.00	0.00	0.00	0.00
201-45110-42650 UNIFORMS	500	0.00	0.00	0.00	500.00	0.00
201-45110-42693 COMPUTER SOFTWARE	4,000	0.00	3,472.87	3,646.52	353.48	91.16
201-45110-42695 COMP SOFTWARE-AQUATICS	4,000	0.00	3,472.88	3,646.52	353.48	91.16
201-45110-42700 TRAVEL, CONF. & DUES	0	0.00	0.00	0.00	0.00	0.00
201-45110-42750 TRAVEL, CONF, DUES-AQUAT	0	0.00	0.00	0.00	0.00	0.00
201-45110-42800 UTILITIES	400	2.75	3.85	5.69	394.31	1.42
201-45110-42850 UTILITIES-AQUATICS	84,000	1,022.19	1,064.26	1,022.19	82,977.81	1.22
201-45110-42999 REFUND OF FEES	<u>500</u>	<u>0.00</u>	<u>0.00</u>	<u>0.00</u>	<u>500.00</u>	<u>0.00</u>
TOTAL CURRENT EXPENSES	212,750	1,024.94	12,087.25	9,012.80	203,737.20	95.76
<u>CAPITAL OUTLAY</u>						
201-45110-43200 CAPITAL BUILDINGS	0	0.00	0.00	0.00	0.00	0.00
201-45110-43300 CAPITAL IMPROVEMENTS - O	0	0.00	0.00	0.00	0.00	0.00
201-45110-43400 CAPITAL EQUIPMENT	0	0.00	0.00	0.00	0.00	0.00
201-45110-43410 COMPUTER HARDWARE	0	0.00	0.00	0.00	0.00	0.00
201-45110-43421 VEHICLE	0	0.00	0.00	0.00	0.00	0.00
201-45110-43460 POOL EQUIPMENT	<u>0</u>	<u>0.00</u>	<u>0.00</u>	<u>0.00</u>	<u>0.00</u>	<u>0.00</u>
TOTAL CAPITAL OUTLAY	0	0.00	0.00	0.00	0.00	0.00
TOTAL RECREATION & AQUATICS	666,150	20,471.56	70,000.06	67,281.26	598,868.74	89.90
	=====	=====	=====	=====	=====	=====

CITY OF MITCHELL
REVENUE & EXPENSE REPORT (UNAUDITED)
AS OF: MARCH 31ST, 2025

201-PARK FUND
RECREATION CENTER

DEPARTMENTAL EXPENDITURES	CURRENT BUDGET	CURRENT PERIOD	PRIOR YEAR YDT ACTUAL	CURRENT YTD ACTUAL	BUDGET BALANCE	% YTD BUDGET
<u>SALARIES</u>						
201-45140-41100 SALARIES	322,518	17,580.14	68,770.09	55,502.81	267,015.19	17.21
201-45140-41110 OVERTIME	250	0.00	0.00	150.55	99.45	60.22
201-45140-41120 PART-TIME	230,983	19,580.65	57,869.40	57,167.53	173,815.47	24.75
201-45140-41200 SOCIAL SECURITY/MEDICARE	42,362	2,703.48	9,400.30	8,179.70	34,182.30	19.31
201-45140-41300 RETIREMENT	21,366	1,252.98	4,634.71	3,903.34	17,462.66	18.27
201-45140-41500 GROUP INSURANCE	109,498	9,835.96	26,045.85	30,605.37	78,892.63	27.95
201-45140-41700 COMPENSATED ABSENCES	<u>0</u>	<u>0.00</u>	<u>0.00</u>	<u>12,991.21</u>	<u>(12,991.21)</u>	<u>0.00</u>
TOTAL SALARIES	726,977	50,953.21	166,720.35	168,500.51	558,476.49	76.82
<u>CURRENT EXPENSES</u>						
201-45140-42200 PROFESSIONAL SERVICES	0	0.00	38.00	45.00	(45.00)	0.00
201-45140-42210 CONTRACT LABOR	0	0.00	0.00	0.00	0.00	0.00
201-45140-42250 PROGRAMMING SERVICES	0	0.00	0.00	0.00	0.00	0.00
201-45140-42300 PUBLISHING	46,500	3,440.00	13,284.87	12,526.00	33,974.00	26.94
201-45140-42400 LEASE-EXERCISE EQUIPMENT	0	0.00	0.00	0.00	0.00	0.00
201-45140-42500 REPAIR & MAINTENANCE	34,000	4,480.63	6,516.51	10,850.69	23,149.31	31.91
201-45140-42510 REC CENTER ROOFING	0	0.00	0.00	0.00	0.00	0.00
201-45140-42600 SUPPLIES & MATERIALS	35,027	2,834.48	5,773.49	7,433.50	27,593.50	21.22
201-45140-42601 CONCESSION SUPPLIES	15,000	348.14	4,383.67	2,925.53	12,074.47	19.50
201-45140-42602 CHEMICALS	18,000	4,240.98	3,223.02	4,360.98	13,639.02	24.23
201-45140-42610 GAS & FUEL	0	0.00	0.00	0.00	0.00	0.00
201-45140-42650 UNIFORMS	1,250	166.75	709.52	166.75	1,083.25	13.34
201-45140-42700 TRAVEL, CONF & DUES	1,500	130.00	130.00	273.37	1,226.63	18.22
201-45140-42800 UTILITIES	159,440	28,572.58	32,136.49	41,384.39	118,055.61	25.96
201-45140-42920 SOFTWARE	4,000	0.00	3,472.88	3,646.52	353.48	91.16
201-45140-42999 REFUNDS	<u>1,500</u>	<u>0.00</u>	<u>0.00</u>	<u>0.00</u>	<u>1,500.00</u>	<u>0.00</u>
TOTAL CURRENT EXPENSES	316,217	44,213.56	69,668.45	83,612.73	232,604.27	73.56
<u>CAPITAL OUTLAY</u>						
201-45140-43200 CAPITAL BUILDINGS	0	0.00	0.00	0.00	0.00	0.00
201-45140-43300 CAPITAL IMPROVEMENTS - O	20,000	0.00	87,440.90	20,143.20	(143.20)	100.72
201-45140-43400 CAPITAL EQUIPMENT	100,000	0.00	0.00	0.00	100,000.00	0.00
201-45140-43440 COMPUTER HARDWARE	<u>0</u>	<u>0.00</u>	<u>0.00</u>	<u>0.00</u>	<u>0.00</u>	<u>0.00</u>
TOTAL CAPITAL OUTLAY	120,000	0.00	87,440.90	20,143.20	99,856.80	83.21
TOTAL RECREATION CENTER	1,163,194	95,166.77	323,829.70	272,256.44	890,937.56	76.59
	=====	=====	=====	=====	=====	=====

CITY OF MITCHELL
REVENUE & EXPENSE REPORT (UNAUDITED)
AS OF: MARCH 31ST, 2025

201-PARK FUND
SPORTS COMPLEXES

DEPARTMENTAL EXPENDITURES	CURRENT BUDGET	CURRENT PERIOD	PRIOR YEAR YDT ACTUAL	CURRENT YTD ACTUAL	BUDGET BALANCE	% YTD BUDGET
<u>SALARIES</u>						
201-45160-41100 SALARIES	255,629	19,301.56	55,116.01	57,904.66	197,724.34	22.65
201-45160-41110 OVERTIME	4,000	0.00	1,454.76	232.04	3,767.96	5.80
201-45160-41120 PART-TIME	120,778	2,645.72	9,785.33	9,956.36	110,821.64	8.24
201-45160-41200 SOCIAL SECURITY/MEDICARE	29,101	1,617.54	4,962.77	5,040.90	24,060.10	17.32
201-45160-41300 RETIREMENT	15,578	1,158.10	3,394.20	3,488.22	12,089.78	22.39
201-45160-41500 GROUP INSURANCE	72,771	4,635.96	13,587.12	13,907.88	58,863.12	19.11
201-45160-41700 COMPENSATED ABSENCES	<u>0</u>	<u>0.00</u>	<u>0.00</u>	<u>0.00</u>	<u>0.00</u>	<u>0.00</u>
TOTAL SALARIES	497,857	29,358.88	88,300.19	90,530.06	407,326.94	81.82
<u>CURRENT EXPENSES</u>						
201-45160-42200 PROFESSIONAL SERVICES	201,200	0.00	0.00	0.00	201,200.00	0.00
201-45160-42500 REPAIR & MAINTENANCE	98,284	12,908.64	6,306.89	16,878.49	81,405.71	17.17
201-45160-42600 SUPPLIES & MATERIALS	54,400	1,378.16	1,434.61	3,617.67	50,782.33	6.65
201-45160-42602 CHEMICALS	22,000	0.00	0.00	0.00	22,000.00	0.00
201-45160-42603 SMALL EQUIPMENT	3,000	0.00	0.00	339.99	2,660.01	11.33
201-45160-42610 GAS & FUEL	15,000	327.75	1,178.55	1,137.00	13,863.00	7.58
201-45160-42650 UNIFORMS	1,400	89.99	0.00	146.22	1,253.78	10.44
201-45160-42700 TRAVEL, CONF & DUES	900	30.00	85.00	130.88	769.12	14.54
201-45160-42800 UTILITIES	<u>156,420</u>	<u>18,153.56</u>	<u>31,125.03</u>	<u>33,878.73</u>	<u>122,541.27</u>	<u>21.66</u>
TOTAL CURRENT EXPENSES	552,604	32,888.10	40,130.08	56,128.98	496,475.22	89.84
<u>CAPITAL OUTLAY</u>						
201-45160-43200 CAPITAL BUILDINGS	0	0.00	0.00	0.00	0.00	0.00
201-45160-43300 CAPITAL IMPROVEMENTS - O	278,000	0.00	28,416.13	0.00	278,000.00	0.00
201-45160-43310 CAPITAL IMPROV-CADWELL B	0	0.00	0.00	0.00	0.00	0.00
201-45160-43320 CAPITAL IMPROV-PRESS BOX	0	0.00	37,755.00	0.00	0.00	0.00
201-45160-43400 CAPITAL EQUIPMENT	<u>0</u>	<u>0.00</u>	<u>0.00</u>	<u>0.00</u>	<u>0.00</u>	<u>0.00</u>
TOTAL CAPITAL OUTLAY	278,000	0.00	66,171.13	0.00	278,000.00	100.00
TOTAL SPORTS COMPLEXES	1,328,461	62,246.98	194,601.40	146,659.04	1,181,802.16	88.96
	=====	=====	=====	=====	=====	=====

CITY OF MITCHELL
 REVENUE & EXPENSE REPORT (UNAUDITED)
 AS OF: MARCH 31ST, 2025

201-PARK FUND
 CADWELL CONCESSIONS

DEPARTMENTAL EXPENDITURES	CURRENT BUDGET	CURRENT PERIOD	PRIOR YEAR YTD ACTUAL	CURRENT YTD ACTUAL	BUDGET BALANCE	% YTD BUDGET
<u>SALARIES</u>						
201-45165-41110 OVERTIME	0	0.00	0.00	0.00	0.00	0.00
201-45165-41120 PART-TIME	13,284	0.00	0.00	0.00	13,284.00	0.00
201-45165-41200 SOCIAL SECURITY/MEDICARE	<u>1,016</u>	<u>0.00</u>	<u>0.00</u>	<u>0.00</u>	<u>1,016.00</u>	<u>0.00</u>
TOTAL SALARIES	14,300	0.00	0.00	0.00	14,300.00	100.00
<u>CURRENT EXPENSES</u>						
201-45165-42500 REPAIR & MAINTENANCE	1,000	0.00	0.00	0.00	1,000.00	0.00
201-45165-42600 SUPPLIES	1,000	0.00	0.00	0.00	1,000.00	0.00
201-45165-42610 COST OF GOODS SOLD	33,000	209.19	234.94	209.19	32,790.81	0.63
201-45165-42660 MINOR EQUIPMENT	<u>500</u>	<u>0.00</u>	<u>0.00</u>	<u>0.00</u>	<u>500.00</u>	<u>0.00</u>
TOTAL CURRENT EXPENSES	35,500	209.19	234.94	209.19	35,290.81	99.41
<u>CAPITAL OUTLAY</u>						
201-45165-43300 CAPITAL IMPROVEMENTS	<u>0</u>	<u>0.00</u>	<u>0.00</u>	<u>0.00</u>	<u>0.00</u>	<u>0.00</u>
TOTAL CAPITAL OUTLAY	0	0.00	0.00	0.00	0.00	0.00
 TOTAL CADWELL CONCESSIONS	 49,800	 209.19	 234.94	 209.19	 49,590.81	 99.58
	=====	=====	=====	=====	=====	=====

CITY OF MITCHELL
REVENUE & EXPENSE REPORT (UNAUDITED)
AS OF: MARCH 31ST, 2025

201-PARK FUND
PARKS

DEPARTMENTAL EXPENDITURES	CURRENT BUDGET	CURRENT PERIOD	PRIOR YEAR YDT ACTUAL	CURRENT YTD ACTUAL	BUDGET BALANCE	% YTD BUDGET
<u>SALARIES</u>						
201-45210-41100 SALARIES	369,746	27,889.26	81,195.28	83,577.05	286,168.95	22.60
201-45210-41110 OVERTIME	4,000	0.00	542.41	335.34	3,664.66	8.38
201-45210-41120 PART-TIME	143,404	0.00	0.00	0.00	143,404.00	0.00
201-45210-41200 SOCIAL SECURITY/MEDICARE	39,562	2,015.32	5,786.27	6,070.46	33,491.54	15.34
201-45210-41300 RETIREMENT	22,425	1,673.36	4,904.28	5,034.76	17,390.24	22.45
201-45210-41500 GROUP INSURANCE	161,060	10,296.04	39,003.62	30,888.12	130,171.88	19.18
201-45210-41700 COMPENSATED ABSENCES	<u>0</u>	<u>0.00</u>	<u>0.00</u>	<u>0.00</u>	<u>0.00</u>	<u>0.00</u>
TOTAL SALARIES	740,197	41,873.98	131,431.86	125,905.73	614,291.27	82.99
<u>CURRENT EXPENSES</u>						
201-45210-42200 PROFESSIONAL SERVICES	0	0.00	0.00	0.00	0.00	0.00
201-45210-42300 PUBLISHING	0	0.00	0.00	0.00	0.00	0.00
201-45210-42500 REPAIR & MAINTENANCE	88,080	4,360.85	12,663.72	5,460.34	82,619.66	6.20
201-45210-42520 VANDAL RESTITUTION REPAI	0	0.00	0.00	0.00	0.00	0.00
201-45210-42550 TESTING-LAKE MITCHELL	0	0.00	0.00	0.00	0.00	0.00
201-45210-42600 SUPPLIES & MATERIALS	90,300	2,462.75	3,842.47	5,604.89	84,695.11	6.21
201-45210-42602 CHEMICALS	6,000	0.00	0.00	0.00	6,000.00	0.00
201-45210-42604 TREES	3,000	0.00	0.00	0.00	3,000.00	0.00
201-45210-42605 COMMUNITY CHRISTMAS LIGH	0	0.00	0.00	0.00	0.00	0.00
201-45210-42610 GAS & FUEL	33,000	1,766.88	2,988.61	3,009.42	29,990.58	9.12
201-45210-42650 UNIFORMS	2,100	67.92	491.69	67.92	2,032.08	3.23
201-45210-42660 SMALL EQUIPMENT	2,500	0.00	0.00	0.00	2,500.00	0.00
201-45210-42690 CHANGE IN INVENTORY	0	0.00	0.00	0.00	0.00	0.00
201-45210-42700 TRAVEL, CONF. & DUES	1,800	0.00	289.38	101.75	1,698.25	5.65
201-45210-42800 UTILITIES	79,200	3,240.72	6,168.50	6,511.72	72,688.28	8.22
201-45210-42850 UTILITIES-VETERAN'S PARK	5,625	139.62	232.31	239.00	5,386.00	4.25
201-45210-42900 MOSQUITO PROGRAM	14,000	0.00	0.00	0.00	14,000.00	0.00
201-45210-42901 MSHA WEED SPRAYING	0	0.00	0.00	0.00	0.00	0.00
201-45210-42902 FIREWORKS CLEANUP	1,500	0.00	0.00	0.00	1,500.00	0.00
201-45210-42931 SALES TAX	<u>0</u>	<u>0.00</u>	<u>0.00</u>	<u>0.00</u>	<u>0.00</u>	<u>0.00</u>
TOTAL CURRENT EXPENSES	327,105	12,038.74	26,676.68	20,995.04	306,109.96	93.58
<u>CAPITAL OUTLAY</u>						
201-45210-43200 CAPITAL BUILDINGS	26,000	0.00	0.00	0.00	26,000.00	0.00
201-45210-43300 CAPITAL IMPROVEMENTS - O	281,000	6,607.50	0.00	11,586.25	269,413.75	4.12
201-45210-43309 LAKE MITCHELL DEVELOPMEN	0	0.00	0.00	0.00	0.00	0.00
201-45210-43400 CAPITAL EQUIPMENT	150,000	63,033.83	97,813.20	63,033.83	86,966.17	42.02
201-45210-43430 MOSQUITO PROGRAM CAPITAL	0	0.00	0.00	0.00	0.00	0.00
201-45210-43440 COMPUTER HARDWARE	<u>0</u>	<u>0.00</u>	<u>0.00</u>	<u>0.00</u>	<u>0.00</u>	<u>0.00</u>
TOTAL CAPITAL OUTLAY	457,000	69,641.33	97,813.20	74,620.08	382,379.92	83.67
TOTAL PARKS	1,524,302	123,554.05	255,921.74	221,520.85	1,302,781.15	85.47
	=====	=====	=====	=====	=====	=====

CITY OF MITCHELL
REVENUE & EXPENSE REPORT (UNAUDITED)
AS OF: MARCH 31ST, 2025

201-PARK FUND
SUPERVISION

DEPARTMENTAL EXPENDITURES	CURRENT BUDGET	CURRENT PERIOD	PRIOR YEAR YDT ACTUAL	CURRENT YTD ACTUAL	BUDGET BALANCE	% YTD BUDGET
<u>SALARIES</u>						
201-45220-41100 SALARIES	163,989	8,836.20	38,580.17	26,508.60	137,480.40	16.16
201-45220-41110 OVERTIME	200	0.00	0.00	0.00	200.00	0.00
201-45220-41120 PART-TIME	0	0.00	0.00	0.00	0.00	0.00
201-45220-41200 SOCIAL SECURITY/MEDICARE	12,560	618.76	2,782.45	1,874.48	10,685.52	14.92
201-45220-41300 RETIREMENT	9,851	530.18	2,314.82	1,590.54	8,260.46	16.15
201-45220-41500 GROUP INSURANCE	46,884	2,698.57	11,379.54	8,095.71	38,788.29	17.27
201-45220-41700 COMPENSATED ABSENCES	<u>0</u>	<u>0.00</u>	<u>0.00</u>	<u>0.00</u>	<u>0.00</u>	<u>0.00</u>
TOTAL SALARIES	233,484	12,683.71	55,056.98	38,069.33	195,414.67	83.70
<u>CURRENT EXPENSES</u>						
201-45220-42100 INSURANCE	103,628	115.62	113,888.42	19,352.62	84,275.38	18.68
201-45220-42200 PROFESSIONAL SERVICES	0	0.00	0.00	0.00	0.00	0.00
201-45220-42300 PUBLISHING	0	0.00	0.00	0.00	0.00	0.00
201-45220-42500 REPAIR & MAINTENANCE	0	0.00	0.00	0.00	0.00	0.00
201-45220-42600 SUPPLIES & MATERIALS	900	5.00	183.00	5.00	895.00	0.56
201-45220-42650 UNIFORMS	500	0.00	0.00	0.00	500.00	0.00
201-45220-42700 TRAVEL, CONF. & DUES	2,675	0.00	0.00	0.00	2,675.00	0.00
201-45220-42800 UTILITIES	640	50.14	95.58	98.70	541.30	15.42
201-45220-42920 COMPUTER SOFTWARE	<u>0</u>	<u>0.00</u>	<u>0.00</u>	<u>0.00</u>	<u>0.00</u>	<u>0.00</u>
TOTAL CURRENT EXPENSES	108,343	170.76	114,167.00	19,456.32	88,886.68	82.04
<u>CAPITAL OUTLAY</u>						
201-45220-43200 CAPITAL BUILDINGS	0	0.00	0.00	0.00	0.00	0.00
201-45220-43300 CAPITAL IMPROVE-OTHER	0	0.00	0.00	0.00	0.00	0.00
201-45220-43400 CAPITAL EQUIPMENT	<u>0</u>	<u>0.00</u>	<u>0.00</u>	<u>0.00</u>	<u>0.00</u>	<u>0.00</u>
TOTAL CAPITAL OUTLAY	0	0.00	0.00	0.00	0.00	0.00
TOTAL SUPERVISION	341,827	12,854.47	169,223.98	57,525.65	284,301.35	83.17
=====						
TOTAL EXPENDITURES	5,073,734	314,503.02	1,013,811.82	765,452.43	4,308,281.77	84.91
=====						
REVENUE OVER/(UNDER) EXPENDITURES	(3,837,729)	(239,276.62)	(793,342.34)	(539,862.59)	(3,297,866.61)	85.93
=====						
<u>OTHER FINANCING SOURCES</u>						
201-3900 FROM GENERAL FUND	3,735,493	0.00	2,930,000.00	0.00	3,735,493.00	0.00
201-3901 FROM DEBT SERVICE-INDOOR POOL	0	0.00	0.00	0.00	0.00	0.00
201-39104 DAMAGE/LOSS REIMB-CAPIT ASSETS	0	0.00	0.00	0.00	0.00	0.00
201-39131 SALE OF CAPITAL ASSETS	0	0.00	0.00	0.00	0.00	0.00
201-3920 TRANSFER IN	<u>0</u>	<u>0.00</u>	<u>0.00</u>	<u>0.00</u>	<u>0.00</u>	<u>0.00</u>
TOTAL OTHER FINANCING SOURCES	3,735,493	0.00	2,930,000.00	0.00	3,735,493.00	100.00

CITY OF MITCHELL
 REVENUE & EXPENSE REPORT (UNAUDITED)
 AS OF: MARCH 31ST, 2025

201-PARK FUND
 SUPERVISION

DEPARTMENTAL EXPENDITURES	CURRENT BUDGET	CURRENT PERIOD	PRIOR YEAR YTD ACTUAL	CURRENT YTD ACTUAL	BUDGET BALANCE	% YTD BUDGET
<u>OTHER FINANCING USES</u>						
201-49000-51100 TRAN OUT TO	<u>0</u>	<u>0.00</u>	<u>0.00</u>	<u>0.00</u>	<u>0.00</u>	<u>0.00</u>
TOTAL OTHER USES	0	0.00	0.00	0.00	0.00	0.00

REVENUES & OTHER SOURCES OVER (UNDER) EXPENDITURES & OTHER (USES)	(102,236)	(239,276.62)	2,136,657.66	(539,862.59)	437,626.39	428.05-
--	------------	---------------	--------------	---------------	------------	---------

Kevin DeVries:

Programs:

Coed volleyball wrapped up its on March 9. Men's League basketball will be ending its season on April 9. Both seasons were very successful.

Jamie conducted a lifeguard training class for 11 Mitchell students March 28-30. They all passed and will be working for us this summer. She has a few more lined up for another class as well so we are closing in on the goal of 20 new guards. We will also be having one more session of indoor lessons towards the end of April.

The summer brochure is out. We got them to the schools on April 1 and it is also on our website. Online registration will start Monday, April 14 at 8:00 am.

We will be finalizing summer staff and setting up staff meeting this month and early May.

We will be having our outdoor aquatic center family pool pass sale May 5-11. You can purchase a family pass that week for \$125.77.

Recreation Center:

We held our annual Rob Marchand Memorial basketball tournament on March 8. We had 34 teams signed up and played on 8 courts at DWU, Mitchell Middle School and Mitchell Senior High. Had great weather and a great turnout. Want to thank Jason Christenson for his help with lining up officials and also Jim Johnston from Harve's Pro Prints for donating the championship T-shirts for each division.

We continue to stay very busy at the Rec Center. Our membership is over 3,700 members currently and daily check-ins are up 4,850 more than last year through the first 3 months of the year for a total of 28116 so far.

We have finalized our plans for the indoor playground that will be a part of our youth room. It will be a 16x16x11 ft structure that will hold 25-30 youth ages 2-8. It should be installed the first week of June. There will be scheduled times and guidelines for the room, which I will discuss in our meeting. A paid day pass or membership will be required for admit.

Lastly, I would like to let you know that this will be my last board meeting as I will be retiring on May 14. It has been my honor to work for the Parks & Recreation Department for the last 31 years and will miss all the great people I've worked with and have met over the years.

I'd like to congratulate Thomas Gullede who will be replacing me and also Adam Fosness who has moved to a coordinator position. I'm excited to see them and the rest of our staff succeed in the future.

We will be hiring for the other open coordinator position within the month as well as a new personal trainer.

Jeremy:

Ice Arena:

- April 3rd was last team practice. 3v3/skills going on Mondays and Thursdays until April 24.
- Figure skating had their spring show April 5. Will keep normal practices until April 29.

- Men's league Tournament April 11-13. 22 teams and 38 games. 2 Wisconsin, 2 Sioux City, 2 Aberdeen, 2 Huron, 5 Sioux Falls, 4 Mitchell, Watertown, Fargo, Minneapolis, Windom and Pierre.
- We stopped open skate on M, W and Th because of lack of numbers. Will still do open skate on Fridays and open skate/bumper cars on Saturdays and Sunday until the end of the season.
- We will start to take logos out and shave ice on May 1.
- Still cleaning and doing ice maintenance.

Cadwell:

- DWU baseball and softball going on. Few games cancelled or moved due to weather.
- Mitchell baseball has started practice. First home game is April 17.
- Mitchell softball has started. First home game was April 5.
- Travel teams have started practicing. 19 travel team contacts with some coaches having multiple teams.
- Mitchell Aces amateur team scheduled 8 home games.
- Early Bird tournament scheduled for May 3.
- Slow pitch softball will start first part of May.
- Staff has been putting out garbage cans, putting up backstop pads, working over fields, putting out bases at Cadwell and park fields. We will be putting up sun shades in the next couple weeks. Turning on bathrooms and mowing when the weather gets a little better.

Soccer:

- MSA started April 7th. I believe it will be around the same number of players as last year.
- We painted fields and got nets on the goals. We placed garbage cans and activated the water in the bathrooms.
- MSA will have a tournament in June.

Steve:

Parks:

- Put up the tennis nets. Tennis practice started March 17th
- Put out trash cans in the parks and around the lake
- Put up the volleyball nets at Day Camp, Camp Arroya and Patton Young
- Made some repairs to the West End Boat Dock and put back in the water
- Started cleaning up landscape beds staff worked on areas in Hitchcock and Northridge and will be working downtown next
- Street tree trimming we got the area south of the railroad tracks to Havens and from Burr to the Bypass done
- Cleaning up around the Campground
- Cleaning up in the parks
- Painted the inside door at Patton Young Park shelter

- Hiring seasonal staff
- Had rain gutters installed on Day Camp and Sportsman's
- Construction for the Pickleball courts have begun, we had to remove some trees, got our main irrigation trunkline and irrigation in that area removed. The contractor got the top soil removed and clay hauled in

Director Nelson:

Park-Located Children's Story Board - Discussion and Approval

Info is included in the packet. The plan would be to install along both sides of the mid-park sidewalk that leads from Anderson Street to the park shelter.

Arena Roof

All are awaiting the information from the structural engineer, so that a plan of attack can be formulated for a long-term fix for the arena roof.

Trail Grant Application

The application was completed and then submitted on April 2. It'll be a number of weeks before we hear back from GFP. However, they'll (likely) be scheduling a site visit prior to making a selection of the recipients of this round of funding.

Playground (LWCF) Grant Application

We're currently working on this application to apply for matching funding to replace the playground at Jennewein Park, which would then be installed in 2027. At present, we're in the mode of garnering letters of support and a signed parent petition. We also need to do calculations on the limited work that we'd need to arrange (concrete curbing, etc.).

Pontoon Rental Rates and Related Time Frames

Pontoon rental rates were established and approved by the park board in 2024, and they were based upon the (non)availability of campground hosts to assist in this process. New campground hosts have been hired on for this summer, and they understand that renting, prepping, and inspecting the pontoon will be a part of their duties. Thus, the board will be asked to approve some modified rates and related times at the April Park Board meeting.

Campground Call Center

Our contracted campground call center has been accepting campground calls on our behalf for nearly three weeks, as of the date of this report. No issues to report to date. Also, the first two weeks were free, but calls, according to the call log (that I can access), were limited.

Pickleball Courts

Work began a couple of weeks back and is presently being hampered by wet weather. Note: We'll not be adding the post tension option for the concrete, as was determined by city council several weeks back.

Parks Shelter Rental Rates

I was requested by the park board at a recent park board meeting to bring back for discussion 'park shelter rental rates.' The current rates for shelter rentals are \$55 (plus sales tax = \$58.58)/day for non-enclosed shelters, and \$110 (plus sales tax = \$117.15)/day for enclosed shelters.

Total shelter rentals in 2024 were as follows:

Patton Young:	47	
Day Camp:	38	
Northridge/Kibbee/North/Bandshell (combined total):	51	
Hitchcock Enclosed:	39	
Monroe Gardens:	9	
Munroe Shelter: (enclosed at a non-enclosed rate*)	6	(*due to more primitive shelter)
South/Southwest/Pioneer/Kiwanis:	27	
Sportsman's Club:	20	
Camp Arroya:	21	
Total Paid Rentals:	258	Total Revenue: \$25,029.63

Parks and Recreation Master Planning - Future

We'll be discussing the need for an updated plan at the April board meeting.

Department Position Openings: Full-Time

Two of the three position openings in the Parks department that were posted by HR in March have been filled, as follows:

Recreation Superintendent: The position being vacated by Kevin DeVries, upon his retirement on May 14, will be filled by Thomas Gulledge, a current long-time recreation coordinator in a fitness role at the Rec Center. Thomas will begin his superintendent duties on May 26.

Recreation Coordinator: The position vacated by Todd Cavanaugh upon his retirement earlier in the year has been filled by Adam Fosness, a current long-time Personal Trainer at the Rec. Adam has substantial experience working with youth as both a trainer and a coach. Adam began his new duties this past week.

The position being vacated by Adam, that of full-time personal trainer, is now posted and open. Adam (and Thomas) will continue providing coverage for this position until it is filled.

The position of parks specialist remains open and posted at this time.

Thomas' current position, that of recreation coordinator (related to fitness), will be posted in the near future.

Arbor Day

We have an Arbor Day Ceremony/Declaration and Tree Planting scheduled for 10:00 a.m. on Friday, April 25 (on what is recognized as National Arbor Day) at Kiwanis Woodlot Park. Bring your shovel and rake, if you are willing to assist in planting several trees that morning.

Web Site Issue with Outdated Documents Being Visible to the Public

We discovered an issue with the city web site this week, in that web users were able to access previous rate sheets for various items (for instance: Fun Passes for the Rec Center/Lakeview) and subsequently might request to receive different rates. After much, much searching, we discovered that documents were being inadvertently stored in a file that someone shouldn't have had access to, and most of us were the not authorized (or able) to remove or delete them. The problem has since been rectified.

In preparation for our meeting, Kiwanis members had the opportunity to see a Storywalk at the Madison Library. The info I received from their club president was as follows:

StoryWalk Solutions:

We neither purchased designer panels nor used tag boards. But I think the idea of tag boards is closest to what you mean. We create our own and laminate them.

The cost (without labor or materials for installation) was a little less than \$5,000. It was higher than the first price I gave to the Kiwanis (2? years ago) because they raised their prices, included shipping, and we decided to go with aluminum posts. Wooden posts are an option.

So:

-StoryWalk Solutions

-\$5000

-16 signs

-aluminum mount

-angled view

-Librarian made StoryWalk (we would be happy to walk any group through our process)

-Parks donated installation and installation materials

This is the link to the company they used:

<https://bdexhibits.com/storywalk-solutions/>

StoryWalk® Solutions - Barking Dog Exhibits
bdexhibits.com

Julie HS





Barking Dog Interpretive Design
 S12824 County Road U
 Strum, WI 54770
 United States of America
 storywalk@bdexhibits.com

QUOTE # SW25915551

Quote expires 2025-05-03

[Click here to place your order](#)

Julie Hart Schutte
 Kiwanis Club of Mitchell
 25641 408th Ave
 Mitchell, South Dakota
 57301-5845
 Jahsheart67@gmail.com

Ship to:

 City of Mitchell
 City Hall
 Mitchell, South Dakota
 57301

Quote Date: **2025-04-03**
 Payment Method: **Quote**
 Shipping Estimate #: 25-177997

PRODUCT	UNIT	QTY	PRICE
Angled Aluminum Surface Mount (SWPWP-1824S-45B)	\$337.92	20	\$6,758.40
		Subtotal	\$6,758.40
		Volume Discount	\$-675.84
		Shipping	\$460.00
		Total	\$6,542.56

TEMPORARY PAGE DISPLAY SUGGESTION: Use 10 mil hot laminate to encase the book page/printed page, include an 1/8" edge of clear laminate on all 4 sides of the page. Place page and colored backer between the 2 sheets of acrylic, install into the frame. During seasons with high humidity or rain, condensation or moisture may occur inside the frame. Synthetic paper and permanent panels will offer greater durability than laminated pages.

Terms: With signed quote, 50% down at time of order, Net 10 after shipment. With purchase order, Net 30 after shipment.

 Signature

 Date



StoryWalk® Solutions

ALUMINUM FRAME with SURFACE MOUNT
ALUMINUM POST-ANGLED

•Designed for an 18”H x 24”W page, with a viewable area of 17”H x 23”W

•45 Degree display angle

•Standard post length of 40” for surface mount installation

- Longer post lengths available
- In-ground installation aluminum posts available

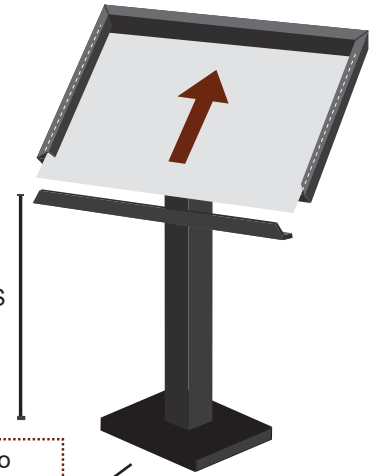
•Removable bottom rail for easy page insertion

•Two sheets of acrylic protect the laminated page

•3 Year Warranty on the powder-coated aluminum frame and post.

•Made in the USA

SIGN PANEL MOUNTS
28-32” FROM GRADE



Install the posts to your surface according to area recommendations. Seek a local professional to determine the correct installation hardware for your surface. If installing to a concrete pad, you will need to know the thickness of the pad to correctly select hardware.

Assembly Instructions:

1. Attach the frame to the post plate using the provided hardware and allen driver. You will need a 7/16” socket wrench to install the nylock nut. DO NOT use power tools as the stainless hardware may gall and seize.
2. Remove the 2 screws from the bottom frame rail with the provided allen driver.
3. Insert the acrylic sheets and replace the bottom rail.

Page Installation Instructions - First time

1. Remove the bottom frame rail using the provided allen driver
2. Remove the blue masking from both sides of the acrylic sheets.
3. Place your page and optional colored backer between the sheets of acrylic.
4. Slide the sheets into the frame bottom.
5. Replace the bottom rail.

Moisture Issue? Add 2 or 3 Clip Spacers to the bottom of your page to minimize water from creeping up between the acrylic sheets. It creates a larger gap; therefore, moisture will not be drawn between the sheets as easily. Clip spacers are small, plastic paper clips that are sold under the brand Plastiklips LP-0200.



Cleaning Instructions:

- Use a soft cloth and a diluted soap & water solution to wash the display.
- Dry the display with a soft cloth.
- DO NOT USE ammonia cleaners (Windex) or paper towels as they may damage the acrylic.

CITY of Mitchell—Lake Mitchell Campground

PONTOON RENTAL AGREEMENT



Note: Renter must be a minimum of 25 years of age to rent the pontoon.

Renter Name: _____ Renter Phone #: _____

Renter Address: _____
Street City State Zip Code

Renter Email: _____ Renter DL # and State: _____

Attach photocopy of Renter's current auto insurance card: Insurance carrier (company): _____

Rental Period: _____ Time Window: _____
Day of Week Month/Date/Year (earliest 7:00 a.m. — pontoon must be returned a minimum of 30 minutes prior to sunset)

Rentals are available seven days a week. A minimum of a 4-hour block is required on Saturdays, Sundays, and National Holidays.

Note: All rental fees are non-refundable.

Renter is renting the following equipment:

Amount

Weekend (Saturday, Sunday, National Holiday) Pontoon: \$75/hour (minimum 4-hour block)

Weekday Pontoon: \$75/hour (minimum 1-hour block)

Deposit Fee: \$200

Additional Fees (to be determined by City upon return):

Late: \$100/hour _____

Cleaning: \$40/hour (for cleaning needed beyond what City deems reasonable and/or normal)

Gas (one tank of gas is included with the rental—gas remaining in the pontoon gas tank at the end of rental will remain the property of the City)

Life Jackets: (use of one for each passenger plus a throwable is included in the rental)

Damages or lost items (itemize): _____

Taxes and Fees (Sales Tax)

Less Deposit (if not needed to cover any additional expenses)

Total Due (payment accepted by credit card or debit card only — no cash or checks)

Renter hereby agrees to the following terms and conditions in consideration of the rental described above:

- Inspection of Equipment.** Except as stated on this rental agreement, the boat, motor, and all other rented equipment are in good mechanical and physical condition. Any known damage or problems will be listed on this rental agreement. Renter will inspect the boat and rented equipment prior to use and, by taking possession of such boat and equipment, does thereby agree and confirm that such items are in good mechanical and physical condition. If the boat or equipment have damage or problems not listed on this agreement, Renter must notify City prior to taking possession of such boat and equipment. Any damage or problems with the boat and equipment which are not listed on this agreement, and which Renter fails to identify to City prior to Renter taking possession of the boat and equipment, shall be presumed to be caused by Renter.
- Damage to Equipment.** Renter acknowledges and understands that boat and equipment is to be left in clean, undamaged condition, in the same condition at commencement of the rental period, normal wear and tear excepted. Renter shall report any accident, damage, or equipment failure which Renter is aware of upon return of the boat to City. City will inspect the boat and equipment upon return and before the boat and equipment is rented to another renter. If the boat and equipment is not left in suitable condition, Renter acknowledges and understands that City reserves the right to charge Renter for any repairs or special cleaning. Additionally, Renter understands and agrees that City reserves the right to charge for any damages, repairs, replacement, or special cleaning of any damaged or lost real or personal property. Renter acknowledges, understands, and agrees that by signing this agreement, Renter is authorizing City to charge Renter for any damages sustained. Such charges will be charged to the credit card on file for the rental.
- Recovery of Costs.** Renter shall be responsible to pay City for any and all costs, fees, expenses, etc., which City may incur in relation to this agreement including, but not limited to, all costs incurred in collecting delinquent payments, all costs incurred in a suit by City to recover possession of the watercraft and equipment subject to this agreement, and/or any suit by City to enforce any provision, term, or condition of this agreement. If the boat and equipment are not returned on time, and in addition to any other fees provided for in this agreement, Renter agrees to pay the cost for any towing or search and rescue necessary to recover the boat and equipment; however, no such costs shall apply in the case of mechanical failure beyond the control of the Renter. Furthermore, Renter shall be responsible for compensating City for, in addition to other damages specified in this agreement, any lost income for any boat or equipment downtime arising out of Renter's use of the boat and equipment pursuant to this agreement which renders such boat or equipment inoperable, non-functional, or otherwise unable to be further rented. Furthermore, Renter shall be responsible for compensating City for, in addition to other damages specified in this agreement, any lost income for any boat or equipment downtime arising out of Renter's use of the boat and equipment pursuant to this agreement which renders such boat or equipment inoperable, non-functional, or otherwise unable to be further rented.

4. **Prohibited Activities.** The following activities are not permitted on the boat. Violation of this provision will result in the immediate termination of this contract and forfeiture of all monies paid by the Renter, including the full amount due, and any applicable fees or damages, for the rental regardless how much time is remaining on the rental.
 - a. Smoking;
 - b. Operating the boat while intoxicated;
 - c. Operating in a manner inconsistent with the boat safety manual; and
 - d. Allowing more people on the boat than what the boat is rated for.

5. **Renter Warranties and Representations.** Renter represents and warrants the following:
 - a. That Renter acknowledges all laws governing operation of the boat and that Renter will comply with the laws and regulations at all times;
 - b. That Renter is adequately familiar with the operation of the boat;
 - c. That Renter will operate the boat in a safe manner at all times;
 - d. The Renter understands the operation of the boat involves risks and that Renter assumes all liability associated with the operation of the boat;
 - e. That Renter shall be responsible for any other person operating the boat with Renter's permission and there shall be a presumption that any other person operating the boat has Renter's permission; and
 - f. That Renter has reviewed the rental boat safety manual.
 - g. Renter acknowledges that City shall not be responsible for damages arising from the unavailability of the boat or equipment due to the failure of a prior renter to return the boat and equipment on time or due to any other reason beyond City's control.

6. **Release and Waiver of Claims.** Renter does hereby remise, release, and forever discharge City, City's agents, servants, successors, heirs, executors, administrators, and personal representatives, of and from all, and all manner of, actions, causes of action, suits, proceedings, debts, dues, contracts, judgments, damages, claims, and demands whatsoever in law or equity, which Renter ever had, now has, or which Renter's heirs, executors, administrators, or personal representatives hereafter can, shall, or may have for or by reason of any matter, cause, or thing whatsoever arising out of this agreement; out of the use (misuse, or abuse) of the boat and equipment; or in any way arising out of the rental relationship between Renter and City. It is further acknowledged and agreed that City shall not be held liable for damages, inconvenience, or time lost caused by accident, breakdown, or malfunction of the boat or equipment.

7. **Indemnification.** Renter hereby expressly agrees to indemnify and hold harmless City, City's agents, servants, successors, heirs, executors, administrators, and personal representatives against all suits, actions, claims, demands, or damages that arise out of Renter's use, misuse, or abuse of the boat.

8. **Cancellation Policy.** If Renter cancels their reservation within 7 calendar days of the reservation, Renter shall forfeit the deposit. City reserves the right to cancel this agreement due to impending or occurring inclement weather. If the cancellation occurs before the rental begins due to inclement weather, then the deposit will be applied to an alternate date.

9. **Life Jackets.** Renter must ensure that one properly sized life jacket is on board for every person on board. Any person under the age of 13 must wear a life jacket at all times while on the boat. All persons must wear life jackets while swimming from the boat. All passengers must be present at time of rental to be properly fitted for life jackets.

10. **Governing Law.** This agreement is governed, construed, and administered according to the laws of South Dakota regardless of any choice-of-law or conflict-of-law provision or rule that would cause the application of the law of any jurisdiction other than those of the State of South Dakota. Any dispute arising out of this agreement shall be venued in the First Judicial Circuit Court of the State of South Dakota in Davison County, South Dakota, which court shall have exclusive jurisdiction for all purposes.

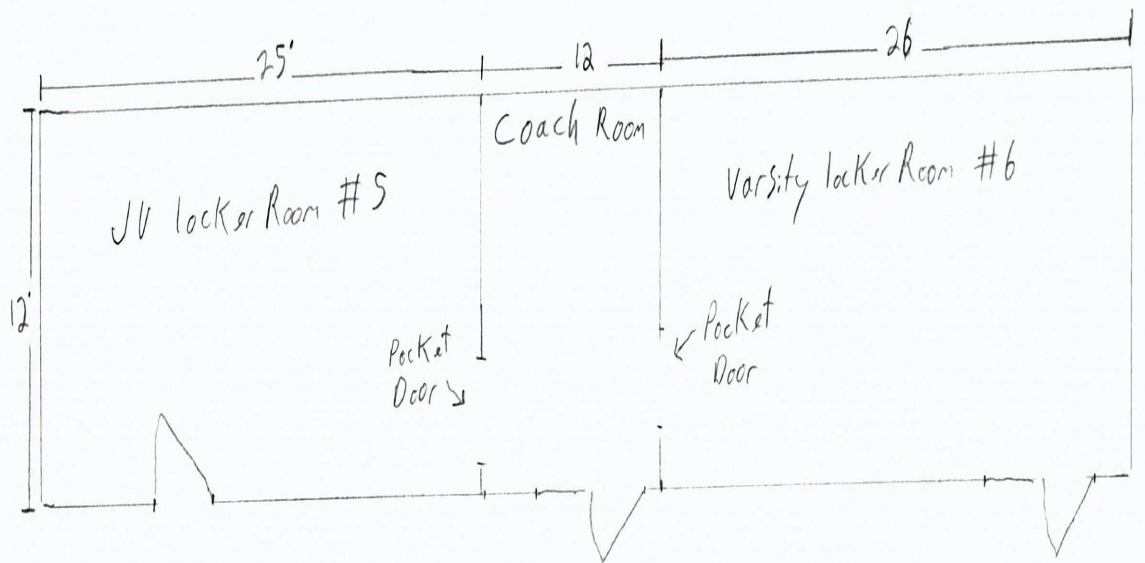
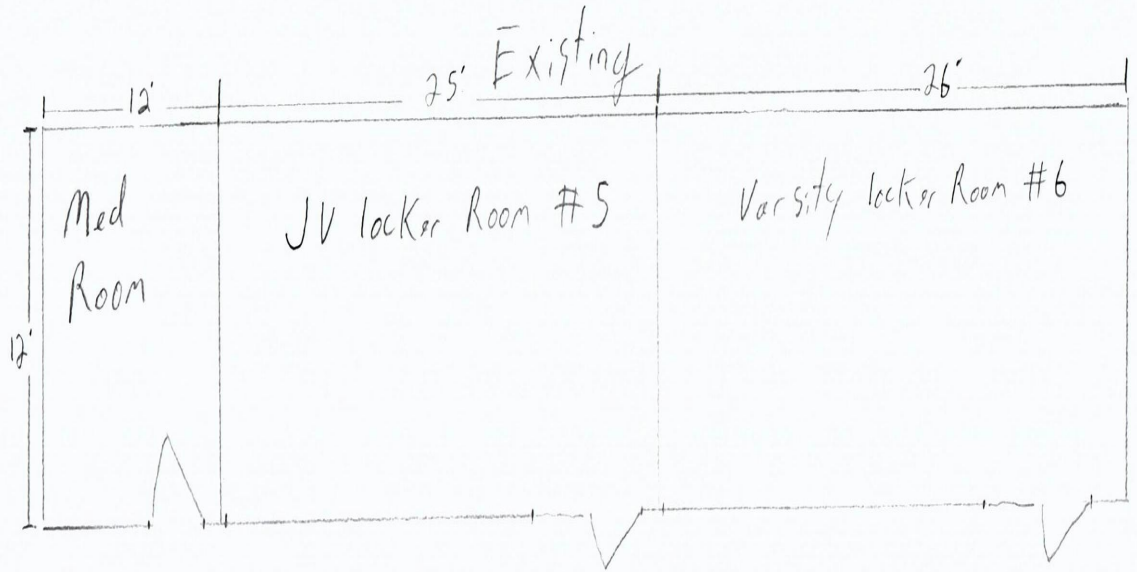
11. **Entire Agreement.** This agreement constitutes the sole and entire agreement of its parties with respect to the agreement's subject matter. This agreement supersedes all prior and contemporaneous understandings, agreements, representations, and warranties with respect to the subject matter. As between or among the parties, oral statements or prior written material not specifically incorporated in this agreement have no force or effect. The parties specifically acknowledge that, in entering into and executing this agreement, each is relying solely upon the representations and agreements contained in this agreement and no others.

Renter (individuals must be a minimum of 25 years of age to rent or operate the pontoon)

_____ Dated: _____
 Renter's Signature

City of Mitchell
 _____ Dated: _____
 Authorized Representative

Scale 1/8"



Rink