



Park and Recreation Board Agenda
City Council Chambers, City Hall, 612 N. Main Street
March 12, 2026

- 1. 6:00 PM Call to Order**
- 2. Citizen's Input**
If you need to address the board on an item that was not on the agenda, excluding personnel items, please come forward to the podium and state your name and your concern. Presentations are limited to three minutes. Items will be considered but no action will be taken at this time.
- 3. Delegations**
- 4. Additions or Deletions / Approve Agenda**
- 5. Approve Minutes from February 19 Meeting**
- 6. Approve Financial Reports**
- 7. Department Reports**
- 8. Approve Vending Structure to be Constructed within Cadwell Stadium**
- 9. Approve moving a section of stadium fence along the south side toward the west end. This is the section that is directly south of the grandstand, along 13th Avenue. If it is deemed necessary, the intent is to move this section to the south along or near the property line. Doing such would require the removal of one or two existing trees, an ash and/or a maple.**
- 10. Approve Mitchell Tennis Association Agreement for 2026**
- 11. Approve Girl Scouts Troop Proposal for Making Minor Improvements at the Dog Park**
- 12. Adjournment**
- 13. Next Meeting Date: Thursday, April 9**

Individuals with disabilities who require special assistance to take part in this meeting may contact one of the following at City Hall (605) 995-8420 at least 24 hours prior to the meeting with requests for assistance: Human Resources Officer or the City Administrator.

**Parks & Recreation Board Meeting Minutes
City Council Chambers, City Hall, 612 N. Main Street
February 19, 2026**

Present: Dennis Thompson, Luke Norden, Adam Schulz, Shaun Davis, Ed Goff, Patrick McGeough, and council liaison Dan Sabers

Absent: Bryce Berletic

Staff Present: Kevin Nelson, Thomas Gullede, Steve, Roth, and Roger Prewett

1. Call to Order

The meeting was called to order by Norden at 6:00pm.

2. First was the oath of office for Patrick McGeough given by Kevin Nelson

3. Citizen's Input: None

4. Delegations: None

5. Additions or Deletions Approve Agenda

No additions or deletions. Motion was made by Schulz and seconded by Davis to approve the agenda. Motion carried.

6. Approve Minutes

Minutes of the January 8, 2026 regular meeting were reviewed. Motion by Schulz and seconded by Goff to approve as reviewed. Motion carried.

7. Approve Financial Reports

The December and January financials were reviewed. Motion by Goff and seconded by Schulz to approve as reviewed. Motion carried.

8. Department Reports

Department managerial staff provided brief overviews of their written reports.

9. Approve 2025-2026 MFSHA Facility use Agreement

Motion was made by Norden and seconded by Davis to approve the agreement. Motion carried.

10. Approve Sports Complex and Arena Charges for 2026

Motion was made by Norden and seconded by Schulz to approve the agreement with the following amendments: 1) Change the rate of charge for Cadwell Field to \$200/game (for non-Mitchell teams); 2) Change the rate of charge for tourney staff (at non-Drake/non-Cadwell games) to \$40/staff person/game for the first game and then \$20/staff person/game thereafter (then add these fees to the spreadsheet of fees). Motion carried. It was also added that the board would like to re-visit these fees charged for tournament staff later in the year.

11. Approve DWU (Drake) Concession Stand Agreement for 2026

Motion was made by Goff and seconded by Schulz to approve the agreement. Motion carried

12. Approve PCBA Drake Concession Stand Agreement for 2026

Motion by Goff and seconded by Schulz to approve as reviewed. Motion carried.

Outside expectations

13. Approve Concessions Stand Use Agreement for Soccer Complex for 2026

Motion by Norden and seconded by Thompson to approve as reviewed. Motion carried.

14. Approve Mitchell Soccer Amendment to Sales at Soccer Complex for 2026

Motion by Norden and seconded by Schulz to approve as reviewed. Motion carried.

15. Approve Concessions Stand Lease at Cadwell Stadium for Exchange Club for 2026-2035

Motion by Schulz and seconded by Goff to approve as reviewed. Five voted in favor with Thomson opposed. Motion carried.

16. Approve Mitchell Baseball Association Agreement for 2026

Motion by Goff and seconded by Thompson to approve as reviewed. Motion carried.

17. Approve Mitchell Soccer Association Agreement for 2026

Motion by Goff and seconded by Thompson to approve as reviewed. Motion carried.

18. Approve Palace City Baseball Association Agreement for 2026

Motion by Schulz and seconded by Thompson to approve as reviewed. Motion carried.

19. Approve Palace City Youth Football Agreement for 2026

Motion by Schulz and seconded by Norden to approve as reviewed. Motion carried.

20. Approve Adult Softball Agreement for 2026

Motion by Goff and seconded by Schulz to approve as reviewed. Motion carried.

21. Approve Travel Team Agreement for 2026

Motion by Goff and seconded by Schulz to approve as reviewed. Motion carried.

22. Discussion on Possible Rec Center Discount for Park Board Members

Motion by Norden and seconded by Goff to approve a 40 percent discount toward a single Rec center annual membership. Three voted in favor, and two were opposed (Davis had left early). Motion carried

23. Next Meeting Date: It was determined that the next monthly board meeting would be held on Thursday, March 12 at 6:00pm.

24. Adjournment: There being no further business, the board meeting adjourned at 7:45pm.

PACKET : 07696 07697 07698 07699

VENDOR SET: Mult

FUND : 619 CAMPGROUND

DEPARTMENT: 5220 CAMPGROUND

BANK: Multi

BUDGET TO USE: CB-CURRENT BUDGET

VENDOR	NAME	ITEM #	G/L ACCOUNT NAME	DESCRIPTION	CHECK#	AMOUNT
--------	------	--------	------------------	-------------	--------	--------

01-01830 NORTHWESTERN ENERGY

I-3394102-2.01.26	619-45220-42800	UTILITIES	2601 N MAIN ST	210330	588.27
I-3394130-3.01.26	619-45220-42800	UTILITIES	2601 N MAIN ST TRLR	210330	7.00
I-3988458-0.01.26	619-45220-42800	UTILITIES	2601 N MAIN ST SHWR	210330	12.00

01-06750 MITCHELL TELECOM

I-11134334	619-45220-42800	UTILITIES	ACCT #00026238-4	210325	77.95
------------	-----------------	-----------	------------------	--------	-------

01-09665 CITY OF MITCHELL

I-02022026	619-45220-43200	BUILDINGS	SEA CAMPGROUND HOTEL TAX	210257	326.00
------------	-----------------	-----------	--------------------------	--------	--------

DEPARTMENT 5220 CAMPGROUND TOTAL: 1,011.22

FUND 619 CAMPGROUND TOTAL: 1,011.22

PACKET: 07705 CREDIT CARDS 02.19.2026

VENDOR SET: 01

FUND : 619 CAMPGROUND

DEPARTMENT: 5220 CAMPGROUND

BANK: APENK

BUDGET TO USE: CB-CURRENT BUDGET

VENDOR	NAME	ITEM #	G/L ACCOUNT NAME	DESCRIPTION	CHECK#	AMOUNT
01-07141	FIRST NATIONAL BANK OMA					
		I-02062026.7022	619-45220-42620	COMPUTER SOFT JAN 2026 RESERVATION FEES	210371	1,346.00
		I-02062026.7022	619-45220-42620	COMPUTER SOFT JAN 2026 RESERVATION FEES	210371	160.06
		I-02062026.7022	619-45220-42620	COMPUTER SOFT JAN 2026 RESERVATION FEES	210371	31.60
DEPARTMENT 5220 CAMPGROUND					TOTAL:	1,537.66
FUND 619 CAMPGROUND					TOTAL:	1,537.66

PACKET : 07710 07711 07712 07713

VENDOR SET: Mult

FUND : 619 CAMPGROUND

DEPARTMENT: 5220 CAMPGROUND

BANK: Multi

BUDGET TO USE: CB-CURRENT BUDGET

VENDOR	NAME	ITEM #	G/L ACCOUNT NAME	DESCRIPTION	CHECK#	AMOUNT
01-03498	COLUMN SOFTWARE PEC	I-35882B15-0292	619-45220-42300	ADVERTISING/P TORNADO SHELTER PUBLIC NOTICE	210429	55.82
DEPARTMENT 5220 CAMPGROUND					TOTAL:	55.82
FUND 619 CAMPGROUND					TOTAL:	55.82

PACKET : 07696 07697 07698 07699

VENDOR SET: Mult

FUND : 201 PARK FUND

DEPARTMENT: 5110 RECREATION & AQUATICS

BANK: Multi

BUDGET TO USE: CB-CURRENT BUDGET

VENDOR	NAME	ITEM #	G/L ACCOUNT NAME	DESCRIPTION	CHECK#	AMOUNT
01-06750	MITCHELL TELECOM					
		I-11132274	201-45110-42800 UTILITIES	ACCT #00223662-2	210325	0.93
DEPARTMENT 5110 RECREATION & AQUATICS TOTAL:						0.93

PACKET : 07696 07697 07698 07699

VENDOR SET: Mult

FUND : 201 PARK FUND

DEPARTMENT: 5140 RECREATION CENTER

BANK: Mult

BUDGET TO USE: CB-CURRENT BUDGET

VENDOR	NAME	ITEM #	G/L ACCOUNT NAME	DESCRIPTION	CHECK#	AMOUNT
=====						
01-00424	RUNNINGS SUPPLY INC					
		I-2212688	201-45140-42600	SUPPLIES & MA INFLATOR BARE	210347	199.00
PROJ:	J06-SM-EQUIP		REC CTR-GENERAL BLDG	SUPPLIES/MATERIAL-EQUIPMENT		
01-01497	GRAINGER					
		I-9791617021	201-45140-42600	SUPPLIES & MA AIR FILTER	210290	158.48
PROJ:	J06-SM-HVAC		REC CTR-GENERAL BLDG	SUPPLIES/MATERIAL-HVAC		
		I-9791813448	201-45140-42600	SUPPLIES & MA AIR FILTER	210290	79.24
PROJ:	J06-SM-HVAC		REC CTR-GENERAL BLDG	SUPPLIES/MATERIAL-HVAC		
		I-9791885552	201-45140-42600	SUPPLIES & MA BATTERY	210290	220.96
PROJ:	J06-SM-HVAC		REC CTR-GENERAL BLDG	SUPPLIES/MATERIAL-HVAC		
01-01830	NORTHWESTERN ENERGY					
		I-2580493-1.01.26	201-45140-42800	UTILITIES 1300 N MAIN	210330	3,753.20
PROJ:	J09-ELE/GAS		REC CTR UTILITIES	UTILITIES-ELECTRIC/GAS		
01-02560	PEPSI COLA COMPANY					
		I-97834784	201-45140-42601	CONCESSION SU SUPPLIES	210338	335.01
PROJ:	J05-CONC SUP		REC CTR CONCESSIONS	CONCESSION SUPPLY		
		I-97835070	201-45140-42601	CONCESSION SU SUPPLIES	210338	368.29
PROJ:	J05-CONC SUP		REC CTR CONCESSIONS	CONCESSION SUPPLY		
01-02602	PUBLIC HEALTH LABORATOR					
		I-10625154	201-45140-42602	CHEMICALS LAB TESTINS	210342	120.00
PROJ:	J02-CHEMICAL		INDOOR AQUATIC CTR	CHEMICALS		
01-02790	SUN GOLD SPORTS LLC					
		I-36980	201-45140-42600	SUPPLIES & MA LOGO ON SHIRT	210360	20.00
PROJ:	J06-SM-OFFIC		REC CTR-GENERAL BLDG	SUPPLIES/MATERIAL-OFFICE		
01-02880	THUNE TRUE VALUE & APPL					
		I-A611987	201-45140-42600	SUPPLIES & MA TFE PASTE	210365	6.49
PROJ:	J06-SM-PLUMB		REC CTR-GENERAL BLDG	SUPPLIES/MATERIAL-PLUMBING		
		I-A612002	201-45140-42600	SUPPLIES & MA ADAPTER ELBOW	210365	5.26
PROJ:	J06-SM-PLUMB		REC CTR-GENERAL BLDG	SUPPLIES/MATERIAL-PLUMBING		
		I-B313202	201-45140-42600	SUPPLIES & MA 3/4 90 DEG ST ELBOW	210365	20.28
PROJ:	J06-SM-PLUMB		REC CTR-GENERAL BLDG	SUPPLIES/MATERIAL-PLUMBING		
01-03700	CORE-MARK US LLC					
		I-2539061	201-45140-42601	CONCESSION SU CANDY CAKE COOKIES	210263	1,559.31
PROJ:	J05-CONC SUP		REC CTR CONCESSIONS	CONCESSION SUPPLY		
01-04950	MIDCONTINENT COMMUNICAT					
		I-BIL-571411	201-45140-42300	PUBLISHING ADVERTISING	210318	246.00
PROJ:	J08-MIDCO		REC CTR PUBLISHING	PUBLISHING-MIDCO		
		I-BIL-571412	201-45140-42300	PUBLISHING ADVERTISING	210318	441.00
PROJ:	J08-MIDCO		REC CTR PUBLISHING	PUBLISHING-MIDCO		
		I-BIL-571663	201-45140-42300	PUBLISHING ADVERTISING	210318	300.00
PROJ:	J08-MIDCO		REC CTR PUBLISHING	PUBLISHING-MIDCO		

PACKET : 07696 07697 07698 07699

VENDOR SET: Mult

FUND : 201 PARK FUND

DEPARTMENT: 5140 RECREATION CENTER

BANK: Multi

BUDGET TO USE: CB-CURRENT BUDGET

VENDOR	NAME	ITEM #	G/L ACCOUNT NAME	DESCRIPTION	CHECK#	AMOUNT
=====						
01-04950	MIDCONTINENT COMMUNICAT	continued				
	I-BIL-571668		201-45140-42300	PUBLISHING ADVERTISING	210318	300.00
PROJ:	J08-MIDCO	REC CTR PUBLISHING		PUBLISHING-MIDCO		
	I-BIL-571673		201-45140-42300	PUBLISHING ADVERTISING	210318	200.00
PROJ:	J08-MIDCO	REC CTR PUBLISHING		PUBLISHING-MIDCO		
	I-BIL-571826		201-45140-42300	PUBLISHING ADVERTISING	210318	93.75
PROJ:	J08-MIDCO	REC CTR PUBLISHING		PUBLISHING-MIDCO		
	I-BIL-571894		201-45140-42300	PUBLISHING ADVERTISING	210318	70.00
PROJ:	J08-MIDCO	REC CTR PUBLISHING		PUBLISHING-MIDCO		
	I-BIL-571895		201-45140-42300	PUBLISHING ADVERTISING	210318	756.00
PROJ:	J08-MIDCO	REC CTR PUBLISHING		PUBLISHING-MIDCO		
	I-BIL-572670		201-45140-42300	PUBLISHING ADVERTISING	210318	38.47
PROJ:	J08-MIDCO	REC CTR PUBLISHING		PUBLISHING-MIDCO		
	I-BIL-573193		201-45140-42300	PUBLISHING ADVERTISING	210318	70.00
PROJ:	J08-MIDCO	REC CTR PUBLISHING		PUBLISHING-MIDCO		
01-07716	SAGA COMMUNICATIONS OF					
	I-MC-12601112995		201-45140-42300	PUBLISHING ADVERTISING	210349	594.00
PROJ:	J08-KMIT	REC CTR PUBLISHING		PUBLISHING-KMIT		
01-08594	MAKE IT MINE DESIGNS					
	I-46853		201-45140-42600	SUPPLIES & MA LEFT CHEST LOGO	210313	10.00
PROJ:	J06-SM-OFFIC	REC CTR-GENERAL BLDG		SUPPLIES/MATERIAL-OFFICE		
	I-46853		201-45140-42650	UNIFORMS LEFT CHEST LOGO	210313	15.00
PROJ:	J10-ADAM	REC CTR UNIFORMS		UNIFORMS-ADAM		
	I-46887		201-45140-42600	SUPPLIES & MA LAMINATE	210313	90.00
PROJ:	J06-SM-EQUIP	REC CTR-GENERAL BLDG		SUPPLIES/MATERIAL-EQUIPMENT		
	I-46959		201-45140-42650	UNIFORMS UNDER ARMOUR	210313	97.30
PROJ:	J10-CHRIS	REC CTR UNIFORMS		UNIFORMS-CHRIS		
	I-46959		201-45140-42650	UNIFORMS UNDER ARMOUR	210313	60.00
PROJ:	J10-THOMAS	REC CTR UNIFORMS		UNIFORMS-THOMAS		
	I-46959		201-45140-42600	SUPPLIES & MA UNDER ARMOUR	210313	201.80
PROJ:	J06-SM-OFFIC	REC CTR-GENERAL BLDG		SUPPLIES/MATERIAL-OFFICE		
01-09143	ICAN INC					
	I-132033		201-45140-42300	PUBLISHING 150 ADVERTISING SPOTS	210300	250.00
PROJ:	J08-ICAN	REC CTR PUBLISHING		PUBLISHING-ICAN		
	I-132034		201-45140-42300	PUBLISHING ONLINE DIGITAL ADVERTISING	210300	500.00
PROJ:	J08-ICAN	REC CTR PUBLISHING		PUBLISHING-ICAN		
01-09633	STAPLES					
	I-6054242958		201-45140-42600	SUPPLIES & MA TISSUE	210357	52.85
PROJ:	J06-SM-JANIT	REC CTR-GENERAL BLDG		SUPPLIES/MATERIAL-JANITORIAL		
01-09703	AMAZON CAPITAL SERVICES					
	I-136L-J4GH-VMT4		201-45140-42600	SUPPLIES & MA OFFICE CHAIR	000050	94.99
PROJ:	J06-SM-OFFIC	REC CTR-GENERAL BLDG		SUPPLIES/MATERIAL-OFFICE		
	I-13MX-PP3D-CJQQ		201-45140-42601	CONCESSION SU AUTO PARTS	000050	143.58
PROJ:	J05-CONC SUP	REC CTR CONCESSIONS		CONCESSION SUPPLY		

PACKET : 07696 07697 07698 07699

VENDOR SET: Mult

FUND : 201 PARK FUND

DEPARTMENT: 5140 RECREATION CENTER

BANK: Mult

BUDGET TO USE: CB-CURRENT BUDGET

VENDOR	NAME	ITEM #	G/L ACCOUNT NAME	DESCRIPTION	CHECK#	AMOUNT
--------	------	--------	------------------	-------------	--------	--------

01-09703 AMAZON CAPITAL SERVICES continued

	I-1K4Q-99FR-LQWY		201-45140-42600	SUPPLIES & MA NUTELLA,WALL CLOCK	000050	9.98
PROJ:	J06-SM-BLDG	REC CTR-GENERAL BLDG		SUPPLIES/MATERIAL-BLDG		
	I-1K4Q-99FR-LQWY		201-45140-42601	CONCESSION SU NUTELLA,WALL CLOCK	000050	92.20
PROJ:	J05-CONC SUP	REC CTR CONCESSIONS		CONCESSION SUPPLY		
	I-1TKV-GW1N-HRXN		201-45140-42601	CONCESSION SU CANDY	000050	39.72
PROJ:	J05-CONC SUP	REC CTR CONCESSIONS		CONCESSION SUPPLY		

01-09959 ASSOCIATED POOL BUILDER

	I-202648		201-45140-43400	CAPITAL EQUIP REC CENTER RECIRCULATING PUMP	210238	11,730.57
--	----------	--	-----------------	---	--------	-----------

DEPARTMENT 5140 RECREATION CENTER TOTAL: 23,342.73

PACKET : 07696 07697 07698 07699

VENDOR SET: Mult

FUND : 201 PARK FUND

DEPARTMENT: 5160 SPORTS COMPLEXES

BANK: Mult

BUDGET TO USE: CB-CURRENT BUDGET

VENDOR	NAME	ITEM #	G/L ACCOUNT NAME	DESCRIPTION	CHECK#	AMOUNT
=====						
01-00008	ELFSTRAND'S ACE HARDWAR					
		I-70129	201-45160-42600	SUPPLIES & MA MISC FASTENERS	210280	19.71
	PROJ: H01-42600	SPORTS COMPLEX EQUIPMENT		SUPPLIES/MAINTENANCE		
01-00424	RUNNINGS SUPPLY INC					
		I-2210215	201-45160-42600	SUPPLIES & MA TAPE MEASURE,BOLTS,NUTS,WASHRS	210347	66.79
	PROJ: H01-42600	SPORTS COMPLEX EQUIPMENT		SUPPLIES/MAINTENANCE		
01-00436	CHS INC					
		I-IG6473	201-45160-42610	GAS & FUEL HOCKEY LP BOTTLE FILL	210255	78.00
	PROJ: H01-42610	SPORTS COMPLEX EQUIPMENT		GAS-FUEL		
		I-IG6588	201-45160-42610	GAS & FUEL LP BOTTLE FILL CYLINDER FILL	210255	130.00
	PROJ: H01-42610	SPORTS COMPLEX EQUIPMENT		GAS-FUEL		
01-01199	STURDEVANTS AUTO VALUE					
		I-815069260	201-45160-42600	SUPPLIES & MA HD OIL FARM,AIR CONSTRUCTION	210358	97.96
	PROJ: H01-42600	SPORTS COMPLEX EQUIPMENT		SUPPLIES/MAINTENANCE		
		I-815069266	201-45160-42600	SUPPLIES & MA HD AIR CONSTRUCTION	210358	31.47
	PROJ: H01-42600	SPORTS COMPLEX EQUIPMENT		SUPPLIES/MAINTENANCE		
		I-815069287	201-45160-42600	SUPPLIES & MA SPARK PLUG,FUEL FILTER,ENGINE	210358	106.87
	PROJ: H01-42600	SPORTS COMPLEX EQUIPMENT		SUPPLIES/MAINTENANCE		
		I-815069935	201-45160-42600	SUPPLIES & MA GENERAL PURPOSE,HD OIL FARM	210358	37.53
	PROJ: H01-42600	SPORTS COMPLEX EQUIPMENT		SUPPLIES/MAINTENANCE		
01-01404	MITCHELL IRON & SUPPLY					
		I-87802	201-45160-42500	REPAIR & MAIN HEX NUT,REPLACE SLEEVES	210323	303.90
	PROJ: H01-42500	SPORTS COMPLEX EQUIPMENT		REPAIR/MAINTENANCE		
01-01830	NORTHWESTERN ENERGY					
		I-2991007-2.01.26	201-45160-42800	UTILITIES 1001 N MINNESOTA GMTR	210330	1,641.02
	PROJ: H13-42800	ARENA-SOUTH RINK	UTILITIES			
01-02679	MENARD'S INC					
		I-99563	201-45160-42600	SUPPLIES & MA DURACELL PACK,THERMOSTAT	210316	23.61
	PROJ: H13-42600	ARENA-SOUTH RINK	SUPPLIES-MAINTENANCE			
01-02811	JONES SUPPLIES					
		I-155768	201-45160-42600	SUPPLIES & MA CHAMPION SPRAY,TOWEL DISPENSER	210308	134.75
	PROJ: H06-42600	ARENA-NORTH RINK	SUPPLIES-MATERIALS			
01-02880	THUNE TRUE VALUE & APPL					
		I-A612257	201-45160-42600	SUPPLIES & MA LITHIUM BATTERY	210365	15.99
	PROJ: H01-42600	SPORTS COMPLEX EQUIPMENT		SUPPLIES/MAINTENANCE		
01-07423	DESIGNARC GROUP					
		I-2026-21 P.E.#1	201-45160-43300	CAPITAL IMPRO 2026-21 P.E.#1	210276	20,520.00

DEPARTMENT 5160 SPORTS COMPLEXES TOTAL: 23,207.60

PACKET : 07696 07697 07698 07699

VENDOR SET: Mult

FUND : 201 PARK FUND

DEPARTMENT: 5210 PARKS

BANK: Multi

BUDGET TO USE: CB-CURRENT BUDGET

VENDOR	NAME	ITEM #	G/L ACCOUNT NAME	DESCRIPTION	CHECK#	AMOUNT
=====						
01-00008	ELFSTRAND'S ACE HARDWAR					
		I-72024	201-45210-42600	SUPPLIES & MA GUIDE BAR	210280	59.99
	PROJ: H51-42600	PARK SHOP		SUPPLIES/MATERIALS		
01-00424	RUNNINGS SUPPLY INC					
		I-2210740	201-45210-42600	SUPPLIES & MA PLIERS,SNIPS,SPARK PLUG	210347	47.55
	PROJ: H51-42600	PARK SHOP		SUPPLIES/MATERIALS		
		I-2212024	201-45210-42600	SUPPLIES & MA OIL AIR COMPRESSOR	210347	21.18
	PROJ: H51-42600	PARK SHOP		SUPPLIES/MATERIALS		
		I-2212687	201-45210-42600	SUPPLIES & MA SHEET METAL SCREW PAN	210347	57.54
	PROJ: H51-42600	PARK SHOP		SUPPLIES/MATERIALS		
		I-2213228	201-45210-42600	SUPPLIES & MA PAINT BRUSH HOSE	210347	19.98
	PROJ: H51-42600	PARK SHOP		SUPPLIES/MATERIALS		
		I-2213268	201-45210-42600	SUPPLIES & MA HOSE PIPE	210347	9.78
	PROJ: H51-42600	PARK SHOP		SUPPLIES/MATERIALS		
		I-2215313	201-45210-42600	SUPPLIES & MA BAR OIL STIHL GALLON	210347	96.96
	PROJ: H51-42600	PARK SHOP		SUPPLIES/MATERIALS		
		I-2215323	201-45210-42600	SUPPLIES & MA BIN PRODUCTS	210347	15.90
	PROJ: H51-42600	PARK SHOP		SUPPLIES/MATERIALS		
01-00532	A-OX WELDING SUPPLY CO					
		I-0000343863	201-45210-42600	SUPPLIES & MA CYLINDER	210234	107.46
	PROJ: H51-42600	PARK SHOP		SUPPLIES/MATERIALS		
01-01199	STURDEVANTS AUTO VALUE					
		I-815069915	201-45210-42500	REPAIR & MAIN BIG RANGE BELT FILTER,OIL FILT	210358	25.04
	PROJ: H50-42500	PARKS EQUIPMENT		REPAIR/MAINTENANCE		
		I-815069996	201-45210-42500	REPAIR & MAIN LAWN/GARDEN APPLCTR,CONVENT	210358	94.14
	PROJ: H50-42500	PARKS EQUIPMENT		REPAIR/MAINTENANCE		
		I-815070197	201-45210-42500	REPAIR & MAIN OIL FILTERS	210358	400.78
	PROJ: H50-42500	PARKS EQUIPMENT		REPAIR/MAINTENANCE		
01-01404	MITCHELL IRON & SUPPLY					
		I-87817	201-45210-42500	REPAIR & MAIN O RING	210323	6.00
	PROJ: H50-42500	PARKS EQUIPMENT		REPAIR/MAINTENANCE		
01-01830	NORTHWESTERN ENERGY					
		I-2580826-2.01.26	201-45210-42800	UTILITIES 800 E 11TH AVE	210330	12.06
	PROJ: H60-42800	NORTHRIDGE PARK		UTILITIES		
		I-2581610-9.01.26	201-45210-42800	UTILITIES PUBLIC BEACH	210330	57.23
	PROJ: H74-42800	PUBLIC BEACH		UTILITIES		
		I-2581648-9.01.26	201-45210-42800	UTILITIES ACCESS LOT LITE	210330	12.06
	PROJ: H79-42800	LAKE PARK ACCESS AREAS		UTILITIES		
		I-2581649-7.01.26	201-45210-42800	UTILITIES DAY CAMP	210330	54.54
	PROJ: H67-42800	DAY CAMP		UTILITIES		
		I-2582639-7.01.26	201-45210-42800	UTILITIES PATTON YOUNG	210330	136.42
	PROJ: H87-42800	PATTON YOUNG		UTILITIES		
		I-2583204-9.01.26	201-45210-42800	UTILITIES 1201 S MINNESOTA PARK JENNEWEL	210330	20.49
	PROJ: H58-42800	JENNEWEL PARK		UTILITIES		

PACKET : 07696 07697 07698 07699

VENDOR SET: Mult

FUND : 201 PARK FUND

DEPARTMENT: 5210 PARKS

BANK: Mult

BUDGET TO USE: CB-CURRENT BUDGET

VENDOR	NAME	ITEM #	G/L ACCOUNT NAME	DESCRIPTION	CHECK#	AMOUNT
=====						
01-01830	NORTHWESTERN ENERGY		continued			
		I-2584325-01.01.26	201-45210-42800	UTILITIES 1300 S ROWLEY ST PARK PIONEER	210330	18.34
PROJ:	H61-42800	PIONEER PARK		UTILITIES		
		I-2584526-4.01.26	201-45210-42500	REPAIR & MAIN DRY RUN RESTROOM 20	210330	12.00
PROJ:	H55-42800	DRY RUN CREEK PARK		UTILITIES		
		I-3045799-8.01.26	201-45210-42800	UTILITIES 311 1/2 N HARMON	210330	58.08
PROJ:	H66-42800	CAMP ARROYA		UTILITIES		
		I-3328555-2.01.26	201-45210-42800	UTILITIES 425 S BURR	210330	89.53
PROJ:	H55-42800	DRY RUN CREEK PARK		UTILITIES		
		I-3600484-4.01.26	201-45210-42800	UTILITIES 745 N HARMON DR RSTA	210330	25.98
PROJ:	H76-42800	SANDY BEACH		UTILITIES		
		I-3975325-6.01.26	201-45210-42800	UTILITIES 612 W ASH AVE	210330	58.78
PROJ:	H55-42800	DRY RUN CREEK PARK		UTILITIES		
		I-4345227-5.01.26	201-45210-42800	UTILITIES JETTY PARKING LOT	210330	93.60
PROJ:	H78-42800	WEST END BOAT LAUNCH		UTILITIES		
01-01944	PFEIFER IMPLEMENT CO IN					
		I-01-206402	201-45210-42500	REPAIR & MAIN LIGHT WORK LED	210340	268.39
PROJ:	H50-42500	PARKS EQUIPMENT		REPAIR/MAINTENANCE		
01-02551	DAKOTA RIGGERS & TOOL S					
		I-3055215	201-45210-42600	SUPPLIES & MA PRO STOP LANYARD HARNESS	210268	525.01
PROJ:	H51-42600	PARK SHOP		SUPPLIES/MATERIALS		
01-02679	MENARD'S INC					
		I-99850	201-45210-42600	SUPPLIES & MA TOOL BAG	210316	306.89
PROJ:	H51-42600	PARK SHOP		SUPPLIES/MATERIALS		
01-08014	VERN EIDE CHEVROLET GMC					
		I-15046002	201-45210-42500	REPAIR & MAIN SOLENOID	210368	132.92
PROJ:	H50-42500	PARKS EQUIPMENT		REPAIR/MAINTENANCE		
01-09703	AMAZON CAPITAL SERVICES					
		I-1QMY-RCMH-99X9	201-45210-42600	SUPPLIES & MA TENNIS NETS	000050	1,296.16
PROJ:	H56-42600	HITCHCOCK PARK		SUPPLIES/MATERIALS		
		I-1YVP-YC3W-KR3N	201-45210-42600	SUPPLIES & MA BATTERY,AIR FILTER	000050	133.22
PROJ:	H51-42600	PARK SHOP		SUPPLIES/MATERIALS		
DEPARTMENT 5210 PARKS					TOTAL:	4,274.00

FUND 201 PARK FUND					TOTAL:	50,825.26

PACKET: 07705 CREDIT CARDS 02.19.2026

VENDOR SET: 01

FUND : 201 PARK FUND

DEPARTMENT: 5110 RECREATION & AQUATICS

BANK: APBNK

BUDGET TO USE: CE-CURRENT BUDGET

VENDOR	NAME	ITEM #	G/L ACCOUNT NAME	DESCRIPTION	CHECK#	AMOUNT
01-07141	FIRST NATIONAL BANK OMA					
		I-02062026.0011	201-45110-42200	PROFESSIONAL RED CROSS LIFE GAUARDING RECERT	210371	670.00
	PROJ: J51-PROF FEE	P&A YOUTH PROGRAMS		RED CROSS FEES		
				DEPARTMENT 5110 RECREATION & AQUATICS	TOTAL:	670.00

PACKET: 07705 CREDIT CARDS 02.19.2026

VENDOR SET: 01

FUND : 201 PARK FUND

DEPARTMENT: 5140 RECREATION CENTER

BANK: ABENE

BUDGET TO USE: CB-CURRENT BUDGET

VENDOR	NAME	ITEM #	G/L ACCOUNT NAME	DESCRIPTION	CHECK#	AMOUNT
01-01930	NORTHWESTERN ENERGY					
		I-2773861-6.02.26	201-45140-42800	UTILITIES 1300 N MAIN ST UNIT 15	210376	7,005.29
	PROJ: J09-ELE/GAS	REC CTR UTILITIES		UTILITIES-ELECTRIC/GAS		
		I-3510842-2.02.26	201-45140-42800	UTILITIES 1300 N MAIN BLDG AQUATICS	210376	4,933.68
	PROJ: J09-ELE/GAS	REC CTR UTILITIES		UTILITIES-ELECTRIC/GAS		
01-06750	MITCHELL TELECOM					
		I-11136241	201-45140-42800	UTILITIES ACCT #00037690-1	210375	121.65
	PROJ: J09-TV	REC CTR UTILITIES		UTILITIES-TV		
01-07141	FIRST NATIONAL BANK OMA					
		I-02062026.0011	201-45140-42602	CHEMICALS WATER TEST KITS	210371	301.86
	PROJ: J02-CHEMICAL	INDOOR AQUATIC CTR		CHEMICALS		
		I-02062026.7726	201-45140-42600	SUPPLIES & MA NETS,BASKETBALLS	210371	335.60
	PROJ: J02-SM-EQUIP	INDOOR AQUATIC CTR		SUPPLIES/MATERIAL-EQUIPMENT		
		I-02062026.7726	201-45140-42601	CONCESSION SU BUBBLRS	210371	56.00
	PROJ: J05-CONC SUP	REC CTR CONCESSIONS		CONCESSION SUPPLY		
		I-02062026.7726	201-45140-42602	CHEMICALS POSTAGE STAMPS	210371	17.40
	PROJ: J02-SM-OFFIC	INDOOR AQUATIC CTR		SUPPLIES/MATERIALS-OFFICE		
		I-02062026.7726	201-45140-42600	SUPPLIES & MA BATH TOWELS	210371	317.45
	PROJ: J06-SM-BLDG	REC CTR-GENERAL BLDG		SUPPLIES/MATERIAL-BLDG		
DEPARTMENT 5140 RECREATION CENTER					TOTAL:	13,088.93

PACKET: 07705 CREDIT CARDS 02.19.2026

VENDOR SET: 01

FUND : 201 PARK FUND

DEPARTMENT: 5160 SPORTS COMPLEXES

BANK: APBNK

BUDGET TO USE: CB-CURRENT BUDGET

VENDOR	NAME	ITEM #	G/L ACCOUNT NAME	DESCRIPTION	CHECK#	AMOUNT
01-01518	VERIZON WIRELESS					
		I-6134721459	201-45160-42800	UTILITIES ACCT #286931646-00001	210384	39.73
01-01930	NORTHWESTERN ENERGY					
		I-2579265-6.01.26	201-45160-42800	UTILITIES 1101 N EDMUNDS FWSP M SELTR	210376	30.26
PROJ: H10-42800	MUNROE PARK			UTILITIES		
		I-2585121-3.01.26	201-45160-42800	UTILITIES 313 N HARMON DR	210376	120.09
PROJ: H07-42800	PEPSI COMPLEX			UTILITIES		
		I-2586408-3.01.26	201-45160-42800	UTILITIES JOURNEY HDQT	210376	24.67
PROJ: H02-42800	CADWELL STADIUM			UTILITIES		
		I-2586410-9.01.26	201-45160-42800	UTILITIES 1301 N MINNESOTA LIFT	210376	19.65
PROJ: H03-42800	OLD SOCCER FIELDS			UTILITIES		
		I-2718054-6.01.26	201-45160-42800	UTILITIES 5825 TOWER RD	210376	923.39
PROJ: H07-42800	PEPSI COMPLEX			UTILITIES		
		I-2787244-9.01.26	201-45160-42800	UTILITIES D E CONCESSION	210376	13.49
PROJ: H05-42800	SOFTBALL			UTILITIES		
		I-2787247-2.01.26	201-45160-42800	UTILITIES WEST ELEC D E	210376	31.42
PROJ: H05-42800	SOFTBALL			UTILITIES		
		I-2787248-0.01.26	201-45160-42800	UTILITIES WEST ELEC F G	210376	83.60
PROJ: H05-42800	SOFTBALL			UTILITIES		
		I-2787249-8.01.26	201-45160-42800	UTILITIES H I J K SHOP	210376	27.24
PROJ: H05-42800	SOFTBALL			UTILITIES		
		I-2787283-7.01.26	201-45160-42800	UTILITIES SOCCER FIELD	210376	99.94
PROJ: H07-42800	PEPSI COMPLEX			UTILITIES		
		I-2787285-2.01.26	201-45160-42800	UTILITIES CADWELL PARK CONCESSION	210376	12.19
PROJ: H02-42800	CADWELL STADIUM			UTILITIES		
		I-2825237-7.01.26	201-45160-42800	UTILITIES 1301 N MINNESOTA	210376	374.07
PROJ: H02-42800	CADWELL STADIUM			UTILITIES		
		I-2920373-4.01.26	201-45160-42800	UTILITIES STAD SCOREBOARD 23	210376	210.79
PROJ: H02-42800	CADWELL STADIUM			UTILITIES		
		I-4312071-6.01.26	201-45160-42800	UTILITIES 1301 N MINNESOTA PARK	210376	78.95
PROJ: H02-42800	CADWELL STADIUM			UTILITIES		
01-07141	FIRST NATIONAL BANK OMA					
		I-02062026.3877	201-45160-42700	TRAVEL, CONF BREWETT APPLICATOR LICENSE	210371	35.88
		I-02062026.3877	201-45160-42700	TRAVEL, CONF SCHLINGEN APPLICATOR LICENSE	210371	35.88
		I-02062026.3877	201-45160-42600	SUPPLIES & MA SHOCK ABSORBER,BUSHING KIT	210371	176.51
PROJ: H01-42600	SPORTS COMPLEX EQUIPMENT			SUPPLIES/MAINTENANCE		
DEPARTMENT 5160 SPORTS COMPLEXES					TOTAL:	2,337.74

PACKAGE: 07705 CREDIT CARDS 02.19.2026

VENDOR SET: 01

FUND : 201 PARK FUND

DEPARTMENT: 5210 PARKS

BANK: APBKK

BUDGET TO USE: CB-CURRENT BUDGET

VENDOR	NAME	ITEM #	G/L ACCOUNT NAME	DESCRIPTION	CHECK#	AMOUNT
01-01515	VERIZON WIRELESS					
		I-6134721459	201-45210-42800	UTILITIES ACCT #896931646-00001	210384	39.73
01-01830	NORTHWESTERN ENERGY					
		I-2573053-2.02.26	201-45210-42800	UTILITIES 421 S FOSTER ST SHOP	210376	845.77
PROJ: H51-42800		PARK SHOP		UTILITIES		
		I-2573054-0.02.26	201-45210-42800	UTILITIES 401 S FOSTER TRCT	210376	12.00
PROJ: H56-42800		HITCHCOCK PARK		UTILITIES		
		I-2573055-7.02.26	201-45210-42800	UTILITIES 1001 E BIRCH AVE SW PWSP SHLTR	210376	27.47
PROJ: H56-42800		HITCHCOCK PARK		UTILITIES		
		I-2573056-5.02.26	201-45210-42800	UTILITIES 1001 E BIRCH AVE PWSP CONC 5	210376	10.52
PROJ: H56-42800		HITCHCOCK PARK		UTILITIES		
		I-2573203-3.02.26	201-45210-42800	UTILITIES 1001 E HANSON AVE UNIT 91013	210376	26.61
PROJ: H56-42800		HITCHCOCK PARK		UTILITIES		
		I-2581644-8.02.26	201-45210-42800	UTILITIES KIWANIS WOODLOT	210376	42.11
PROJ: H71-42800		KIWANIS WOODLOT		UTILITIES		
		I-2707036-6.02.26	201-45210-42800	UTILITIES W TENNIS COURT 11	210376	12.00
PROJ: H56-42800		HITCHCOCK PARK		UTILITIES		
		I-2787841-2.02.26	201-45210-42800	UTILITIES 421 S FOSTER SHOP	210376	376.64
PROJ: H51-42800		PARK SHOP		UTILITIES		
		I-2810976-9.02.26	201-45210-42800	UTILITIES 1001 E HANSON AVE PWSP SHLTR	210376	19.46
PROJ: H56-42800		HITCHCOCK PARK		UTILITIES		
		I-2973566-9.01.26	201-45210-42800	UTILITIES 621 N MAIN ST	210376	15.54
PROJ: H62-42800		ROTARY PARK		UTILITIES		
		I-3449572-1.01.26	201-45210-42850	UTILITIES-VET 101 N MAIN ST	210376	82.73
PROJ: H63-42850		VETERANS PARK		UTILITIES/VETERANS PARK		
01-07141	FIRST NATIONAL BANK OMA					
		I-02062026.0796	201-45210-42700	TRAVEL, CONF. STEWART COMMRCL APPLCTR LICNS	210371	31.86
		I-02062026.0796	201-45210-42600	SUPPLIES & MA DOG WASTE BAGS	210371	429.34
PROJ: H56-42600		HITCHCOCK PARK		SUPPLIES/MATERIALS		
01-10154	SCHOENFELDER PORTABLES					
		I-5024	201-45210-42600	SUPPLIES & MA TOILET RENTAL	210383	145.00
PROJ: H65-42600		AMPHITHEATER		SUPPLIES/MATERIALS		
		I-5077	201-45210-42600	SUPPLIES & MA TOILET RENTAL	210383	170.00
PROJ: H65-42600		AMPHITHEATER		SUPPLIES/MATERIALS		
DEPARTMENT 5210 PARKS					TOTAL:	2,286.78

PACKET: 07705 CREDIT CARDS 02.19.2026

VENDOR SET: 01

FUND : 201 PARK FUND

DEPARTMENT: 5220 SUPERVISION

BANK: ABNF

BUDGET TO USE: CB-CURRENT BUDGET

VENDOR	NAME	ITEM #	G/L ACCOUNT NAME	DESCRIPTION	CHECK#	AMOUNT
01-01518	VERIZON WIRELESS					
		I-6134721459	201-45220-42300	UTILITIES	ACCT #986931646-00001	210324 39.73
					DEPARTMENT 5220 SUPERVISION	TOTAL: 39.73
					FUND 201 PARK FUND	TOTAL: 19,423.13

PACKET : 07710 07711 07712 07713

VENDOR SET: Mult

FUND : 201 PARK FUND

DEPARTMENT: 5110 RECREATION & AQUATICS

BANK: Multi

BUDGET TO USE: CB-CURRENT BUDGET

VENDOR	NAME	ITEM #	G/L ACCOUNT NAME	DESCRIPTION	CHECK#	AMOUNT
01-08594	MAKE IT MINE DESIGNS					
		I-46990	201-45110-42650	UNIFORMS MCCLURE LOGO FEE	210483	10.00
	PROJ: J54-ETHAN		P&A UNIFORMS	UNIFORMS-ETHAN		
DEPARTMENT 5110 RECREATION & AQUATICS					TOTAL:	10.00

PACKET : 07710 07711 07712 07713
 VENDOR SET: Mult
 FUND : 201 PARK FUND
 DEPARTMENT: 5140 RECREATION CENTER
 BUDGET TO USE: CB-CURRENT BUDGET

BANK: Multi

VENDOR	NAME	ITEM #	G/L ACCOUNT NAME	DESCRIPTION	CHECK#	AMOUNT
01-00356	QUALIFIED PRESORT SERVI	I-2279-677	201-45140-42600	SUPPLIES & MA POSTAGE 01.16-31.2026	210521	3.12
01-00752	MITCHELL PLUMBING & HEA	I-37202	201-45140-42500	REPAIR & MAIN ZURNS	210499	231.95
	PROJ: J06-RM-HVAC	REC CTR-GENERAL BLDG		REPAIR/MAINT-HVAC		
01-01324	DMG INC dba MALLOY ELEC	I-6619284	201-45140-42500	REPAIR & MAIN BALDOR MOTORS	210484	1,121.33
	PROJ: J06-RM-HVAC	REC CTR-GENERAL BLDG		REPAIR/MAINT-HVAC		
01-01410	MITCHELL SCHOOL DISTRIC	I-2583796-4.01.26	201-45140-42800	UTILITIES 1301 N KIMBALL ST-CITY SHARE	210500	1,864.53
	PROJ: J09-ELE/GAS	REC CTR UTILITIES		UTILITIES-ELECTRIC/GAS		
01-01497	GRAINGER	I-9796343730	201-45140-42600	SUPPLIES & MA SANITARY NAPKIN BAGS	210458	39.88
	PROJ: J06-SM-JANIT	REC CTR-GENERAL BLDG		SUPPLIES/MATERIAL-JANITORIAL		
01-01964	DAKOTA SUPPLY GROUP	I-S105433902.001	201-45140-42600	SUPPLIES & MA LED PACK	210438	144.06
	PROJ: J06-SM-BLDG	REC CTR-GENERAL BLDG		SUPPLIES/MATERIAL-BLDG		
01-02811	JONES SUPPLIES	I-155997	201-45140-42600	SUPPLIES & MA BATH TOWELS	210473	99.00
	PROJ: J06-SM-GENER	REC CTR-GENERAL BLDG		SUPPLIES/MATERIAL-GENERAL		
	I-156042	201-45140-42600		SUPPLIES & MA BATH TOWELS	210473	49.50
	PROJ: J06-SM-OFFIC	REC CTR-GENERAL BLDG		SUPPLIES/MATERIAL-OFFICE		
01-02880	THUNE TRUE VALUE & APPL	I-A612956	201-45140-42600	SUPPLIES & MA TILEX REMOVER	210545	7.99
	PROJ: J06-SM-JANIT	REC CTR-GENERAL BLDG		SUPPLIES/MATERIAL-JANITORIAL		
	I-B313635	201-45140-42600		SUPPLIES & MA BLACK CABLE TIES	210545	13.88
	PROJ: J06-SM-PLUMB	REC CTR-GENERAL BLDG		SUPPLIES/MATERIAL-PLUMBING		
01-03332	ASSOCIATED SUPPLY COMPA	I-A108111	201-45140-42500	REPAIR & MAIN PF VLV-MPT	210406	348.71
	PROJ: J06-RM-EQUIP	REC CTR-GENERAL BLDG		REPAIR/MAINT-EQUIPMENT		
01-09633	STAPLES	I-6055136072	201-45140-42600	SUPPLIES & MA CONSTRUCTION PAPER	210539	9.88
	PROJ: J07-SM-EQUIP	REC CTR-PRESCHOOL		SUPPLIES/MATERIAL-EQUIPMENT		
	I-6055213636	201-45140-42600		SUPPLIES & MA THERMAL ROLLS	210539	93.62
	PROJ: J06-SM-OFFIC	REC CTR-GENERAL BLDG		SUPPLIES/MATERIAL-OFFICE		
01-09703	AMAZON CAPITAL SERVICES	I-1NKH-FWGGK-LD9M	201-45140-42600	SUPPLIES & MA BACKSTROKE FLAGS	000053	49.95
	PROJ: J02-SM-EQUIP	INDOOR AQUATIC CTR		SUPPLIES/MATERIAL-EQUIPMENT		
	I-1PTR-XGTV-LMFW	201-45140-42600		SUPPLIES & MA COMPUTER DESK CHAIR	000053	99.98
	PROJ: J06-SM-OFFIC	REC CTR-GENERAL BLDG		SUPPLIES/MATERIAL-OFFICE		
DEPARTMENT 5140 RECREATION CENTER					TOTAL:	4,177.38

PACKET : 07710 07711 07712 07713
 VENDOR SET: Mult
 FUND : 201 PARK FUND
 DEPARTMENT: 5160 SPORTS COMPLEXES
 BUDGET TO USE: CB-CURRENT BUDGET

BANK: Multi

VENDOR	NAME	ITEM #	G/L ACCOUNT NAME	DESCRIPTION	CHECK#	AMOUNT
01-00008	ELFSTRAND'S ACE HARDWAR					
		I-66954	201-45160-42600	SUPPLIES & MA MISC FASTENERS	210449	16.52
	PROJ: H01-42600		SPORTS COMPLEX EQUIPMENT	SUPPLIES/MAINTENANCE		
		I-71087	201-45160-42600	SUPPLIES & MA CLEAR LINUS	210449	16.97
	PROJ: H13-42600		ARENA-SOUTH RINK	SUPPLIES-MAINTENANCE		
		I-72025	201-45160-42600	SUPPLIES & MA ACE RESTSPRAY, RAINX BLADES	210449	32.97
	PROJ: H01-42600		SPORTS COMPLEX EQUIPMENT	SUPPLIES/MAINTENANCE		
		I-72044	201-45160-42600	SUPPLIES & MA NYLON ROPE	210449	9.99
	PROJ: H01-42600		SPORTS COMPLEX EQUIPMENT	SUPPLIES/MAINTENANCE		
		I-75197	201-45160-42600	SUPPLIES & MA LOCK ENTRY	210449	34.99
	PROJ: H05-42600		SOFTBALL	SUPPLIES/MATERIALS		
01-00356	QUALIFIED PRESORT SERVI					
		I-2279-677	201-45160-42600	SUPPLIES & MA POSTAGE 01.16-31.2026	210521	0.78
01-00424	RUNNINGS SUPPLY INC					
		I-2219266	201-45160-42600	SUPPLIES & MA BULK BIN, MOUNTING TAPE	210525	30.65
	PROJ: H05-42600		SOFTBALL	SUPPLIES/MATERIALS		
01-00436	CHS INC					
		I-IA5732	201-45160-42610	GAS & FUEL LP BOTTLE FILL	210424	78.00
	PROJ: H01-42610		SPORTS COMPLEX EQUIPMENT	GAS-FUEL		
		I-IG6696	201-45160-42610	GAS & FUEL HOCKEY LP BOTTLE FILL	210424	78.00
	PROJ: H01-42610		SPORTS COMPLEX EQUIPMENT	GAS-FUEL		
		I-IG6791	201-45160-42610	GAS & FUEL HOCKEY LP BOTTLE FILL	210424	104.00
	PROJ: H01-42610		SPORTS COMPLEX EQUIPMENT	GAS-FUEL		
		I-IG6845	201-45160-42610	GAS & FUEL HOCKEY LP BOTTLE FILL	210424	52.00
	PROJ: H01-42610		SPORTS COMPLEX EQUIPMENT	GAS-FUEL		
01-00917	DAKOTA FLUID POWER INC					
		I-7432588	201-45160-42500	REPAIR & MAIN MOTOR REPAIR	210436	818.27
	PROJ: H01-42500		SPORTS COMPLEX EQUIPMENT	REPAIR/MAINTENANCE		
01-01075	JOHNSON CONTROLS BUILDI					
		I-1-137219107134	201-45160-42500	REPAIR & MAIN S RINK CONDENSER FAN REPLACED	000051	2,377.62
	PROJ: H13-42500		ARENA-SOUTH RINK	REPAIR-MAINTENANCE		
		I-1-137244360266	201-45160-42500	REPAIR & MAIN CARBON MONOXIDE SENSOR	000051	1,315.80
	PROJ: H13-42500		ARENA-SOUTH RINK	REPAIR-MAINTENANCE		
01-01202	TK ELECTRIC					
		I-21941	201-45160-43300	CAPITAL IMPRO NEW LED HIGHBAY LIGHT IN RINK	210547	9,500.00
	PROJ: H06-43300		ARENA-NORTH RINK	CAPITAL IMPROVEMENTS		
01-01355	MIDWEST TURF & IRRIGATI					
		I-3959889-00	201-45160-42600	SUPPLIES & MA CARRIER BUSHING, SPACER	210493	31.60
	PROJ: H01-42600		SPORTS COMPLEX EQUIPMENT	SUPPLIES/MAINTENANCE		
		I-3959889-01	201-45160-42600	SUPPLIES & MA CARRIER BUSHING	210493	76.33
	PROJ: H01-42600		SPORTS COMPLEX EQUIPMENT	SUPPLIES/MAINTENANCE		

PACKET : 07710 07711 07712 07713
 VENDOR SET: Mult
 FUND : 201 PARK FUND
 DEPARTMENT: 5160 SPORTS COMPLEXES
 BUDGET TO USE: CB-CURRENT BUDGET

BANK: Multi

VENDOR	NAME	ITEM #	G/L ACCOUNT NAME	DESCRIPTION	CHECK#	AMOUNT
01-01404	MITCHELL IRON & SUPPLY					
		I-15753	201-45160-42500	REPAIR & MAIN ANGLE IRON, FLAT IRON, CUTTING	210498	89.76
	PROJ: H05-42500		SOFTBALL	REPAIR/MAINTENANCE		
		I-87783	201-45160-42500	REPAIR & MAIN BALL BEARING	210498	17.86
	PROJ: H01-42500		SPORTS COMPLEX EQUIPMENT	REPAIR/MAINTENANCE		
		I-87791	201-45160-42500	REPAIR & MAIN ORINGS, WASHER, WIPER	210498	38.78
	PROJ: H01-42500		SPORTS COMPLEX EQUIPMENT	REPAIR/MAINTENANCE		
01-01830	NORTEWESTERN ENERGY					
		I-2579141-9.02.26	201-45160-42800	UTILITIES 1001 N MINNESOTA EMTR	210508	12,960.08
	PROJ: H06-42800		ARENA-NORTH RINK	UTILITIES		
01-01944	PFEIFER IMPLEMENT CO IN					
		I-01-206708	201-45160-42500	REPAIR & MAIN NUTS, BOLTS, PIN BOOM, FITTINGS	210516	3,808.91
	PROJ: H01-42500		SPORTS COMPLEX EQUIPMENT	REPAIR/MAINTENANCE		
		I-01-207184	201-45160-42500	REPAIR & MAIN ANGLE BROOM, PIN, LINK, WHEEL	210516	497.99
	PROJ: H01-42500		SPORTS COMPLEX EQUIPMENT	REPAIR/MAINTENANCE		
01-02679	MENARD'S INC					
		I-116	201-45160-42600	SUPPLIES & MA WOOD HANDLE	210487	6.99
	PROJ: H13-42600		ARENA-SOUTH RINK	SUPPLIES-MAINTENANCE		
		I-673	201-45160-42600	SUPPLIES & MA USED RAILROAD TIES	210487	20.99
	PROJ: H05-42600		SOFTBALL	SUPPLIES/MATERIALS		
01-02790	SUN GOLD SPORTS LLC					
		I-37288	201-45160-42650	UNIFORMS STAFF LOGOD SHIRTS	210543	408.00
01-02811	JONES SUPPLIES					
		I-155921	201-45160-42600	SUPPLIES & MA ROLL TOWELS, GLASS CLEANER, TOWE	210473	334.31
	PROJ: H13-42600		ARENA-SOUTH RINK	SUPPLIES-MAINTENANCE		
		I-156083	201-45160-42600	SUPPLIES & MA BLACK LINERS	210473	119.61
	PROJ: H06-42600		ARENA-NORTH RINK	SUPPLIES-MATERIALS		
01-03490	VAN WALL EQUIPMENT INC					
		I-6800109	201-45160-42600	SUPPLIES & MA WASHER, FREIGHT	210552	28.23
	PROJ: H01-42600		SPORTS COMPLEX EQUIPMENT	SUPPLIES/MAINTENANCE		
		I-6802233	201-45160-42600	SUPPLIES & MA SEAL KITS, FREIGHT	210552	596.42
	PROJ: H01-42600		SPORTS COMPLEX EQUIPMENT	SUPPLIES/MAINTENANCE		
		I-6806182	201-45160-42600	SUPPLIES & MA BLADES, FREIGHT	210552	295.35
	PROJ: H01-42600		SPORTS COMPLEX EQUIPMENT	SUPPLIES/MAINTENANCE		
01-06324	CUSTOM PLUS COLLISION C					
		I-14892	201-45160-42500	REPAIR & MAIN WINDSHIELD REPLACED	210433	357.00
	PROJ: H01-42500		SPORTS COMPLEX EQUIPMENT	REPAIR/MAINTENANCE		
01-06698	BEACON ATHLETICS LLC					
		I-0627905-IN	201-45160-42600	SUPPLIES & MA FENCE TOPPERS	210409	2,059.94
	PROJ: H05-42600		SOFTBALL	SUPPLIES/MATERIALS		

PACKET : 07710 07711 07712 07713
 VENDOR SET: Mult
 FUND : 201 PARK FUND
 DEPARTMENT: 5160 SPORTS COMPLEXES
 BUDGET TO USE: CB-CURRENT BUDGET

BANK: Multi

VENDOR	NAME	ITEM #	G/L ACCOUNT NAME	DESCRIPTION	CHECK#	AMOUNT
01-06960	HENKE TRACTOR REPAIR LL					
		I-4829	201-45160-42500	REPAIR & MAIN STARTER MOTOR	210462	160.00
	PROJ: H01-42500		SPORTS COMPLEX EQUIPMENT	REPAIR/MAINTENANCE		
01-07717	VERN EIDE FORD					
		I-25053432	201-45160-42600	SUPPLIES & MA LATCH	210553	143.50
	PROJ: H01-42600		SPORTS COMPLEX EQUIPMENT	SUPPLIES/MAINTENANCE		
01-08130	C & B OPERATIONS LLC					
		I-13573306	201-45160-42600	SUPPLIES & MA SPRING PIN	210415	3.81
	PROJ: H01-42600		SPORTS COMPLEX EQUIPMENT	SUPPLIES/MAINTENANCE		
		I-13577543	201-45160-42600	SUPPLIES & MA IDLER,BELT	210415	272.63
	PROJ: H01-42600		SPORTS COMPLEX EQUIPMENT	SUPPLIES/MAINTENANCE		
01-08594	MAKE IT MINE DESIGNS					
		I-47261	201-45160-42500	REPAIR & MAIN VINYL LETTER SIGNS	210483	215.00
	PROJ: H05-42500		SOFTBALL	REPAIR/MAINTENANCE		
01-09349	HOWES OIL CO					
		I-374058	201-45160-42610	GAS & FUEL DIESEL	210465	8.90
		I-374058	201-45160-42610	GAS & FUEL DIESEL	210465	7.69
		I-375046	201-45160-42610	GAS & FUEL UNLEADED GAS	210465	307.64
01-09633	STAPLES					
		I-6055213631	201-45160-42600	SUPPLIES & MA TOWELS	210539	123.88
	PROJ: H13-42600		ARENA-SOUTH RINK	SUPPLIES-MAINTENANCE		
		I-6055414363	201-45160-42600	SUPPLIES & MA HANGERS	210539	19.31
	PROJ: H13-42600		ARENA-SOUTH RINK	SUPPLIES-MAINTENANCE		
		I-6055414364	201-45160-42600	SUPPLIES & MA HANGERS	210539	26.18
	PROJ: H13-42600		ARENA-SOUTH RINK	SUPPLIES-MAINTENANCE		
01-09703	AMAZON CAPITAL SERVICES					
		I-1L99-39JJ-WXGQ	201-45160-42600	SUPPLIES & MA COTTER PIN,DESK ORGANIZER,FILE 000053		329.72
	PROJ: H13-42600		ARENA-SOUTH RINK	SUPPLIES-MAINTENANCE		
DEPARTMENT 5160 SPORTS COMPLEXES					TOTAL:	37,832.97

PACKET : 07710 07711 07712 07713

VENDOR SET: Mult

FUND : 201 PARK FUND

DEPARTMENT: 5210 PARKS

BANK: Multi

BUDGET TO USE: CB-CURRENT BUDGET

VENDOR	NAME	ITEM #	G/L ACCOUNT NAME	DESCRIPTION	CHECK#	AMOUNT
01-00177	RON'S SAW SALES					
		I-234260	201-45210-42600	SUPPLIES & MA BAR, SPROCKET WASHER, CLIPS	210523	140.96
	PROJ: H51-42600		PARK SHOP	SUPPLIES/MATERIALS		
01-00210	BAILEY METAL FABRICATOR					
		I-66171	201-45210-42500	REPAIR & MAIN PLASMA DUMPSTER REPAIRS	210408	569.62
	PROJ: H51-42500		PARK SHOP	REPAIR/MAINTENANCE		
		I-66194	201-45210-42500	REPAIR & MAIN REPAIR RAMP PINS, BRACKETS	210408	134.81
	PROJ: H50-42500		PARKS EQUIPMENT	REPAIR/MAINTENANCE		
01-00356	QUALIFIED PRESORT SERVI					
		I-2279-677	201-45210-42300	PUBLISHING POSTAGE 01.16-31.2026	210521	1.56
01-00424	RUNNINGS SUPPLY INC					
		I-2218419	201-45210-42600	SUPPLIES & MA WRECKING BAR, WONDER BAR, PAIL	210525	40.38
	PROJ: H51-42600		PARK SHOP	SUPPLIES/MATERIALS		
		I-2222186	201-45210-42600	SUPPLIES & MA SHIELD WINDOW, FACESHIELD GREEN	210525	29.48
	PROJ: H51-42600		PARK SHOP	SUPPLIES/MATERIALS		
01-00436	CBS INC					
		I-IG4667	201-45210-42610	GAS & FUEL P&R RUBY FIELDMASTER	210424	1,351.57
	PROJ: H50-42610		PARKS EQUIPMENT	GAS/FUEL		
		I-IG4668	201-45210-42610	GAS & FUEL P&R RUBY FIELDMASTER	210424	1,383.49
	PROJ: H50-42610		PARKS EQUIPMENT	GAS/FUEL		
		I-IG4669	201-45210-42610	GAS & FUEL P&R UNLEADED GAS	210424	619.07
	PROJ: H50-42610		PARKS EQUIPMENT	GAS/FUEL		
01-01199	STURDEVANTS AUTO VALUE					
		I-815070144	201-45210-42500	REPAIR & MAIN BATTERY, OIL FILTER	210541	82.98
	PROJ: H50-42500		PARKS EQUIPMENT	REPAIR/MAINTENANCE		
		I-815070568	201-45210-42500	REPAIR & MAIN HYDRAULIC, FUEL, OIL FLEET, FILTE	210541	458.09
	PROJ: H50-42500		PARKS EQUIPMENT	REPAIR/MAINTENANCE		
01-01830	NORTHWESTERN ENERGY					
		I-2698971-5.02.26	201-45210-42800	UTILITIES CHRISTMAS LIGHTS	210508	1,648.59
	PROJ: H82-42800		DOWNTOWN BEAUTIFCATION	UTILITIES		
		I-2997129-8.02.26	201-45210-42800	UTILITIES 800 E 11TH AVE	210508	12.38
	PROJ: H60-42800		NORTHRIDGE PARK	UTILITIES		
		I-3975323-1.02.26	201-45210-42800	UTILITIES 502 S LAWLER ST	210508	81.86
	PROJ: H55-42800		DRY RUN CREEK PARK	UTILITIES		
01-02480	SPN & ASSOCIATES					
		I-2025-34 P.E. #6	201-45210-42200	PROFESSIONAL 2025-34 P.E. #6	210538	1,913.75
01-02679	MENARD'S INC					
		I-99843	201-45210-42600	SUPPLIES & MA RADIUS BOARD, GREEN TREATED WOO	210487	143.07
	PROJ: H87-42600		PATTON YOUNG	SUPPLIES-MAINTENANCE		
01-02804	TMA STORES					

PACKET : 07710 07711 07712 07713

VENDOR SET: Mult

FUND : 201 PARK FUND

DEPARTMENT: 5210 PARKS

BANK: Multi

BUDGET TO USE: CB-CURRENT BUDGET

VENDOR	NAME	ITEM #	G/L ACCOUNT NAME	DESCRIPTION	CHECK#	AMOUNT
01-02804	TMA STORES		continued			
		I-113579	201-45210-42500	REPAIR & MAIN LOOSE FLAT REPAIR	210548	28.17
	PROJ: H50-42500		PARKS EQUIPMENT	REPAIR/MAINTENANCE		
01-02811	JONES SUPPLIES					
		I-156030	201-45210-42600	SUPPLIES & MA BLACK LINERS	210473	134.70
	PROJ: H87-42600		PATTON YOUNG	SUPPLIES-MAINTENANCE		
01-08216	ALTEC INDUSTRIES INC					
		I-51963576	201-45210-42500	REPAIR & MAIN BOOM STOW CRADLE	210402	289.60
	PROJ: H50-42500		PARKS EQUIPMENT	REPAIR/MAINTENANCE		
01-09349	HOWES OIL CO					
		I-375046	201-45210-42610	GAS & FUEL UNLEADED GAS	210465	79.46
DEPARTMENT 5210 PARKS					TOTAL:	9,143.59

PACKET : 07710 07711 07712 07713

VENDOR SET: Mult

FUND : 201 PARK FUND

DEPARTMENT: 5220 SUPERVISION

BANK: Multi

BUDGET TO USE: CB-CURRENT BUDGET

VENDOR	NAME	ITEM #	G/L ACCOUNT NAME	DESCRIPTION	CHECK#	AMOUNT
01-01590	MCLEOD'S PRINTING					
		I-90836	201-45220-42300	PUBLISHING BIKE TRAIL BROCHURES	210486	800.00
01-02624	SD PUBLIC ASSURANCE ALL					
		I-32065-4221	201-45220-42100	INSURANCE 2026 INSURANCE COVERAGE	210532	10,202.04
		I-32065-4221	201-45220-42100	INSURANCE 2026 INSURANCE COVERAGE	210532	7,178.54
		I-32065-4221	201-45220-42100	INSURANCE 2026 INSURANCE COVERAGE	210532	2,744.50
		I-32065-4221	201-45220-42100	INSURANCE 2026 INSURANCE COVERAGE	210532	124,716.99
DEPARTMENT 5220 SUPERVISION					TOTAL:	145,642.07
FUND 201 PARK FUND					TOTAL:	196,806.01

CITY OF MITCHELL
REVENUE & EXPENSE REPORT (UNAUDITED)
AS OF: FEBRUARY 28TH, 2026

619-CAMPGROUND
FINANCIAL SUMMARY

	CURRENT BUDGET	CURRENT PERIOD	PRIOR YEAR YTD ACTUAL	CURRENT YTD ACTUAL	BUDGET BALANCE	% YTD BUDGET
<u>REVENUE SUMMARY</u>						
INTERGOVERNMENTAL REV	0	0.00	0.00	0.00	0.00	0.00
MISCELLANEOUS REVENUE	0	0.00	(171.57)	0.00	0.00	0.00
CHARGES-GOODS & SERVICES	<u>118,600</u>	<u>2,996.20</u>	<u>8,588.58</u>	<u>8,293.82</u>	<u>110,306.18</u>	<u>6.99</u>
TOTAL REVENUES	118,600	2,996.20	8,417.01	8,293.82	110,306.18	93.01
<u>EXPENDITURE SUMMARY</u>						
<u>CAMPGROUND</u>						
OTHER	0	0.00	0.00	0.00	0.00	0.00
SALARIES	33,483	0.00	0.00	0.00	33,483.00	0.00
CURRENT EXPENSES	57,444	2,589.13	2,479.61	2,679.96	54,764.04	4.67
CAPITAL OUTLAY	<u>0</u>	<u>326.00</u>	<u>0.00</u>	<u>326.00</u>	<u>(326.00)</u>	<u>0.00</u>
TOTAL CAMPGROUND	<u>90,927</u>	<u>2,915.13</u>	<u>2,479.61</u>	<u>3,005.96</u>	<u>87,921.04</u>	<u>96.69</u>
TOTAL EXPENDITURES	90,927	2,915.13	2,479.61	3,005.96	87,921.04	96.69
REVENUE OVER/ (UNDER) EXPENDITURES	27,673	81.07	5,937.40	5,287.86	22,385.14	80.89
OTHER SOURCES	0	0.00	0.00	0.00	0.00	0.00
REVENUES & OTHER SOURCES OVER (UNDER) EXPENDITURES & OTHER (USES)	27,673	81.07	5,937.40	5,287.86	22,385.14	0.00

CITY OF MITCHELL
 REVENUE & EXPENSE REPORT (UNAUDITED)
 AS OF: FEBRUARY 28TH, 2026

619-CAMPGROUND

REVENUES	CURRENT BUDGET	CURRENT PERIOD	PRIOR YEAR YDT ACTUAL	CURRENT YTD ACTUAL	BUDGET BALANCE	% YTD BUDGET
<u>INTERGOVERNMENTAL REV</u>						
619-3310 FEMA GRANT-EMERGENCY SHELTER	0	0.00	0.00	0.00	0.00	0.00
TOTAL INTERGOVERNMENTAL REV	0	0.00	0.00	0.00	0.00	0.00
<u>MISCELLANEOUS REVENUE</u>						
619-369 REFUNDS & REIMBURSEMENTS	0	0.00	0.00	0.00	0.00	0.00
619-3692 CREDIT CARD FEES	0	0.00	(171.57)	0.00	0.00	0.00
TOTAL MISCELLANEOUS REVENUE	0	0.00	(171.57)	0.00	0.00	0.00
<u>CHARGES-GOODS & SERVICES</u>						
619-3771 FEES	115,000	2,812.00	8,071.46	7,710.09	107,289.91	6.70
619-3773 CONCESSIONS	1,100	0.00	0.00	0.00	1,100.00	0.00
619-3774 LAUNDRY/CLEANING/DAMAGES	600	0.00	0.00	0.00	600.00	0.00
619-3775 RENTALS	300	0.00	0.00	0.00	300.00	0.00
619-37790 SALES TAX-TOURISM	1,600	42.20	117.20	117.73	1,482.27	7.36
619-37795 BID #4 TAX	0	142.00	399.92	466.00	(466.00)	0.00
TOTAL CHARGES-GOODS & SERVICES	118,600	2,996.20	8,588.58	8,293.82	110,306.18	93.01
TOTAL REVENUE	118,600	2,996.20	8,417.01	8,293.82	110,306.18	93.01

CITY OF MITCHELL
REVENUE & EXPENSE REPORT (UNAUDITED)
AS OF: FEBRUARY 28TH, 2026

619-CAMPGROUND
CAMPGROUND

DEPARTMENTAL EXPENDITURES	CURRENT BUDGET	CURRENT PERIOD	PRIOR YEAR YDT ACTUAL	CURRENT YTD ACTUAL	BUDGET BALANCE	% YTD BUDGET
<u>OTHER</u>						
619-45220-21670 DEPRECIATION EXPENSE	0	0.00	0.00	0.00	0.00	0.00
TOTAL OTHER	0	0.00	0.00	0.00	0.00	0.00
<u>SALARIES</u>						
619-45220-41100 SALARIES	0	0.00	0.00	0.00	0.00	0.00
619-45220-41120 PART TIME	31,104	0.00	0.00	0.00	31,104.00	0.00
619-45220-41200 SOCIAL SECURITY/MEDICARE	2,379	0.00	0.00	0.00	2,379.00	0.00
619-45220-41300 RETIREMENT	0	0.00	0.00	0.00	0.00	0.00
619-45220-41500 GROUP INSURANCE	0	0.00	0.00	0.00	0.00	0.00
TOTAL SALARIES	33,483	0.00	0.00	0.00	33,483.00	100.00
<u>CURRENT EXPENSES</u>						
619-45220-42100 INSURANCE	0	0.00	0.00	0.00	0.00	0.00
619-45220-42200 PROFESSIONAL SERVICES	4,000	0.00	0.00	0.00	4,000.00	0.00
619-45220-42300 ADVERTISING/PROMOTION	1,300	0.00	0.00	0.00	1,300.00	0.00
619-45220-42500 REPAIR & MAINTENANCE	8,000	0.00	0.00	0.00	8,000.00	0.00
619-45220-42600 SUPPLIES	7,500	0.00	30.00	0.00	7,500.00	0.00
619-45220-42610 COST OF GOODS SOLD	0	0.00	0.00	0.00	0.00	0.00
619-45220-42620 COMPUTER SOFTWARE	4,344	1,537.66	1,594.37	1,537.66	2,806.34	35.40
619-45220-42650 MINOR EQUIPMENT	0	0.00	0.00	0.00	0.00	0.00
619-45220-42800 UTILITIES	23,000	685.22	761.02	763.17	22,236.83	3.32
619-45220-42931 TOURISM TAX-1.5%	1,800	75.42	94.22	88.30	1,711.70	4.91
619-45220-42935 BID TAX	5,000	0.00	0.00	0.00	5,000.00	0.00
619-45220-42950 CREDIT CARD FEES	2,500	290.83	0.00	290.83	2,209.17	11.63
TOTAL CURRENT EXPENSES	57,444	2,589.13	2,479.61	2,679.96	54,764.04	95.33
<u>CAPITAL OUTLAY</u>						
619-45220-43200 BUILDINGS	0	326.00	0.00	326.00 (326.00)	0.00
619-45220-43400 EQUIPMENT	0	0.00	0.00	0.00	0.00	0.00
TOTAL CAPITAL OUTLAY	0	326.00	0.00	326.00 (326.00)	0.00
TOTAL CAMPGROUND	90,927	2,915.13	2,479.61	3,005.96	87,921.04	96.69
=====						
TOTAL EXPENDITURES	90,927	2,915.13	2,479.61	3,005.96	87,921.04	96.69
=====						
REVENUE OVER/(UNDER) EXPENDITURES	27,673	81.07	5,937.40	5,287.86	22,385.14	80.89

CITY OF MITCHELL
 REVENUE & EXPENSE REPORT (UNAUDITED)
 AS OF: FEBRUARY 28TH, 2026

619-CAMPGROUND
 CAMPGROUND

DEPARTMENTAL EXPENDITURES	CURRENT BUDGET	CURRENT PERIOD	PRIOR YEAR YTD ACTUAL	CURRENT YTD ACTUAL	BUDGET BALANCE	% YTD BUDGET
<u>OTHER FINANCING SOURCES</u>						
619-3900 FROM GENERAL FUND	0	0.00	0.00	0.00	0.00	0.00
619-39104 DAMAGE/LOSS REIMB-CAP ASSETS	<u>0</u>	<u>0.00</u>	<u>0.00</u>	<u>0.00</u>	<u>0.00</u>	<u>0.00</u>
TOTAL OTHER FINANCING SOURCES	0	0.00	0.00	0.00	0.00	0.00
<hr/>						
REVENUES & OTHER SOURCES OVER (UNDER) EXPENDITURES & OTHER (USES)	27,673	81.07	5,937.40	5,287.86	22,385.14	80.89

CITY OF MITCHELL
REVENUE & EXPENSE REPORT (UNAUDITED)
AS OF: FEBRUARY 28TH, 2026

201-PARK FUND
FINANCIAL SUMMARY

	CURRENT BUDGET	CURRENT PERIOD	PRIOR YEAR YTD ACTUAL	CURRENT YTD ACTUAL	BUDGET BALANCE	% YTD BUDGET
<u>REVENUE SUMMARY</u>						
INTERGOVERNMENTAL REV	499,813	0.00	3,616.37	0.00	499,813.00	0.00
CHARGES-GOODS & SERVICES	1,174,750	62,252.27	148,170.02	136,915.85	1,037,834.15	11.65
MISCELLANEOUS REVENUE	<u>23,732</u>	<u>0.00</u>	<u>(1,422.95)</u>	<u>0.00</u>	<u>23,732.00</u>	<u>0.00</u>
TOTAL REVENUES	1,698,295	62,252.27	150,363.44	136,915.85	1,561,379.15	91.94
<u>EXPENDITURE SUMMARY</u>						
<u>RECREATION & AQUATICS</u>						
SALARIES	435,017	20,796.32	38,821.84	41,585.99	393,431.01	9.56
CURRENT EXPENSES	231,021	2,192.06	7,987.86	9,592.76	221,428.24	4.15
CAPITAL OUTLAY	<u>47,000</u>	<u>0.00</u>	<u>0.00</u>	<u>0.00</u>	<u>47,000.00</u>	<u>0.00</u>
TOTAL RECREATION & AQUATICS	713,038	22,988.38	46,809.70	51,178.75	661,859.25	92.82
<u>RECREATION CENTER</u>						
SALARIES	678,427	55,484.27	117,547.30	105,825.12	572,601.88	15.60
CURRENT EXPENSES	352,171	32,033.97	39,399.17	36,242.16	315,928.84	10.29
CAPITAL OUTLAY	<u>131,000</u>	<u>11,730.57</u>	<u>20,143.20</u>	<u>11,730.57</u>	<u>119,269.43</u>	<u>8.95</u>
TOTAL RECREATION CENTER	1,161,598	99,248.81	177,089.67	153,797.85	1,007,800.15	86.76
<u>SPORTS COMPLEXES</u>						
SALARIES	553,253	35,678.87	61,171.18	72,433.29	480,819.71	13.09
CURRENT EXPENSES	319,370	21,472.06	23,240.88	22,828.24	296,541.76	7.15
CAPITAL OUTLAY	<u>1,420,500</u>	<u>20,520.00</u>	<u>0.00</u>	<u>20,520.00</u>	<u>1,399,980.00</u>	<u>1.44</u>
TOTAL SPORTS COMPLEXES	2,293,123	77,670.93	84,412.06	115,781.53	2,177,341.47	94.95
<u>CADWELL CONCESSIONS</u>						
SALARIES	15,364	0.00	0.00	0.00	15,364.00	0.00
CURRENT EXPENSES	22,500	0.00	0.00	0.00	22,500.00	0.00
CAPITAL OUTLAY	<u>0</u>	<u>0.00</u>	<u>0.00</u>	<u>0.00</u>	<u>0.00</u>	<u>0.00</u>
TOTAL CADWELL CONCESSIONS	37,864	0.00	0.00	0.00	37,864.00	100.00
<u>PARKS</u>						
SALARIES	737,955	46,081.71	84,031.75	91,700.52	646,254.48	12.43
CURRENT EXPENSES	336,700	17,524.49	8,956.30	17,979.41	318,720.59	5.34
CAPITAL OUTLAY	<u>847,313</u>	<u>0.00</u>	<u>4,978.75</u>	<u>0.00</u>	<u>847,313.00</u>	<u>0.00</u>
TOTAL PARKS	1,921,968	63,606.20	97,966.80	109,679.93	1,812,288.07	94.29

CITY OF MITCHELL
 REVENUE & EXPENSE REPORT (UNAUDITED)
 AS OF: FEBRUARY 28TH, 2026

201-PARK FUND
 FINANCIAL SUMMARY

	CURRENT BUDGET	CURRENT PERIOD	PRIOR YEAR YDT ACTUAL	CURRENT YTD ACTUAL	BUDGET BALANCE	% YTD BUDGET
<u>SUPERVISION</u>						
SALARIES	169,550	12,262.09	25,385.62	24,506.66	145,043.34	14.45
CURRENT EXPENSES	145,285	23,431.73	19,285.56	23,431.88	121,853.12	16.13
CAPITAL OUTLAY	<u>0</u>	<u>0.00</u>	<u>0.00</u>	<u>0.00</u>	<u>0.00</u>	<u>0.00</u>
TOTAL SUPERVISION	<u>314,835</u>	<u>35,693.82</u>	<u>44,671.18</u>	<u>47,938.54</u>	<u>266,896.46</u>	<u>84.77</u>
TOTAL EXPENDITURES	6,442,426	299,208.14	450,949.41	478,376.60	5,964,049.40	92.57
REVENUE OVER/ (UNDER) EXPENDITURES	(4,744,131)	(236,955.87)	(300,585.97)	(341,460.75)	(4,402,670.25)	92.80
OTHER SOURCES	4,744,131	0.00	0.00	0.00	4,744,131.00	0.00
OTHER USES	0	0.00	0.00	0.00	0.00	0.00
REVENUES & OTHER SOURCES OVER (UNDER) EXPENDITURES & OTHER (USES)	0	(236,955.87)	(300,585.97)	(341,460.75)	341,460.75	0.00

CITY OF MITCHELL
REVENUE & EXPENSE REPORT (UNAUDITED)
AS OF: FEBRUARY 28TH, 2026

201-PARK FUND

REVENUES	CURRENT BUDGET	CURRENT PERIOD	PRIOR YEAR YTD ACTUAL	CURRENT YTD ACTUAL	BUDGET BALANCE	% YTD BUDGET
<u>INTERGOVERNMENTAL REV</u>						
201-33105 FEMA CFDA #97.036	0	0.00	179.84	0.00	0.00	0.00
201-33110 UCF IRA TREE CFDA #10.727	0	0.00	0.00	0.00	0.00	0.00
201-33115 HOMELAND SECURITY-CFDA #97.067	0	0.00	0.00	0.00	0.00	0.00
201-33120 LWCF GRANT	467,313	0.00	0.00	0.00	467,313.00	0.00
201-33410 STATE OF SD-DOH (PREV&HEALTH)	32,500	0.00	3,436.53	0.00	32,500.00	0.00
201-33931 STATE OF SD-DISASTER ASSIST	0	0.00	0.00	0.00	0.00	0.00
201-33932 STATE OF SD-DOH (WEST NILE)	<u>0</u>	<u>0.00</u>	<u>0.00</u>	<u>0.00</u>	<u>0.00</u>	<u>0.00</u>
TOTAL INTERGOVERNMENTAL REV	499,813	0.00	3,616.37	0.00	499,813.00	100.00
<u>CHARGES-GOODS & SERVICES</u>						
201-34602 SWIMMING POOL	115,000	210.84	389.03	455.73	114,544.27	0.40
201-34603 RECREATION CENTER	665,400	49,234.54	126,199.83	116,052.22	549,347.78	17.44
201-34604 SWIM POOL-OTHER SALES	27,000	0.00	0.00	0.00	27,000.00	0.00
201-34605 REC CENTER-POOL	35,000	6,122.71	7,945.47	6,122.71	28,877.29	17.49
201-3462 CAPITAL IMPROV FEE-CADWELL	9,550	0.00	0.00	0.00	9,550.00	0.00
201-34621 CAPITAL IMPROV FEE-PARKS	0	0.00	0.00	0.00	0.00	0.00
201-34622 MISC NON~TAXABLE FUNDS	0	0.00	0.00	0.00	0.00	0.00
201-3463 PLAYGROUNDS & ATHLETICS	46,000	941.61	0.00	1,051.61	44,948.39	2.29
201-34631 ADVERTISING REVENUE	0	0.00	0.00	0.00	0.00	0.00
201-346369REFUNDS AND REIMBURSEMENTS	5,000	4.71	61.00	4.71	4,995.29	0.09
201-3464 PARKS AND BOULEVARDS	39,000	3,116.00	5,245.32	4,866.00	34,134.00	12.48
201-3467 CADWELL SPORTS COMPLEX	54,800	0.00	841.03	0.00	54,800.00	0.00
201-3468 CADWELL CONCESSIONS	48,000	76.74	288.11	137.00	47,863.00	0.29
201-34690 ICE ARENA	<u>130,000</u>	<u>2,545.12</u>	<u>7,200.23</u>	<u>8,225.87</u>	<u>121,774.13</u>	<u>6.33</u>
TOTAL CHARGES-GOODS & SERVICES	1,174,750	62,252.27	148,170.02	136,915.85	1,037,834.15	88.35
<u>MISCELLANEOUS REVENUE</u>						
201-3622 RENTALS	0	0.00	0.00	0.00	0.00	0.00
201-367 P&A-CONTRIB FR/PRIVATE SOURCE	0	0.00	0.00	0.00	0.00	0.00
201-3671 PARK-CONTRIB FR/PRIVATE SOURCE	0	0.00	0.00	0.00	0.00	0.00
201-3672 REC-CONTRIB FROM PRIVATE SOURC	0	0.00	0.00	0.00	0.00	0.00
201-3673 CONT FR/PRIV SOURCE-UN WAY	3,000	0.00	0.00	0.00	3,000.00	0.00
201-3674 CONTR PRIV SRC-SANFORD	10,000	0.00	0.00	0.00	10,000.00	0.00
201-3675 CONTR PRIV SRC-CADWELL	0	0.00	0.00	0.00	0.00	0.00
201-3676 CITY CONTRIBUTION	9,000	0.00	0.00	0.00	9,000.00	0.00
201-3692 CREDIT CARD FEES	0	0.00	(1,422.95)	0.00	0.00	0.00
201-3698 HAYLAND LEASE	<u>1,732</u>	<u>0.00</u>	<u>0.00</u>	<u>0.00</u>	<u>1,732.00</u>	<u>0.00</u>
TOTAL MISCELLANEOUS REVENUE	23,732	0.00	(1,422.95)	0.00	23,732.00	100.00
TOTAL REVENUE	1,698,295	62,252.27	150,363.44	136,915.85	1,561,379.15	91.94

CITY OF MITCHELL
REVENUE & EXPENSE REPORT (UNAUDITED)
AS OF: FEBRUARY 28TH, 2026

201-PARK FUND
RECREATION & AQUATICS

DEPARTMENTAL EXPENDITURES	CURRENT BUDGET	CURRENT PERIOD	PRIOR YEAR YTD ACTUAL	CURRENT YTD ACTUAL	BUDGET BALANCE	% YTD BUDGET
<u>SALARIES</u>						
201-45110-41100 SALARIES	170,912	12,891.08	27,004.61	25,782.16	145,129.84	15.09
201-45110-41110 OVERTIME	1,000	0.00	0.00	0.00	1,000.00	0.00
201-45110-41120 PART TIME-REC	120,613	786.50	616.81	1,566.83	119,046.17	1.30
201-45110-41125 PART TIME-AQUATICS	40,745	0.00	0.00	0.00	40,745.00	0.00
201-45110-41200 SOCIAL SECURITY/MEDICARE	25,801	946.30	1,986.18	1,892.12	23,908.88	7.33
201-45110-41300 RETIREMENT	10,375	773.46	1,620.28	1,546.92	8,828.08	14.91
201-45110-41500 GROUP INSURANCE	65,571	5,398.98	7,593.96	10,797.96	54,773.04	16.47
201-45110-41700 COMPENSATED ABSENCES	<u>0</u>	<u>0.00</u>	<u>0.00</u>	<u>0.00</u>	<u>0.00</u>	<u>0.00</u>
TOTAL SALARIES	435,017	20,796.32	38,821.84	41,585.99	393,431.01	90.44
<u>CURRENT EXPENSES</u>						
201-45110-42200 PROFESSIONAL FEES & SERV	1,850	670.00	520.00	670.00	1,180.00	36.22
201-45110-42250 PROGRAMMING SERVICES	16,000	0.00	0.00	0.00	16,000.00	0.00
201-45110-42300 PUBLISHING	4,000	0.00	0.00	0.00	4,000.00	0.00
201-45110-42350 PUBLISHING-AQUATICS	500	0.00	0.00	0.00	500.00	0.00
201-45110-42500 REPAIR & MAINTENANCE	0	0.00	0.00	0.00	0.00	0.00
201-45110-42550 REPAIR & MAINT-AQUATICS	6,000	136.68	0.00	136.68	5,863.32	2.28
201-45110-42600 SUPPLIES & MATERIALS	10,000	183.98	171.88	183.98	9,816.02	1.84
201-45110-42601 CONCESSION SUPPLIES	25,000	0.00	0.00	0.00	25,000.00	0.00
201-45110-42602 POOL CHEMICALS	46,000	0.00	0.00	0.00	46,000.00	0.00
201-45110-42605 SUPPLIES & MAT-AQUATICS	7,750	0.00	0.00	0.00	7,750.00	0.00
201-45110-42610 GAS & FUEL	0	0.00	0.00	0.00	0.00	0.00
201-45110-42650 UNIFORMS	500	0.00	0.00	0.00	500.00	0.00
201-45110-42693 COMPUTER SOFTWARE	3,700	0.00	3,646.52	3,700.00	0.00	100.00
201-45110-42695 COMP SOFTWARE-AQUATICS	3,700	0.00	3,646.52	3,700.00	0.00	100.00
201-45110-42700 TRAVEL, CONF. & DUES	0	0.00	0.00	0.00	0.00	0.00
201-45110-42750 TRAVEL, CONF, DUES-AQUAT	500	0.00	0.00	0.00	500.00	0.00
201-45110-42800 UTILITIES	600	0.93	2.94	1.63	598.37	0.27
201-45110-42850 UTILITIES-AQUATICS	92,000	178.94	0.00	178.94	91,821.06	0.19
201-45110-42950 CREDIT CARD FEES	12,421	1,021.53	0.00	1,021.53	11,399.47	8.22
201-45110-42999 REFUND OF FEES	<u>500</u>	<u>0.00</u>	<u>0.00</u>	<u>0.00</u>	<u>500.00</u>	<u>0.00</u>
TOTAL CURRENT EXPENSES	231,021	2,192.06	7,987.86	9,592.76	221,428.24	95.85
<u>CAPITAL OUTLAY</u>						
201-45110-43200 CAPITAL BUILDINGS	0	0.00	0.00	0.00	0.00	0.00
201-45110-43300 CAPITAL IMPROVEMENTS - O	34,000	0.00	0.00	0.00	34,000.00	0.00
201-45110-43400 CAPITAL EQUIPMENT	13,000	0.00	0.00	0.00	13,000.00	0.00
201-45110-43410 COMPUTER HARDWARE	0	0.00	0.00	0.00	0.00	0.00
201-45110-43421 VEHICLE	0	0.00	0.00	0.00	0.00	0.00
201-45110-43460 POOL EQUIPMENT	<u>0</u>	<u>0.00</u>	<u>0.00</u>	<u>0.00</u>	<u>0.00</u>	<u>0.00</u>
TOTAL CAPITAL OUTLAY	47,000	0.00	0.00	0.00	47,000.00	100.00
TOTAL RECREATION & AQUATICS	713,038	22,988.38	46,809.70	51,178.75	661,859.25	92.82
	=====	=====	=====	=====	=====	=====

CITY OF MITCHELL
REVENUE & EXPENSE REPORT (UNAUDITED)
AS OF: FEBRUARY 28TH, 2026

201-PARK FUND
RECREATION CENTER

DEPARTMENTAL EXPENDITURES	CURRENT BUDGET	CURRENT PERIOD	PRIOR YEAR YDT ACTUAL	CURRENT YTD ACTUAL	BUDGET BALANCE	% YTD BUDGET
<u>SALARIES</u>						
201-45140-41100 SALARIES	285,774	21,468.48	37,922.67	42,936.94	242,837.06	15.02
201-45140-41110 OVERTIME	1,000	0.00	150.55	0.00	1,000.00	0.00
201-45140-41120 PART-TIME	228,065	20,672.41	37,586.88	36,661.01	191,403.99	16.07
201-45140-41200 SOCIAL SECURITY/MEDICARE	39,328	3,149.49	5,476.22	5,936.04	33,391.96	15.09
201-45140-41300 RETIREMENT	19,161	1,502.44	2,650.36	2,908.23	16,252.77	15.18
201-45140-41500 GROUP INSURANCE	105,099	8,691.45	20,769.41	17,382.90	87,716.10	16.54
201-45140-41700 COMPENSATED ABSENCES	<u>0</u>	<u>0.00</u>	<u>12,991.21</u>	<u>0.00</u>	<u>0.00</u>	<u>0.00</u>
TOTAL SALARIES	678,427	55,484.27	117,547.30	105,825.12	572,601.88	84.40
<u>CURRENT EXPENSES</u>						
201-45140-42200 PROFESSIONAL SERVICES	0	0.00	45.00	0.00	0.00	0.00
201-45140-42210 CONTRACT LABOR	0	0.00	0.00	0.00	0.00	0.00
201-45140-42250 PROGRAMMING SERVICES	0	0.00	0.00	0.00	0.00	0.00
201-45140-42300 PUBLISHING	46,500	8,952.82	9,086.00	8,952.82	37,547.18	19.25
201-45140-42400 LEASE-EXERCISE EQUIPMENT	0	0.00	0.00	0.00	0.00	0.00
201-45140-42500 REPAIR & MAINTENANCE	37,450	566.34	6,370.06	566.34	36,883.66	1.51
201-45140-42510 REC CENTER ROOFING	0	0.00	0.00	0.00	0.00	0.00
201-45140-42600 SUPPLIES & MATERIALS	41,500	3,112.26	4,599.02	3,112.26	38,387.74	7.50
201-45140-42601 CONCESSION SUPPLIES	12,000	2,763.05	2,577.39	2,763.05	9,236.95	23.03
201-45140-42602 CHEMICALS	19,000	439.26	120.00	439.26	18,560.74	2.31
201-45140-42610 GAS & FUEL	0	0.00	0.00	0.00	0.00	0.00
201-45140-42650 UNIFORMS	1,250	232.30	0.00	232.30	1,017.70	18.58
201-45140-42700 TRAVEL, CONF & DUES	1,750	0.00	143.37	0.00	1,750.00	0.00
201-45140-42800 UTILITIES	184,921	15,813.82	12,811.81	15,935.47	168,985.53	8.62
201-45140-42920 SOFTWARE	5,000	0.00	3,646.52	4,086.54	913.46	81.73
201-45140-42950 CREDIT CARD FEES	2,300	154.12	0.00	154.12	2,145.88	6.70
201-45140-42999 REFUNDS	<u>500</u>	<u>0.00</u>	<u>0.00</u>	<u>0.00</u>	<u>500.00</u>	<u>0.00</u>
TOTAL CURRENT EXPENSES	352,171	32,033.97	39,399.17	36,242.16	315,928.84	89.71
<u>CAPITAL OUTLAY</u>						
201-45140-43200 CAPITAL BUILDINGS	0	0.00	0.00	0.00	0.00	0.00
201-45140-43300 CAPITAL IMPROVEMENTS - O	33,000	0.00	20,143.20	0.00	33,000.00	0.00
201-45140-43400 CAPITAL EQUIPMENT	<u>98,000</u>	<u>11,730.57</u>	<u>0.00</u>	<u>11,730.57</u>	<u>86,269.43</u>	<u>11.97</u>
TOTAL CAPITAL OUTLAY	131,000	11,730.57	20,143.20	11,730.57	119,269.43	91.05
TOTAL RECREATION CENTER	1,161,598	99,248.81	177,089.67	153,797.85	1,007,800.15	86.76
	=====	=====	=====	=====	=====	=====

CITY OF MITCHELL
 REVENUE & EXPENSE REPORT (UNAUDITED)
 AS OF: FEBRUARY 28TH, 2026

201-PARK FUND
 SPORTS COMPLEXES

DEPARTMENTAL EXPENDITURES	CURRENT BUDGET	CURRENT PERIOD	PRIOR YEAR YDT ACTUAL	CURRENT YTD ACTUAL	BUDGET BALANCE	% YTD BUDGET
SALARIES						
201-45160-41100 SALARIES	298,949	21,524.25	38,603.10	43,100.11	255,848.89	14.42
201-45160-41110 OVERTIME	4,000	184.75	232.04	271.93	3,728.07	6.80
201-45160-41120 PART-TIME	120,778	4,442.89	7,310.64	9,972.24	110,805.76	8.26
201-45160-41200 SOCIAL SECURITY/MEDICARE	32,416	1,967.98	3,423.36	3,973.74	28,442.26	12.26
201-45160-41300 RETIREMENT	18,177	1,302.55	2,330.12	2,602.36	15,574.64	14.32
201-45160-41500 GROUP INSURANCE	78,933	6,256.45	9,271.92	12,512.91	66,420.09	15.85
201-45160-41700 COMPENSATED ABSENCES	<u>0</u>	<u>0.00</u>	<u>0.00</u>	<u>0.00</u>	<u>0.00</u>	<u>0.00</u>
TOTAL SALARIES	553,253	35,678.87	61,171.18	72,433.29	480,819.71	86.91
CURRENT EXPENSES						
201-45160-42200 PROFESSIONAL SERVICES	1,600	0.00	0.00	0.00	1,600.00	0.00
201-45160-42500 REPAIR & MAINTENANCE	63,500	1,483.45	3,969.85	1,483.45	62,016.55	2.34
201-45160-42600 SUPPLIES & MATERIALS	49,400	2,812.60	2,239.51	4,024.02	45,375.98	8.15
201-45160-42602 CHEMICALS	22,000	0.00	0.00	0.00	22,000.00	0.00
201-45160-42603 SMALL EQUIPMENT	2,000	0.00	339.99	0.00	2,000.00	0.00
201-45160-42610 GAS & FUEL	15,000	514.32	809.25	592.32	14,407.68	3.95
201-45160-42650 UNIFORMS	1,650	294.95	56.23	294.95	1,355.05	17.88
201-45160-42700 TRAVEL, CONF & DUES	900	167.70	100.88	167.70	732.30	18.63
201-45160-42800 UTILITIES	162,320	16,145.37	15,725.17	16,212.13	146,107.87	9.99
201-45160-42950 CREDIT CARD FEES	<u>1,000</u>	<u>53.67</u>	<u>0.00</u>	<u>53.67</u>	<u>946.33</u>	<u>5.37</u>
TOTAL CURRENT EXPENSES	319,370	21,472.06	23,240.88	22,828.24	296,541.76	92.85
CAPITAL OUTLAY						
201-45160-43200 CAPITAL BUILDINGS	0	0.00	0.00	0.00	0.00	0.00
201-45160-43300 CAPITAL IMPROVEMENTS - O	1,267,000	20,520.00	0.00	20,520.00	1,246,480.00	1.62
201-45160-43310 CAPITAL IMPROV-CADWELL B	0	0.00	0.00	0.00	0.00	0.00
201-45160-43320 CAPITAL IMPROV-PRESS BOX	45,000	0.00	0.00	0.00	45,000.00	0.00
201-45160-43340 CAPITAL IMPROV-LIGHT POL	100,000	0.00	0.00	0.00	100,000.00	0.00
201-45160-43400 CAPITAL EQUIPMENT	<u>8,500</u>	<u>0.00</u>	<u>0.00</u>	<u>0.00</u>	<u>8,500.00</u>	<u>0.00</u>
TOTAL CAPITAL OUTLAY	1,420,500	20,520.00	0.00	20,520.00	1,399,980.00	98.56
TOTAL SPORTS COMPLEXES	2,293,123	77,670.93	84,412.06	115,781.53	2,177,341.47	94.95
	=====	=====	=====	=====	=====	=====

CITY OF MITCHELL
 REVENUE & EXPENSE REPORT (UNAUDITED)
 AS OF: FEBRUARY 28TH, 2026

201-PARK FUND
 CADWELL CONCESSIONS

DEPARTMENTAL EXPENDITURES	CURRENT BUDGET	CURRENT PERIOD	PRIOR YEAR YTD ACTUAL	CURRENT YTD ACTUAL	BUDGET BALANCE	% YTD BUDGET
<u>SALARIES</u>						
201-45165-41110 OVERTIME	0	0.00	0.00	0.00	0.00	0.00
201-45165-41120 PART-TIME	14,272	0.00	0.00	0.00	14,272.00	0.00
201-45165-41200 SOCIAL SECURITY/MEDICARE	<u>1,092</u>	<u>0.00</u>	<u>0.00</u>	<u>0.00</u>	<u>1,092.00</u>	<u>0.00</u>
TOTAL SALARIES	15,364	0.00	0.00	0.00	15,364.00	100.00
<u>CURRENT EXPENSES</u>						
201-45165-42500 REPAIR & MAINTENANCE	1,000	0.00	0.00	0.00	1,000.00	0.00
201-45165-42600 SUPPLIES	1,000	0.00	0.00	0.00	1,000.00	0.00
201-45165-42610 COST OF GOODS SOLD	20,000	0.00	0.00	0.00	20,000.00	0.00
201-45165-42660 MINOR EQUIPMENT	<u>500</u>	<u>0.00</u>	<u>0.00</u>	<u>0.00</u>	<u>500.00</u>	<u>0.00</u>
TOTAL CURRENT EXPENSES	22,500	0.00	0.00	0.00	22,500.00	100.00
<u>CAPITAL OUTLAY</u>						
201-45165-43300 CAPITAL IMPROVEMENTS	<u>0</u>	<u>0.00</u>	<u>0.00</u>	<u>0.00</u>	<u>0.00</u>	<u>0.00</u>
TOTAL CAPITAL OUTLAY	0	0.00	0.00	0.00	0.00	0.00
 TOTAL CADWELL CONCESSIONS	 37,864	 0.00	 0.00	 0.00	 37,864.00	 100.00
	=====	=====	=====	=====	=====	=====

CITY OF MITCHELL
REVENUE & EXPENSE REPORT (UNAUDITED)
AS OF: FEBRUARY 28TH, 2026

201-PARK FUND
PARKS

DEPARTMENTAL EXPENDITURES	CURRENT BUDGET	CURRENT PERIOD	PRIOR YEAR YTD ACTUAL	CURRENT YTD ACTUAL	BUDGET BALANCE	% YTD BUDGET
<u>SALARIES</u>						
201-45210-41100 SALARIES	408,724	30,984.27	55,687.79	61,783.79	346,940.21	15.12
201-45210-41110 OVERTIME	3,000	199.24	335.34	199.24	2,800.76	6.64
201-45210-41120 PART-TIME	118,584	0.00	0.00	0.00	118,584.00	0.00
201-45210-41200 SOCIAL SECURITY/MEDICARE	40,568	2,292.16	4,055.14	4,528.47	36,039.53	11.16
201-45210-41300 RETIREMENT	24,763	1,871.00	3,361.40	3,718.95	21,044.05	15.02
201-45210-41500 GROUP INSURANCE	142,316	10,735.04	20,592.08	21,470.07	120,845.93	15.09
201-45210-41700 COMPENSATED ABSENCES	<u>0</u>	<u>0.00</u>	<u>0.00</u>	<u>0.00</u>	<u>0.00</u>	<u>0.00</u>
TOTAL SALARIES	737,955	46,081.71	84,031.75	91,700.52	646,254.48	87.57
<u>CURRENT EXPENSES</u>						
201-45210-42200 PROFESSIONAL SERVICES	0	3,886.25	0.00	3,886.25	(3,886.25)	0.00
201-45210-42300 PUBLISHING	0	0.00	0.00	0.00	0.00	0.00
201-45210-42500 REPAIR & MAINTENANCE	62,500	4,058.07	1,099.49	4,058.07	58,441.93	6.49
201-45210-42520 VANDAL RESTITUTION REPAI	0	0.00	0.00	0.00	0.00	0.00
201-45210-42550 TESTING-LAKE MITCHELL	0	0.00	0.00	0.00	0.00	0.00
201-45210-42600 SUPPLIES & MATERIALS	72,100	4,710.64	3,142.14	5,165.56	66,934.44	7.16
201-45210-42602 CHEMICALS	6,000	0.00	0.00	0.00	6,000.00	0.00
201-45210-42604 TREES	53,000	0.00	0.00	0.00	53,000.00	0.00
201-45210-42605 COMMUNITY CHRISTMAS LIGH	0	0.00	0.00	0.00	0.00	0.00
201-45210-42610 GAS & FUEL	34,000	1,332.66	1,242.54	1,332.66	32,667.34	3.92
201-45210-42650 UNIFORMS	2,100	0.00	0.00	0.00	2,100.00	0.00
201-45210-42660 SMALL EQUIPMENT	2,000	0.00	0.00	0.00	2,000.00	0.00
201-45210-42690 CHANGE IN INVENTORY	0	0.00	0.00	0.00	0.00	0.00
201-45210-42700 TRAVEL, CONF. & DUES	1,800	31.86	101.75	31.86	1,768.14	1.77
201-45210-42800 UTILITIES	79,200	3,422.28	3,271.00	3,422.28	75,777.72	4.32
201-45210-42850 UTILITIES-VETERAN'S PARK	6,500	82.73	99.38	82.73	6,417.27	1.27
201-45210-42900 MOSQUITO PROGRAM	16,000	0.00	0.00	0.00	16,000.00	0.00
201-45210-42901 MSHA WEED SPRAYING	0	0.00	0.00	0.00	0.00	0.00
201-45210-42902 FIREWORKS CLEANUP	1,500	0.00	0.00	0.00	1,500.00	0.00
201-45210-42931 SALES TAX	<u>0</u>	<u>0.00</u>	<u>0.00</u>	<u>0.00</u>	<u>0.00</u>	<u>0.00</u>
TOTAL CURRENT EXPENSES	336,700	17,524.49	8,956.30	17,979.41	318,720.59	94.66
<u>CAPITAL OUTLAY</u>						
201-45210-43200 CAPITAL BUILDINGS	48,000	0.00	0.00	0.00	48,000.00	0.00
201-45210-43300 CAPITAL IMPROVEMENTS - O	775,813	0.00	4,978.75	0.00	775,813.00	0.00
201-45210-43400 CAPITAL EQUIPMENT	23,500	0.00	0.00	0.00	23,500.00	0.00
201-45210-43430 MOSQUITO PROGRAM CAPITAL	<u>0</u>	<u>0.00</u>	<u>0.00</u>	<u>0.00</u>	<u>0.00</u>	<u>0.00</u>
TOTAL CAPITAL OUTLAY	847,313	0.00	4,978.75	0.00	847,313.00	100.00
TOTAL PARKS	1,921,968	63,606.20	97,966.80	109,679.93	1,812,288.07	94.29
	=====	=====	=====	=====	=====	=====

CITY OF MITCHELL
REVENUE & EXPENSE REPORT (UNAUDITED)
AS OF: FEBRUARY 28TH, 2026

201-PARK FUND
SUPERVISION

DEPARTMENTAL EXPENDITURES	CURRENT BUDGET	CURRENT PERIOD	PRIOR YEAR YDT ACTUAL	CURRENT YTD ACTUAL	BUDGET BALANCE	% YTD BUDGET
<u>SALARIES</u>						
201-45220-41100 SALARIES	120,683	9,283.30	17,672.40	18,566.60	102,116.40	15.38
201-45220-41110 OVERTIME	0	0.00	0.00	0.00	0.00	0.00
201-45220-41120 PART-TIME	0	0.00	0.00	0.00	0.00	0.00
201-45220-41200 SOCIAL SECURITY/MEDICARE	9,232	685.22	1,255.72	1,352.92	7,879.08	14.65
201-45220-41300 RETIREMENT	7,241	557.00	1,060.36	1,114.00	6,127.00	15.38
201-45220-41500 GROUP INSURANCE	32,394	1,736.57	5,397.14	3,473.14	28,920.86	10.72
201-45220-41700 COMPENSATED ABSENCES	<u>0</u>	<u>0.00</u>	<u>0.00</u>	<u>0.00</u>	<u>0.00</u>	<u>0.00</u>
TOTAL SALARIES	169,550	12,262.09	25,385.62	24,506.66	145,043.34	85.55
<u>CURRENT EXPENSES</u>						
201-45220-42100 INSURANCE	140,000	23,392.00	19,237.00	23,392.00	116,608.00	16.71
201-45220-42200 PROFESSIONAL SERVICES	0	0.00	0.00	0.00	0.00	0.00
201-45220-42300 PUBLISHING	800	0.00	0.00	0.00	800.00	0.00
201-45220-42500 REPAIR & MAINTENANCE	0	0.00	0.00	0.00	0.00	0.00
201-45220-42600 SUPPLIES & MATERIALS	900	0.00	0.00	0.00	900.00	0.00
201-45220-42650 UNIFORMS	250	0.00	0.00	0.00	250.00	0.00
201-45220-42700 TRAVEL, CONF. & DUES	2,695	0.00	0.00	0.00	2,695.00	0.00
201-45220-42800 UTILITIES	640	39.73	48.56	39.88	600.12	6.23
201-45220-42920 COMPUTER SOFTWARE	<u>0</u>	<u>0.00</u>	<u>0.00</u>	<u>0.00</u>	<u>0.00</u>	<u>0.00</u>
TOTAL CURRENT EXPENSES	145,285	23,431.73	19,285.56	23,431.88	121,853.12	83.87
<u>CAPITAL OUTLAY</u>						
201-45220-43200 CAPITAL BUILDINGS	0	0.00	0.00	0.00	0.00	0.00
201-45220-43300 CAPITAL IMPROVE-OTHER	0	0.00	0.00	0.00	0.00	0.00
201-45220-43400 CAPITAL EQUIPMENT	<u>0</u>	<u>0.00</u>	<u>0.00</u>	<u>0.00</u>	<u>0.00</u>	<u>0.00</u>
TOTAL CAPITAL OUTLAY	0	0.00	0.00	0.00	0.00	0.00
TOTAL SUPERVISION	314,835	35,693.82	44,671.18	47,938.54	266,896.46	84.77
=====						
TOTAL EXPENDITURES	6,442,426	299,208.14	450,949.41	478,376.60	5,964,049.40	92.57
=====						
REVENUE OVER/ (UNDER) EXPENDITURES	(4,744,131)	(236,955.87)	(300,585.97)	(341,460.75)	(4,402,670.25)	92.80
=====						
<u>OTHER FINANCING SOURCES</u>						
201-3900 FROM GENERAL FUND	4,744,131	0.00	0.00	0.00	4,744,131.00	0.00
201-3901 FROM DEBT SERVICE-INDOOR POOL	0	0.00	0.00	0.00	0.00	0.00
201-39104 DAMAGE/LOSS REIMB-CAPIT ASSETS	0	0.00	0.00	0.00	0.00	0.00
201-39131 SALE OF CAPITAL ASSETS	0	0.00	0.00	0.00	0.00	0.00
201-3920 TRANSFER IN	<u>0</u>	<u>0.00</u>	<u>0.00</u>	<u>0.00</u>	<u>0.00</u>	<u>0.00</u>
TOTAL OTHER FINANCING SOURCES	4,744,131	0.00	0.00	0.00	4,744,131.00	100.00

CITY OF MITCHELL
 REVENUE & EXPENSE REPORT (UNAUDITED)
 AS OF: FEBRUARY 28TH, 2026

201-PARK FUND
 SUPERVISION

DEPARTMENTAL EXPENDITURES	CURRENT BUDGET	CURRENT PERIOD	PRIOR YEAR YDT ACTUAL	CURRENT YTD ACTUAL	BUDGET BALANCE	% YTD BUDGET
<u>OTHER FINANCING USES</u>						
201-49000-51100 TRAN OUT TO	<u>0</u>	<u>0.00</u>	<u>0.00</u>	<u>0.00</u>	<u>0.00</u>	<u>0.00</u>
TOTAL OTHER USES	0	0.00	0.00	0.00	0.00	0.00
<hr/>						
REVENUES & OTHER SOURCES OVER (UNDER) EXPENDITURES & OTHER (USES)	0	(236,955.87)	(300,585.97)	(341,460.75)	341,460.75	0.00

Thomas Gullede:

Rec Center: The center has been busy through the first two months of the year. We are lining up programming for the summer, and Adam and Aaron have been busy on the floor helping members. We officially start BHF on March 9th, and will run the program for 12 consecutive weeks. We are excited to offer a “first of its kind” program to Mitchell, and will have another session starting in August.

We will be re-finishing our gym floors (front and back gyms) on March 18th-22nd. We will shut down both areas for curing, and will put this project on a rotating yearly basis from now on.

Indoor Aquatics: We hosted the over 13 State swim meet with the Dakota Riptide in late February. There were over 280 swimmers, along with family members, so space was limited in the pool area and our gyms. GBR came to our aid with use of the front gym all day Friday and the commons area on the weekend. We would like to say a huge thank you to Allison and her staff for allowing this, along with a huge thank you to the Riptide for our continued partnership. Jamie held a session of swim lessons, along with our normal pool usage, and has her lifeguard training on March 21-22. This is an important time for her to establish relationships with possible summer staff at the outdoor aquatic center.

Programs: Our Coed Volleyball League recently wrapped up another great season, with teams competing hard and enjoying a fun and competitive environment throughout the league.

Currently, we are in the middle of our Men's and Women's Basketball Leagues, both of which have been going very well. Teams have been playing competitive games each week, and the season is scheduled to conclude on April 8th.

As those leagues wrap up, our focus will begin shifting toward summer programming.

Preparations will soon be underway to organize and plan the many activities and opportunities that will be available for participants during the summer months. We're looking forward to another exciting season of programs and community involvement.

Roger Prewett:

Sports Complex:

- We are working on summer schedules.
- Working on servicing and repairing the remaining equipment for the summer season.
- Trying to lock in the summer crew of field workers as well as concession's part-time workers.
- We are making plans for our summer projects.

Cadwell:

- We have started back-filling where things settled around some newer sidewalks.
- Finding ways to water the stadium while irrigation remains winterized.
- Working on leveling out fields and filling holes as time and weather allow.
- Installing new gate where the old one was damaged in an accident during inclement weather.
- Will be installing new fence cap on field C.
- Getting started on field maintenance in general.

Ice Arena:

- In cooperation with Mitchell Skating and Hockey Association, we've hosted several successful Rock & Skate events with light show and music on Sunday nights during normal open skate hours.
- The Ice Arena and MSHA hosted the Girls Varsity State Championship Hockey Tournament this past weekend.
- MSHA's regular hockey season is wrapping up for the season. We are now mainly having drop hockey, some practices, and clinics.
- Mitchell Figure Skating remains steady with their programs and practices.
- We will have the Lucky Devil's adult hockey tournament next month.

Steve Roth

Parks:

- Finished up the tree removals in the boulevards, parks and areas around the lake.
- Tree trimming for clearance above the roadways on east side of town from Main Street east and from 1st Ave going north to 7th Ave.
- Tree removals in the old trailer courts on east 1st Ave
- Cutting and splitting firewood for the Campground
- Repairs on dumpsters and repainting them
- Maintenance on equipment for the summer
- Putting up the tennis nets, high school tennis practice starts March 16th
- Playground equipment has been delivered to the park shop for Gainer Park
- Hired on campground hosts for the season, with one host couple returning from 2025.

Director Nelson:

Minor Additions to Dog Park

The troop leader for a local girl group reached out to me with some ideas that her scouts had regarding what might be good additions, that they could make or assist in making, to place within the dog park for its users and/or their pets. These proposed additions would be:

- 1) First Aid Kits (suspended from the fence on each side of the park, and their troop would keep it stocked)
- 2) Toy Boxes (also suspended from the fence on each side, which their troop would keep stocked with tennis balls)
- 3) Leash Racks (also suspended from the fence on each side, so when dog owners let their dog[s] off leash, they will have a place to park their leash[es])

Tornado Safe Room: Update

City council opted to not approve/fund the design/bid as presented at the council meeting on Monday evening, 3/2. However, at a special council meeting on Thursday morning, 3/5, council members indicated that they are willing to look at the plan again if it were come in closer to budget.

SDPRA State Conference

Planning for this year's SDPRA Fall Conference, to be hosted by our Parks and Rec staff in Mitchell this October, continues. I'm thankful to have capable, full-time, veteran staff who involved with the planning process and hosting the last time the conference was here in 2016.

Proposed Vending Shade Structure at Cadwell Stadium

The Exchange Club has proposed constructing (at their expense) a roofed structure near the vending building within the Cadwell stadium campus, just south of the stadium. Given the potential 'crowding' of the passage between the proposed structure and the stadium, city officials would like to see a portion of the stadium fence near this area moved further south toward the property line, allowing easier travel of department vehicles in this area, or relocation of the proposed structure to east of the current block vending building. There will be an action item on the agenda for this structure (or one similar at or nearby this location) and another for possible relocation of (a portion of) the nearby fence to the south up to eight feet.

Further Clearing at Corner of Indian Village Road and Ohlman

A substantial amount of clearing of buckthorn and dead/dying cedars and Siberian elms has been accomplished over the past several weeks. Hauling away the latest piles will be next, followed by drum-mulching the smaller stumps, filling of minor low spots, seeding, and then installation of a silt fence.

A plugged culvert, coming from the south side of IV Road, was also discovered in the process. That'll be jetted out in the near future, as well.

The entire stretch of Turtle Trail (from above-mentioned intersection, proceeding east toward the Day Camp) could use major work, but it would be difficult for the department (or most others) to maintain this type of uneven ground on an ongoing basis, if all of it were to be cleared of invasive buckthorn and other dead/dying/undesirable trees.

CONSULTANTS

GRAPHISOFT
A NEMETSCHEK COMPANY

Cadwell

NOTES:

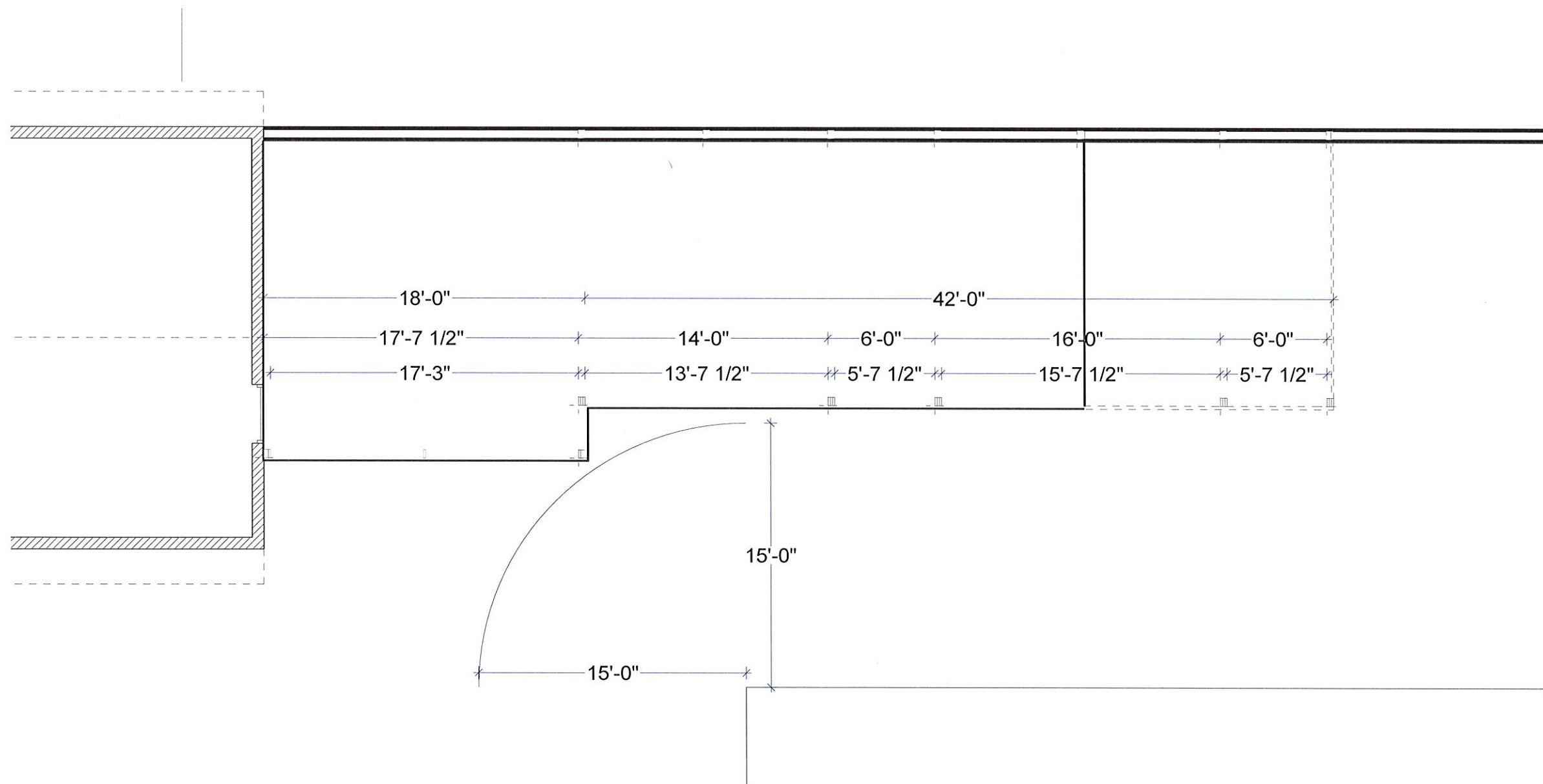
PROJECT NO: #P1n
 MODEL FILE:
 SPSS.pln
 DRAWN BY: Matthew R Fristad
 COPYRIGHT:

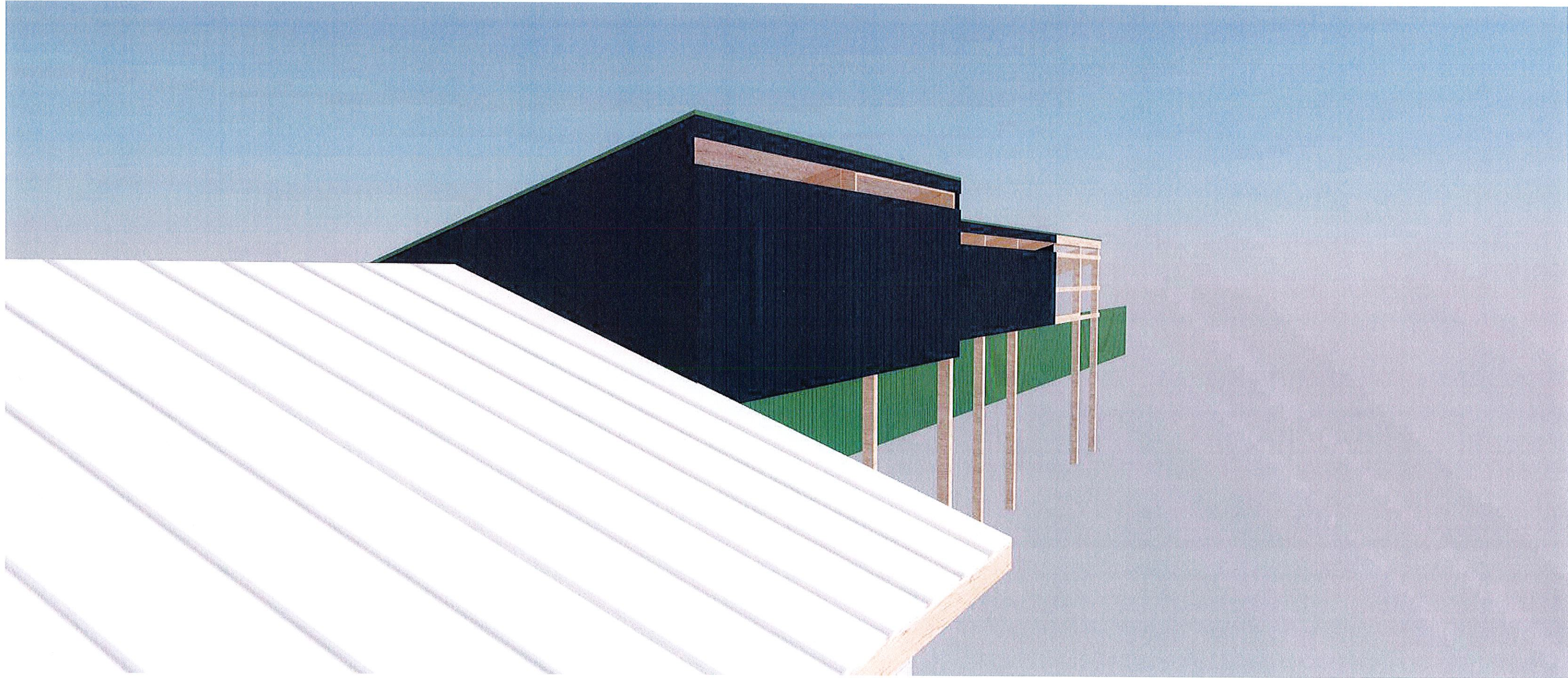
SHEET TITLE

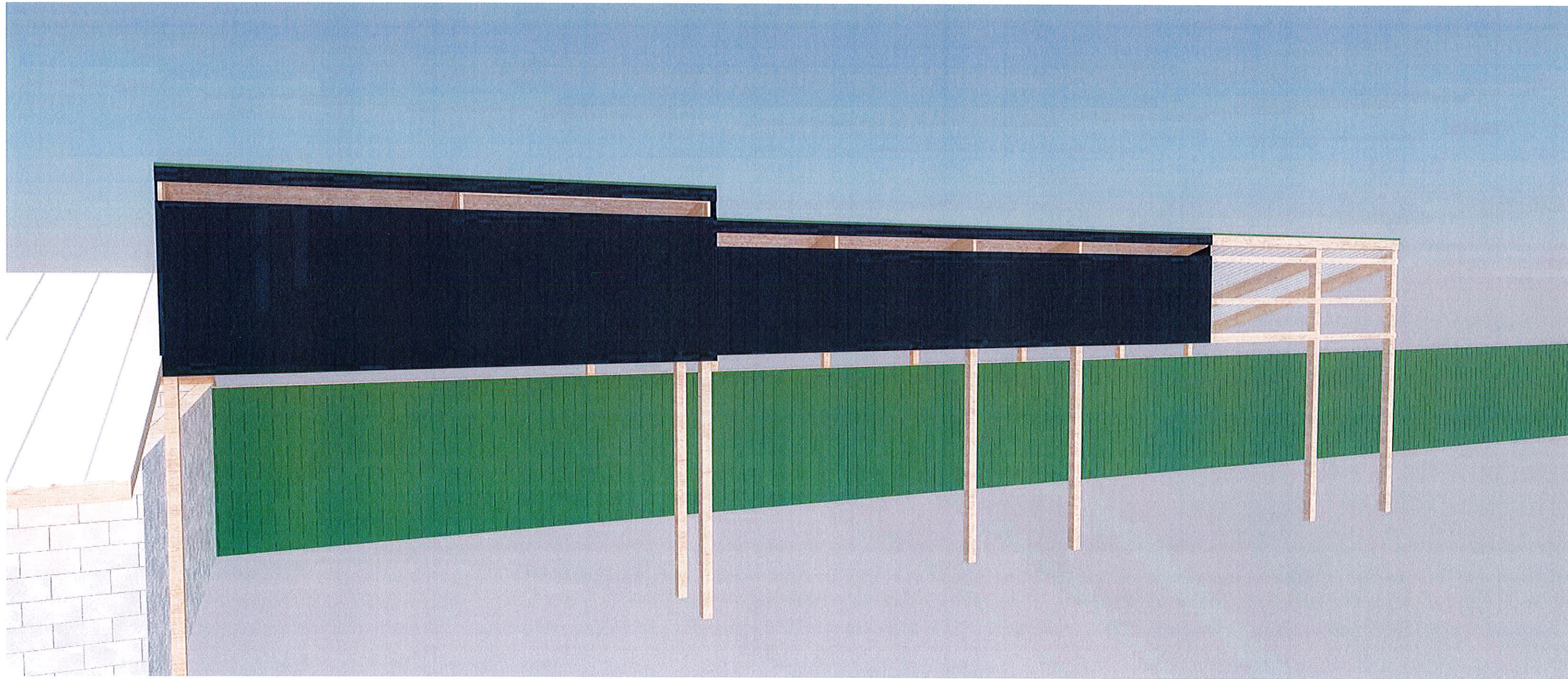
Post Layout

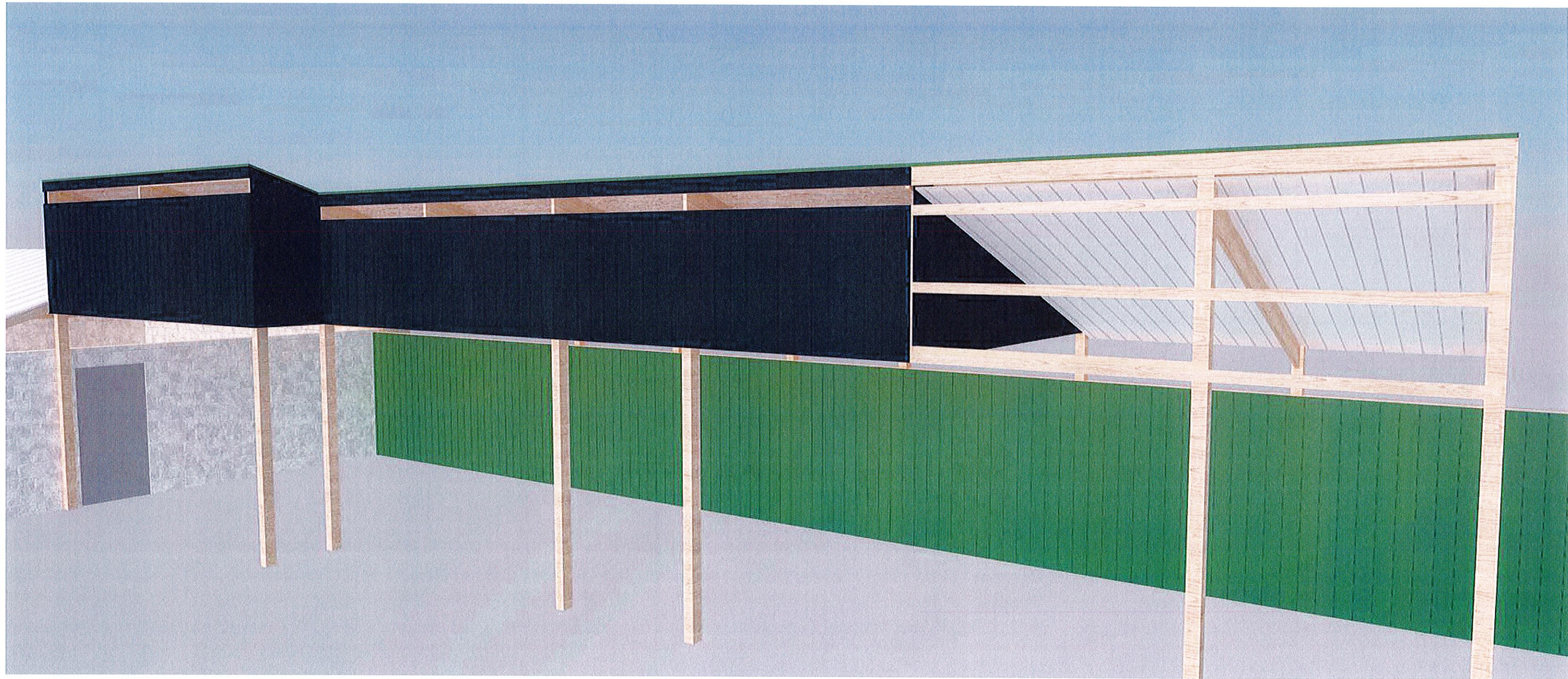
SHEET 1

OF 1





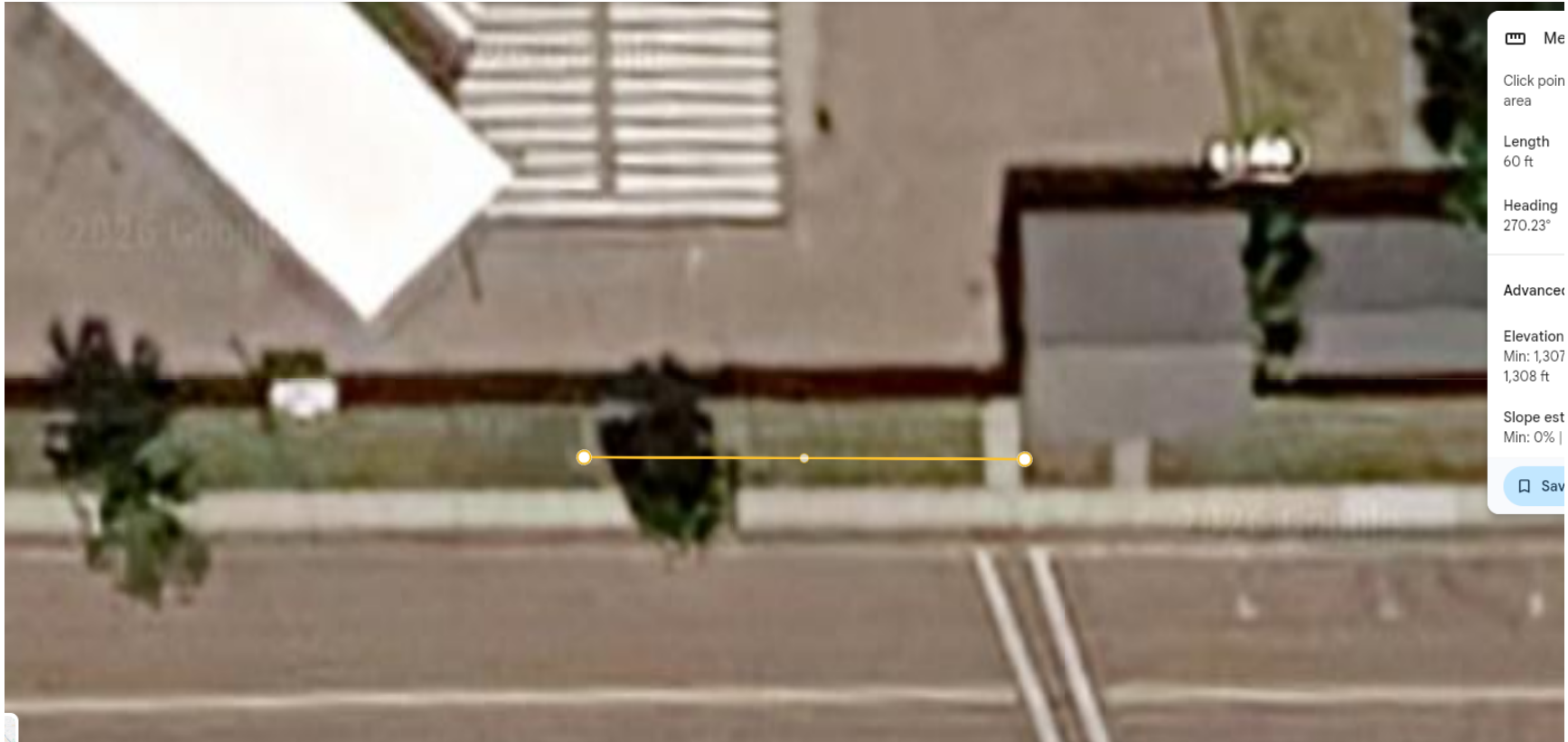




Option 2

This location has been suggested as another possibility, provided that it would not conflict with the intentions, purpose, or donors of the current open shelter directly to the west of it.





**FACILITY USE AGREEMENT 2026
CITY OF MITCHELL**

This agreement (“Agreement”) entered into this _____ day of March, 2026 between the City of Mitchell a municipal corporation, by and through its Park and Recreation Board, (the “City”) and the Tennis Association, a non-profit corporation (“Athletic Club”), as follows:

WITNESSETH

1. Subject to the terms, provisions and mutual obligations of the parties as provided in this agreement, the City shall allow the Athletic Club the use of the Tennis Courts (the “Facility”), including access to the Tennis Courts, restrooms and all pertinent property for parking purposes for the program purposes of the Athletic Club for the duration of the 2026 Seasonal Use Period (“Seasonal Use Period” shall be March 1, 2026 through February 28, 2027). This Agreement shall automatically renew on a year to year basis unless a party hereto intending to terminate this agreement gives notice to the other party, on or before thirty (30) days prior to the commencement of the next Seasonal Use Period, that it does not intend to renew the agreement. Each such renewal shall be upon the same terms and conditions as set forth in this agreement unless amended in writing by mutual agreement of the parties. Fees shall be subject to modification by the Parks and Recreation Board and/or Mitchell City Council during the Off Season at least thirty (30) days prior to the commencement of the next Seasonal Use Period.
2. Athletic Club agrees to pay to the City as rent for use of the Facility the Tennis Courts of Fifteen Dollars (\$15.00) per athlete. Billing and payment shall be made in lump sum at the end of the season.
3. Athletic Club agrees to abide by all rules and guidelines in the Sports Complex policy manual. Repeated violations shall be grounds for termination of this agreement.
4. The City shall retain the final management and control authority in respect to the Facility. Athletic Club shall have no management or control authority in respect to the Facility except as permitted by the City.
5. The City shall provide and/or perform the following functions within the Facility:

- a. Oversee and coordinate the scheduling of the Facility and maintain a master schedule regarding the use of the Facility.
6. During the term of each Seasonal Use Period, or any time the Athletic Club shall use the Facility, Athletic Club shall have in force the following insurances:
 - a. Comprehensive general liability insurance, including products, bodily injury and property damage with combined single limits of \$1,000,000 for each occurrence. Insurance policies required by this paragraph shall name Athletic Club as insured and the City of Mitchell as an additional insured.
 - b. A copy of additional insured endorsements required hereunder shall be delivered to the City prior to any use of the Facility by Athletic Club. Such policies or certifications shall provide that the insurance coverage may not be cancelled or materially changed unless thirty (30) days advance notice is given to the City.
 - c. The Athletic Club shall be responsible for insuring any of its personal property that is stored in the building and stores such personal property in the building at its sole risk. Athletic Club agrees to indemnify and hold harmless the City from any and all liability arising from the use of the Facility for programs carried on by the Athletic Club. Such agreement to indemnify and hold harmless does not include any sports program that the City would sponsor and supervise, or which may be operated within the Facility by any person or entity other than the Athletic Club.
 - d. The parties shall reassess insurance needs at least once per contract year to determine whether or not the coverage required by this agreement is adequate.
7. For activities within the Facility sponsored solely by the Athletic Club, all revenue generated in connection with the activity shall be retained by the Athletic Club.
 - a. Athletic Club shall meet with the Hitchcock Park Manager prior to each season to discuss the previous season and goals for the upcoming season. Athletic Club will file an annual revenue and expense statement of gross receipts generated as a result of programs offered at Hitchcock.

These records shall be provided to the City no later than March 15th of the following year. The City shall have the right to examine any books, records, documents, and papers related to this Agreement, including State and Federal tax records.

8. Revenue generated by the City for the letting of the Facility to persons or parties other than the Athletic Club at any time while this agreement is in effect shall be retained by the City. Athletic Club shall have no authority to rent the Facility to other parties.
 - a. Revenues generated by Athletic Club as a result of selling advertising panels which are affixed to the Facility shall be retained by the Athletic Club. The placement and size of advertising panels within the Facility building must be approved by the City prior to sale and placement. Cost of panel sales will be addressed in an advertisement plan approved by the City.
 - b. Per previous agreement with the Park and Recreation Board, Athletic Club shall have no advertisement regarding specific alcoholic beverages or tobacco products, via signage sponsorship. City retains a general right to reject content it deems inappropriate for its Facility.
9. The Athletic Club agrees to use the Facility in a responsible manner for the purpose of conducting youth and recreational tennis programs in cooperation with the City, and shall not allow the Facility to be misused.
 - a. Food serving or preparation areas must be approved by the city prior to all events.
 - b. Concession Operator shall be subject to any exclusive product supplier agreements to which the City is a party. If no such agreement is in effect at the start of the Term, Concession Operator may utilize whichever product supplier it deems appropriate during that Term only. In either event, Concession Operator shall maintain its right to retain all profits from sales.
 - c. Observe and comply with all State and Federal laws and City Ordinances applying to the operation of said concession stands. Food handler requirements must be met.
 - d. The Athletic Club shall, on an annual basis, prior to or on December 31 of each year, reimburse or pay all non-insured expenses for repair or replacement to the Facility, courts, and any other City items or

equipment, arising from Athletic Club's use of the Facility during the Seasonal Use Period or Off Season, normal wear and tear excepted. The City shall be responsible for structural and equipment repair and maintenance for the Facility.

10. Nothing in this Agreement shall limit Athletic Club from cooperating with the City in caring for, maintaining, supervising, and/or constructing improvements, in the furtherance of this Agreement. Athletic Club shall make no alteration, addition, or improvement to the Facility without the advance consent and approval of the City.

- a. The parties acknowledge that any permanent improvements to be placed on the Facility premises shall have prior approval from the City and shall meet all applicable City codes and ordinances, including any planning and development requirements of City for such improvements. Athletic Club will be responsible for obtaining all necessary permits and approvals and for providing any required paper work, fees and/or exhibits required to obtain the permits or approvals or to otherwise complete the planning and development review process. Any construction of buildings or any other improvements at or on the Facility premises shall be in conformity with the regulatory codes of the City and subject to the written approval of the Parks and Recreation Director or his designee prior to issuance of building permits for construction.

All improvements to the Facility premises, upon completion of construction, shall be deemed to be the sole property of the City.

11. The Athletic Club shall not allow any lien to be placed against said improvements or the complex in general for any unpaid labor or materials and agrees to indemnify the City for any amounts of said liens and to hold the City harmless from any of Athletic Club's improvement expenses arising from this Agreement.
12. The City and Athletic Club shall make good faith efforts to accommodate the needs of each respective entity in order to maximize the overall use of the Facility. City and Athletic Club shall each designate a contact person to coordinate use of the facility.

13. This Agreement constitutes the entire agreement between the parties and shall not be modified unless mutually agreed by the City Park and Recreation Board and the Athletic Club in writing.
14. The Athletic Club shall have no right to assign any of the rights or benefits under this Agreement without prior written consent of the City.
15. Athletic Club agrees to engage in useful communication with the City and other User Groups to coordinate schedules and share use of the facilities.
16. If any section, or portion thereof, of this Agreement is found to be void, unenforceable, or unconstitutional, the improper portion shall be severed and the remaining provisions will remain in full force and effect to the maximum extent permitted by law.

IN WITNESS WHEREOF, the parties have executed this Agreement as of the day and year first written above.

Approved and adopted by the Park & Recreation Board of the City of Mitchell, South Dakota, this _____ day of March 2026.

CITY OF MITCHELL, SOUTH DAKOTA
PARK AND RECREATION BOARD

By: _____
Title: Board President

Approved and adopted by the Mitchell Tennis Association, this _____ day of March, 2026.

MITCHELL Tennis ASSOCIATION

By: _____
Title: President